

ZOOMLION ALL TERRAIN CRANE ZAT1600H853



ZOOMLION

Zoomlion Heavy Industry Science & Technology Co.,Ltd.

Add: No.677, Lugu Road, Zoomlion Industrial Park, Changsha, Hunan, China, 410205

Copyright©2024 Zoomlion. All rights reserved. Reproduction and copying of any part of contents is not allowed for any purposes without Zoomlion's approval.



Product specifications are subject to change without notice and obligation. The photographs and/or drawing in this document are for illustrative purposes only. Please consult your local ZOOMLION dealer for more information.
website:en.zoomlion.com 2024.03.06

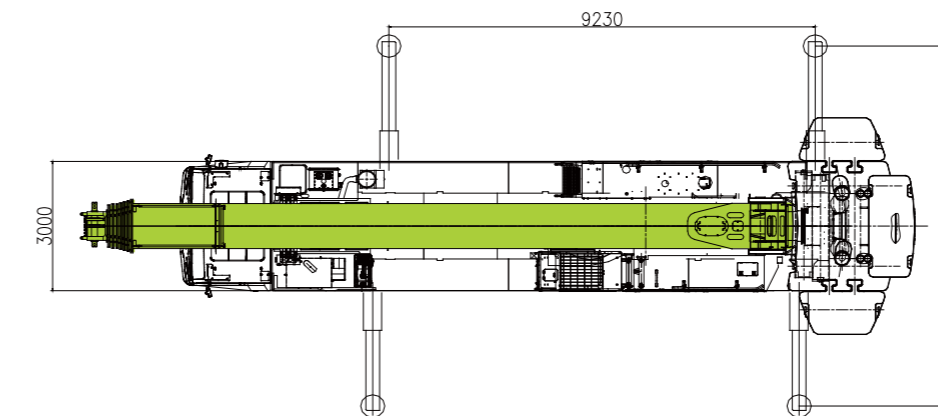
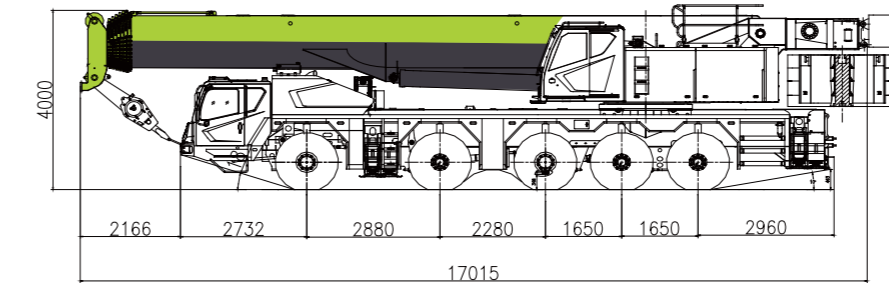
ZOOMLION

4.0
PRODUCTS

CONTENTS

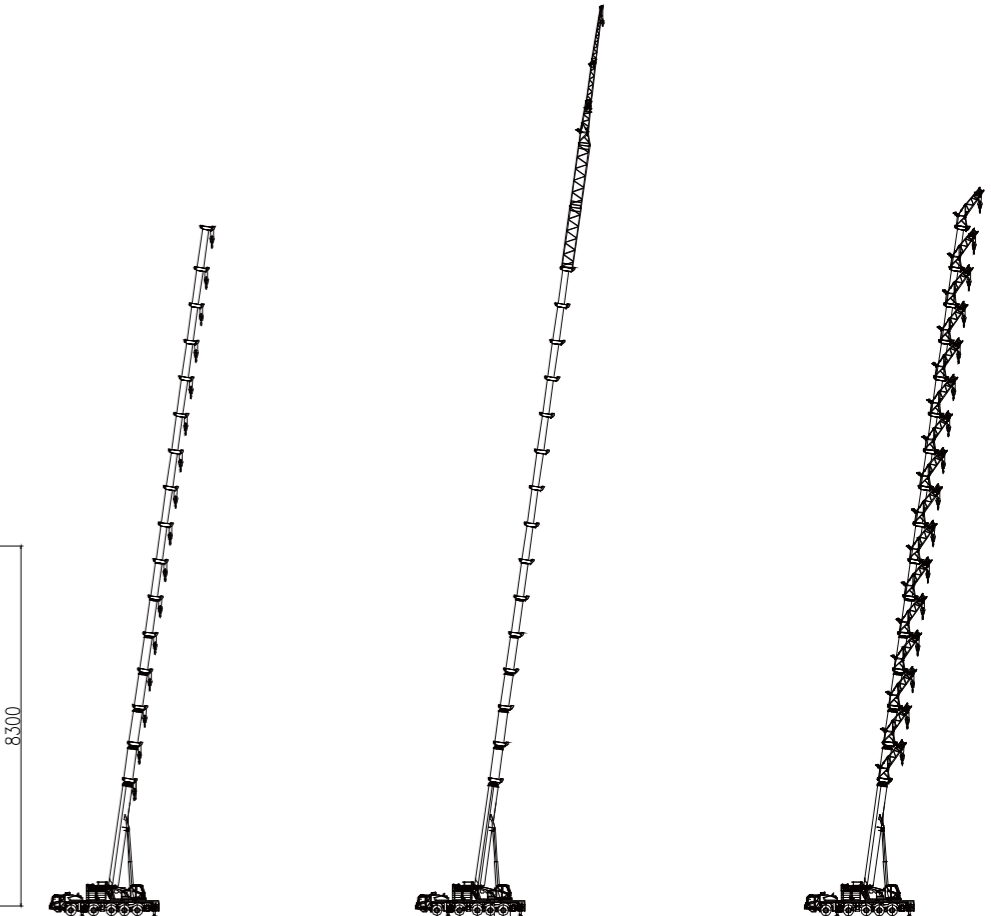
- DIMENSIONS 2
- MAIN BOOM +JIB 2
- WEIGHT 3
- LIFTING HEIGHT CURVE/LIFTING CAPACITY TABLES 4-9
- TECHNICAL SPECIFICATIONS 10
- MAIN TECHNICAL PARAMETERS 10

DIMENSIONS



MAIN BOOM +JIB

Working Condition	Boom/Jib Length
Main boom	14.4 ~ 88.0m
Main boom+Jib section 1	Main boom(88.0m) Jib section 1(10.4m)
Main boom+Jib section 2	Main boom(88.0m) Jib section 2(17.5m)



WEIGHT

Axle	1	2	3	4	5	Total weight
T	12	12	12.6	12.6	12.6	61.8

Hook Detailed Description

Specification	Weight (t)	Transport dimensions (mm)	Fall	Single/double hook	Standard/optional configuration
110t	1.28	1835×805×650	14	Double	Optional
90t	1.05	1665×650×755	14	Double	Optional
70t	0.92	1580×650×700	10	Double	Optional
70t	0.9	1675×650×580	10	Single	Optional
60t	0.75	460×650×1580	8	Double	Standard
25t	0.58	1410×650×390	3	Single	Optional
8t	0.38	Φ 405×845	1	Auxiliary hook	Standard

Working Speeds

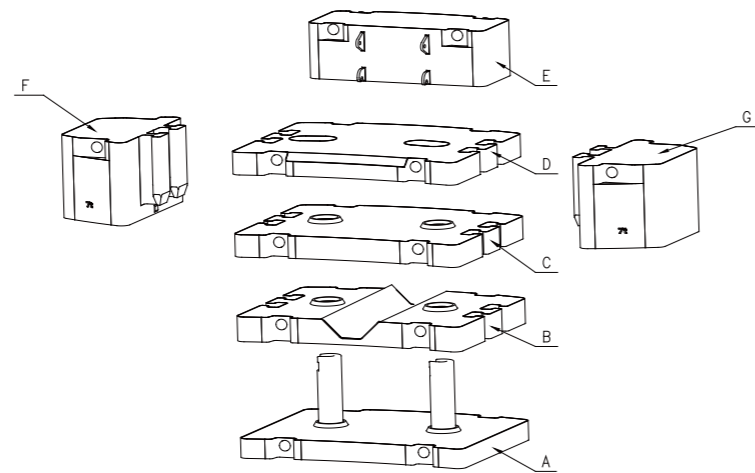
385/95R25	80 km/h MAX.	45	12/R2

Drive	Operation Speed	Rope diameter/length	Max. single line pull
	135m/min	Φ 20 mm/360m	9000Kg
	135m/min	Φ 20mm/220m	9000Kg
Swing	0 1.6r/min		
Derricking	70/s		
Telescoping	880/s		

Counterweight

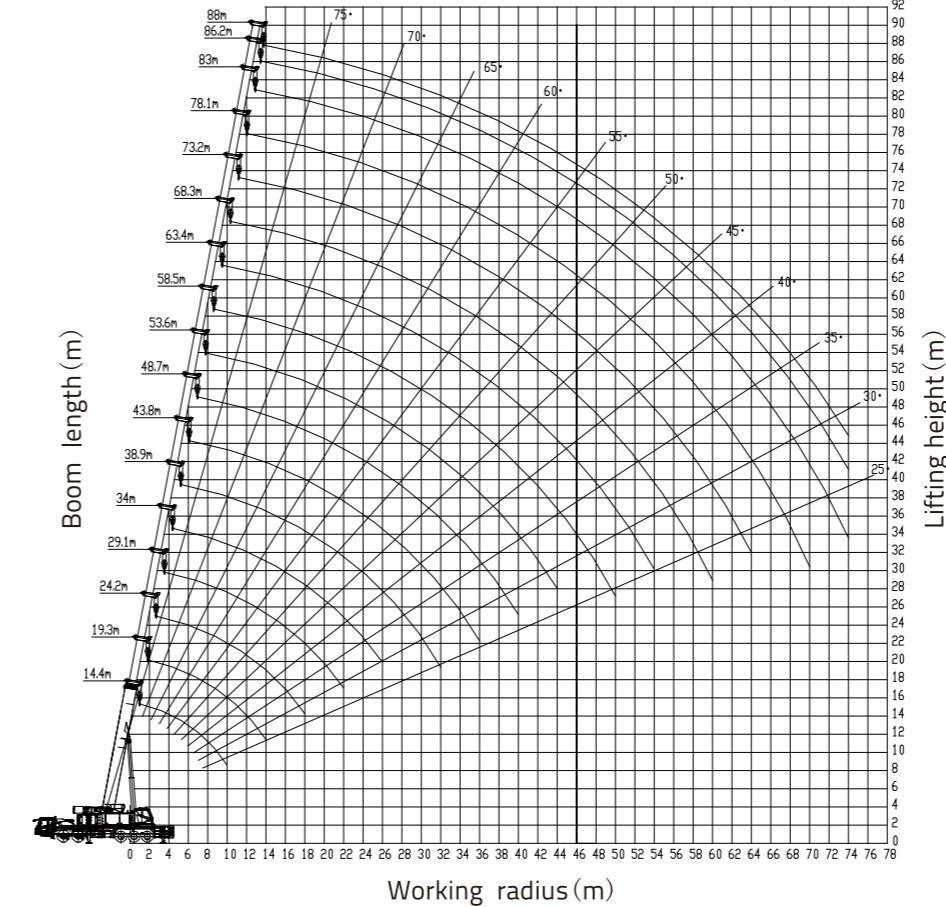
	Description	Mass (t)	Transport dimensions (mm)	Quantity(piece)
A	Lower counterweight	9	3100x2450x2100	1
B	Intermediate counterweight	9	3100x2450x500	1
C	Intermediate counterweight	9	3100x2450x500	1
D	Upper counterweight	9	3100x2450x400	1
E	Fixed counterweight	9	1200x2400x840	1
F	Side counterweight	7	1400x2100x1200	1
G	Side counterweight	7	1400x2100x1200	1

Combinations	A	B	C	D	E	F	G
0t	0	0	0	0	0	0	0
9t	0	0	0	0	1	0	0
18t	1	0	0	0	1	0	0
27t	1	1	0	0	1	0	0
36t	1	1	1	0	1	0	0
45t	1	1	1	1	1	0	0
50t	1	1	1	1	0	1	1
59t	1	1	1	1	1	1	1



LIFTING HEIGHT CURVE

Main boom OM: 14.4m–88m



LIFTING CAPACITY TABLES

Unit: t

Outriggers completely extended 8.3 m, with 59 t counterweight, counterweight moved backwards, over full range

Working Radius (m)	Boom length (m)																		
	14.4*	19.3	19.3	19.3	19.3	19.3	19.3*	24.2	24.2	24.2	24.2	24.2	24.2	24.2*					
3.0	160*	48.5	55	72	75	95	110												
3.5	118	46	55	72	75	95	105	23	46	62	70	75	90	90					
4.0	107	43.5	55	72	75	95	103	22	44	58	67	72	84	85					
4.5	102	41.7	55	72	75	93	97	21	41	55	64	70	79	80					
5.0	96	39.5	55	70	75	90	91	20	39	52	60	67	73	76					
6.0	85	36.5	49	63	73	78	81	17.5	34	45	53	60	65	70					
7.0	75	33.5	44.5	57.5	67	68	71	16	31	41	47	62	62	64					
8.0	63	31.5	40.5	53	60	61	62	14.8	28.5	38	44	58	59	61.5					
9.0	56	29.5	37.5	48.5	55	56	56	13.7	26.2	35	40	56.5	56	55.5					
10.0	50	27.5	34	45	51	52	51	12.8	24.5	32.5	37	52	51.5	51					
12.0		24.5	30	38	42	45.5	45	10.9	20.5	27.5	31	45	44.5	44					
14.0		22.5	26.5	35.5	37	37.5	37	10	18.5	24	27.5	37	36.5	36.2					
16.0								9	16.5	22	25	32	31	30					
18.0								8.2	15	20	23.2	27.5	26.5	25.7					
20.0																			
22.0																			
24.0																			
26.0																			
28.0																			
30.0																			
32.0																			
34.0																			
36.0																			
38.0																			
40.0																			
42.0																			
44.0																			
46.0																			
48.0																			
50.0																			
52.0																			
54.0																			
56.0																			
58.0																			
60.0																			
62.0																			
64.0																			
66.0																			
68.0																			
70.0																			
Reeving Hook	14	13						110t						13					
Telescoping mode	I	1	1	1	1	1	1	1	1	1	1	1	1	1	1	2			
	II	1	1	1	1	1	1	1	2	1	1	1	1	1	1	2			
	III	1	1	1	1	1	2	1	1	1	1	1	2	2	1	1			
	IV	1	1	1	1	2	1	1	1	1	1	1	2	2	1	1			
	V	1	1	1	2	1	1	1	1	1	1	2	2	1	1	1			
	VI	1	1	2	1	1	1	1	1	1	2	2	1	1	1	1			
	VII	1	2	1	1	1	1	1	3	2	1	1	1	1	1	1			

Note:
As for the lifting capacity marked with asterisk (*), the operator should use 120 t - 160 t hook and increase the reevings during lifting operation.

LIFTING CAPACITY TABLES

Unit: t

Outriggers completely extended 8.3 m, with 59 t counterweight, counterweight moved backwards, over full range															
Working Radius (m)	Boom length (m)														
	29.1	29.1	29.1	29.1	29.1	29.1	29.1*	34	34	34	34	34	34	34*	
3.0															
3.5															
4.0															
4.5	22	19	45	53	68	80	82								
5.0	21	18.2	43	51.5	65	78	80								
6.0	19.3	16.2	38	45.5	60	70	72	13.5	17.5	27	40.5	50	65	68	
7.0	18.2	14.5	35	41	55	63	65	12.2	16.1	25	37	46	60	63	
8.0	17	13.1	32	37.5	49	60	60	11.2	14.8	23	34	42	55	58	
9.0	15.7	12.1	30	34.5	46.5	54	54	10.3	13.7	21	31.5	39	51	53	
10.0	14.7	11.2	27.6	32	43	50	50.5	9.6	12.5	19.6	29	36.5	47	50	
12.0	12.7	9.6	24	27	37	43	43.5	8	10.8	16.8	24.5	30.8	39	43	
14.0	11.4	8.3	21	24	33	37	36	7.1	9.6	14.9	22	28.5	36	36	
16.0	10.5	7.4	18.6	21.5	29.5	31.5	30.5	6.3	8.5	13	19.5	25.5	31	30.5	
18.0	9.6	6.6	17	19.5	26.6	28	26.5	5.7	7.7	11.8	17.7	23	27	26.5	
20.0	8.8	6	15.4	17.6	23.1	23.5	22.5	5.1	7.1	10.7	16	21	24	23	
22.0	8.1	5.4	14.2	16.2	21.5	20	19	4.6	6.4	9.9	14.7	19	21	20	
24.0								4.2	5.9	9.1	13.6	18	18	17.1	
26.0								3.8	5.4	8.4	12.5	16.5	16	14.7	
28.0															
30.0															
32.0															
34.0															
36.0															
38.0															
40.0															
42.0															
44.0															
46.0															
48.0															
50.0															
52.0															
54.0															
56.0															
58.0															
60.0															
62.0															
64.0															
66.0															
68.0															
70.0															
Reeving Hook	11							9							
Telescoping mode	I	1	1	1	1	1	2	2	1	1	1	1	1	2	2
	II	1	1	1	1	1	2	2	1	1	1	1	1	2	2
	III	1	1	1	1	2	2	2	1	1	1	1	2	2	2
	IV	1	1	1	2	2	2	1	1	1	2	2	2	2	2
	V	1	1	2	2	2	1	1	1	2	3	2	2	2	1
	VI	2	3	2	2	1	1	1	3	3	2	2	2	1	1
	VII	3	2	2	1	1	1	1	3	2	2	2	1	1	1

LIFTING CAPACITY TABLES

Unit: t

Outriggers completely extended 8.3 m, with 59 t counterweight, counterweight moved backwards, over full range															
Working Radius (m)	Boom length (m)														
	38.9	38.9	38.9	38.9	38.9	38.9	38.9*	43.8	43.8	43.8	43.8	43.8	43.8	43.8*	
3.0															
3.5															
4.0															
4.5															
5.0															
6.0															
7.0	13.4	17.3	19	24	40	51	60								
8.0	12.3	16.1	17.5	22.3	37.2	47.5	57								
9.0	11.5	14.9	16.1	20.6	34.5	44	53	12	14.7	17.5	22.1	27.5	38	48	
10.0	10.7	13.8	14.9	19	32.5	41.5	50	11.5	13.7	16.2	20.7	25.8	36	45.5	
12.0	9.1	12	12.7	16.2	27.5	35	41	9.9	11.5	14	17.6	22.3	31.7	40	
14.0	8	10.8	11.2	14.2	25	32	37	8.8	10	12.5	15.7	19.5	28.2	36	
16.0	7.1	9.7	10	12.5	22.5	28.5	32	7.9	9	11	13.8	17.3	25.3	33	
18.0	6.4	8.8	9	11.3	20.2	26.2	27.8	7.2	8	10	12.5	15.5	23.1	28.5	
20.0	5.9	8	8	10.2	18.5	24.1	24.2	6.6	7.3	9	11.3	14	21	24.8	
22.0	5.3	7.2	7.3	9.3	16.8	21	21	6	6.6	8.2	10.2	12.8	19.2	21.5	
24.0	4.9	6.8	6.7	8.5	15.5	19	18	5.6	6	7.6	9.4	11.7	18	19	
26.0	4.6	6.3	6.1	7.8	14.5	17	15.8	5.2	5.5	6.9	8.6	10.7	16.7	16.3	
28.0	4.2	5.9	5.6	7.2	13.6	15	13.5	4.8	5	6.4	7.9	9.9	15.3	14.5	
30.0	3.9	5.5	5.1	6.6	12.7	13.4	12	4.5	4.6	5.9	7.3	9.2	14	12.7	
32.0	3.6	5.1	4.7	6	12	11.8	10.5	4.2	4.3	5.5	6.8	7.6	12.5	11.3	
34.0								3.9	3.9	5	6.3	8	11.2	10	
36.0								3.6	3.6	4.7	5.9	7.5	10	9	
38.0															
40.0															
42.0															
44.0															
46.0															
48.0															
50.0															
52.0															
54.0															
56.0															
58.0															
60.0															
62.0															
64.0															
66.0															
68.0															
70.0															
Reeving Hook	8							6							
Telescoping mode	I	1	1	1	1	1	2	1	1	1	1	1	1	2	2
	II	1	1	1	1	1	2	2	1	1	1	1	1	2	2
	III	1	1	1	1	2	2	2	1	1	1	2	3	2	2
	IV	1	1	2	3	2	2	2	1	2	3	3	2	2	2
	V	2	3	3	2	2	2	2	3	3	3	2	2	2	2
	VI	3	3	2	2	2	2	1	3	3	2	2	2	2	2
	VII	3	2	2	2	2	1	1	3	2	2	2	2	2	1

Unit: t

Outriggers completely extended 8.3 m, with 59 t counterweight, counterweight moved backwards, over full range														
Working Radius (m)	Boom length (m)													
	48.7	48.7	48.7	48.7	48.7	48.7	48.7*	53.6	53.6	53.6	53.6	53.6	53.6	53.6*
3.0														
3.5														
4.0														
4.5														
5.0														
6.0														
7.0														
8.0														
9.0														
10.0	12.2	14.7	17.5	22	26.3	27	39							
12.0	10.7	12.5	15	19.2	22.8	23.5	35.2	11	13.2	15.8	20.5	21.5	25	30
14.0	9.6	11.2	13.3	17	20	21	32.5	10	12	14.3	18.6	19.3	22	26.5
16.0	8.7	10	12	15.1	17.6	18.5	29.5	9.2	10.9	13	16.8	17	20	23.7
18.0	7.7	9	11	13.7	16	16.5	26.8	8.3	9.7	11.8	15	15.3	18	21.4
20.0	6.9	8.1	10	12.5	14.3	14.8	24.3	7.6	8.9	10.8	13.6	14	16.5	19.5
22.0	6.3	7.3	9.1	11.4	13	13.5	22.3	7	8.2	10	12.5	12.6	14.9	17.5
24.0	5.8	6.8	8.5	10.5	11.7	12.3	20	6.4	7.5	9.3	11.3	11.5	13.6	16
26.0	5.3	6.3	7.9	9.7	10.9	11.2	17.5	5.9	6.9	8.6	10.4	10.5	12.4	14.5
28.0	4.8	5.8	7.3	9	10	10.3	15.5	5.4	6.4	8	9.5	9.6	11.3	13.3
30.0	4.4	5.3	6.8	8.3	9.4	9.4	13.7	5	5.9	7.5	8.7	8.7	10.4	12.1
32.0	4.1	4.9	6.3	7.7	8.7	8.7	12.2	4.6	5.5	7	8.1	8	9.6	11.2
34.0	3.8	4.6	5.8	7.2	7.9	7.5	10.9	4.3	5.2	6.5	7.5	7.4	8.9	10.3
36.0	3.5	4.3	5.3	6.7	7.4	7	9.8	4	4.8	6.1	6.9	6.8	8.3	9.5
38.0	3.2	4	4.9	6.3	6.9	6.4	8.8	3.7	4.5	5.7	6.4	6.3	7.9	8.3
40.0	3	3.7	4.7	5.8	6.4	6	8	3.4	4.2	5.4	5.9	5.8	7.4	7.4
42.0								3.3						

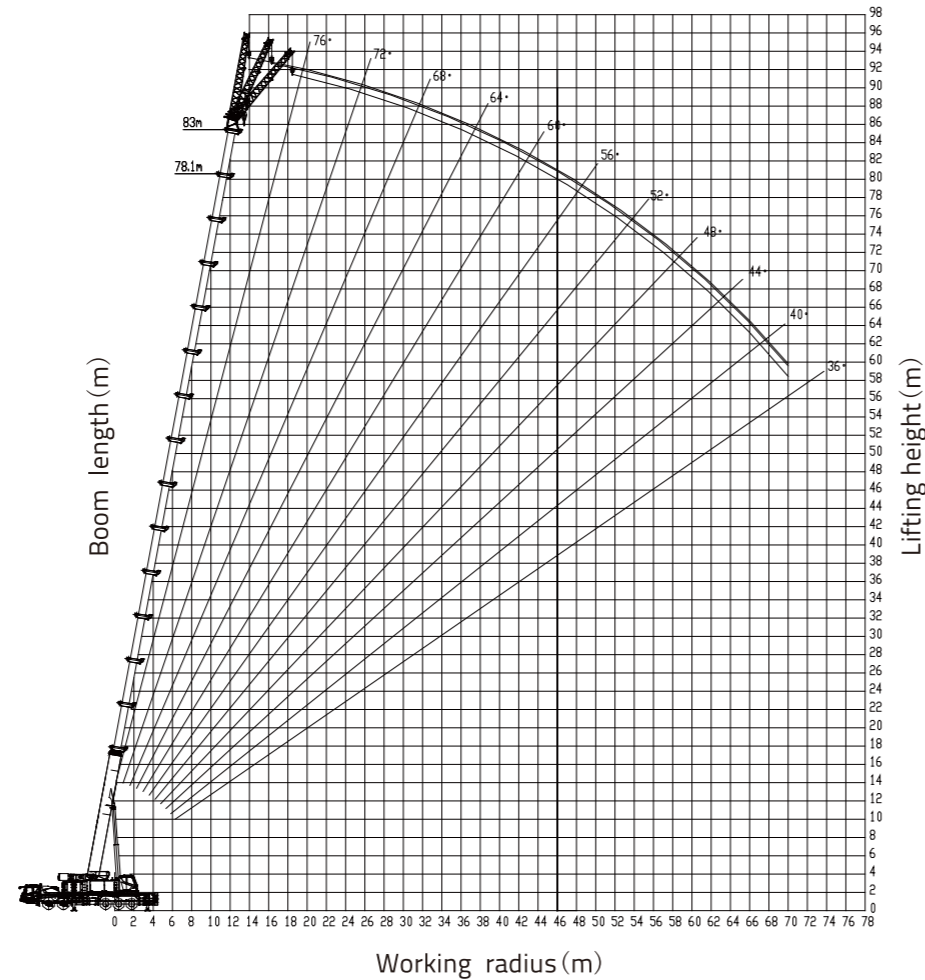
LIFTING CAPACITY TABLES

Outriggers completely extended 8.3 m, with 59 t counterweight, counterweight moved backwards, over full range

Working Radius (m)	Boom length (m)												
	68.3	68.3	68.3	68.3*	73.2	73.2	73.2*	78.1	78.1*	83*	86.2*	88*	
3.0													
3.5													
4.0													
4.5													
5.0													
6.0													
7.0													
8.0													
9.0													
10.0													
12.0													
14.0													
16.0	10.5	13	14.5	15.5									
18.0	9.9	12.2	14	15	10	10.8	11.5						
20.0	9.3	11.3	13.5	14.5	9.7	10.5	11.2	8.2	9				
22.0	8.7	10.6	12.6	13.6	9.2	10.1	10.8	8	8.7	7.1			
24.0	8.2	9.8	11.5	12.5	8.7	9.7	10.4	7.8	8.4	7	6	5.7	
26.0	7.6	9.2	10.6	11.5	8.2	9.3	10	7.6	8.2	6.8	5.8	5.6	
28.0	7	8.6	9.7	10.8	7.8	8.9	9.6	7.4	8	6.6	5.7	5.5	
30.0	6.6	7.9	8.9	10	7.3	8.5	9.2	7.2	7.8	6.4	5.6	5.4	
32.0	6.2	7.3	8.3	9.3	6.9	8	8.6	7	7.5	6.2	5.5	5.3	
34.0	5.8	6.7	7.7	8.6	6.5	7.4	8	6.8	7.2	6	5.4	5.2	
36.0	5.5	6.2	7	8	6.1	6.8	7.4	6.5	6.9	5.9	5.3	5.1	
38.0	5.2	5.7	6.5	7.4	5.6	6.3	6.9	6.1	6.5	5.7	5.2	5	
40.0	4.9	5.3	6	6.8	5.2	5.8	6.4	5.7	6.1	5.6	5.1	4.9	
42.0	4.6	4.9	5.6	6.3	4.8	5.4	5.8	5.2	5.6	5.4	4.9	4.7	
44.0	4.4	4.5	5.1	5.8	4.5	5	5.4	4.8	5.2	5.2	4.8	4.6	
46.0	4.2	4.2	4.8	5.3	4.1	4.6	5	4.5	4.8	4.9	4.5	4.3	
48.0	4	3.8	4.5	4.8	3.8	4.3	4.7	4.1	4.4	4.6	4.3	4.1	
50.0	3.8	3.6	4.3	4.3	3.6	4	4.3	3.9	4.1	4.3	4.1	3.9	
52.0	3.6	3.3	4	3.8	3.3	3.7	3.9	3.7	3.8	4	3.9	3.7	
54.0	3.3	3	3.6	3.3	3	3.4	3.5	3.4	3.5	3.7	3.6	3.4	
56.0	3.1	2.8	3.4	2.9	2.8	3.1	3.1	3.2	3.2	3.5	3.4	3.2	
58.0	2.9	2.6	3.1	2.4	2.6	2.9	2.7	3	2.9	3.2	3.1	3	
60.0	2.6	2.4	2.8	2.1	2.4	2.7	2.3	2.8	2.7	3	2.9	2.8	
62.0					2.3	2.5	1.9	2.6	2.4	2.7	2.7	2.6	
64.0					2	2.3	1.5	2.4	2	2.5	2.5	2.4	
66.0								2.2	1.7	2.3	2.3	2.2	
68.0								2	1.4	1.9	2	1.9	
70.0								1.7	1.1	1.6	1.8	1.7	
72.0										1.3	1.6	1.4	
74.0										1	1.2	1.1	
Reeving		3			3			2	2	2	2	2	
Hook						25t							
Telescoping mode	I	1	1	2	3	1	2	3	2	3	3	3	4
	II	2	3	3	3	3	3	3	3	3	3	3	4
	III	3	3	3	3	3	3	3	3	3	3	4	4
	IV	3	3	3	3	3	3	3	3	3	3	4	4
	V	3	3	3	2	3	3	3	3	3	3	4	4
	VI	3	3	2	2	3	3	2	3	3	3	4	4
	VII	3	2	2	2	3	2	2	3	2	3	4	4

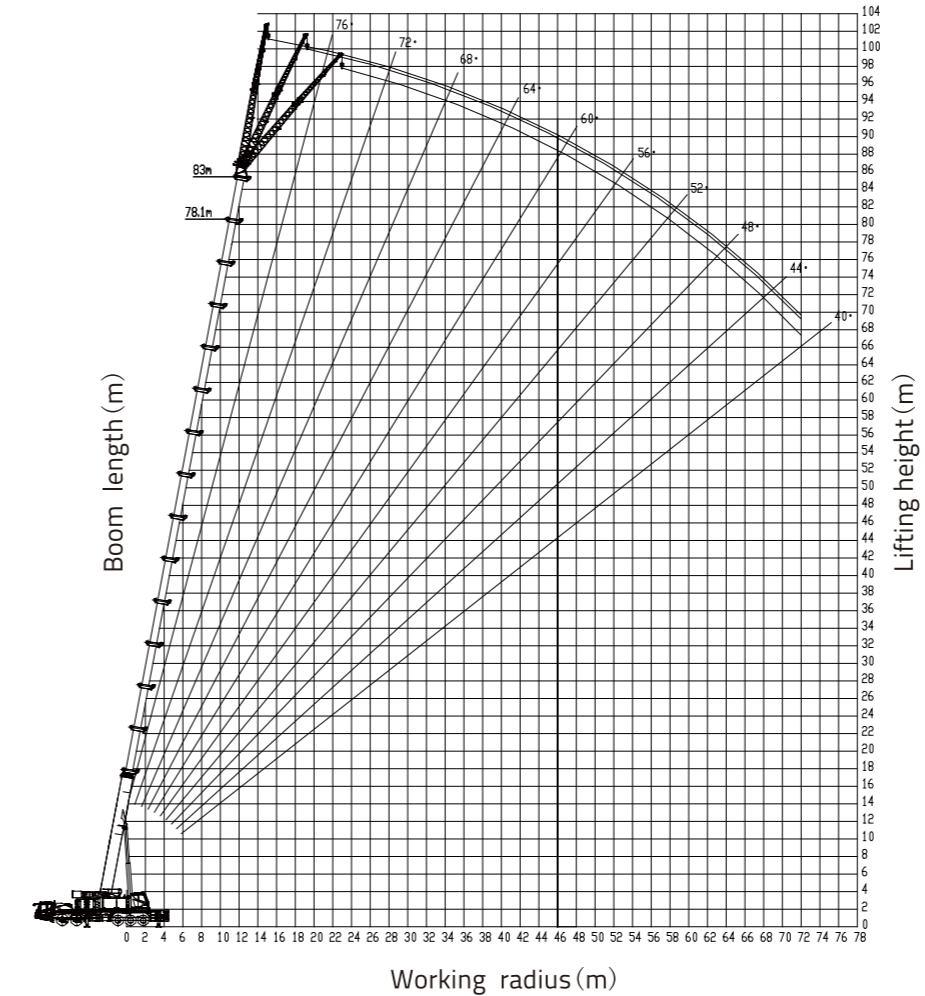
LIFTING HEIGHT CURVE

Unit: t Main boom + 10.4 m jib OM

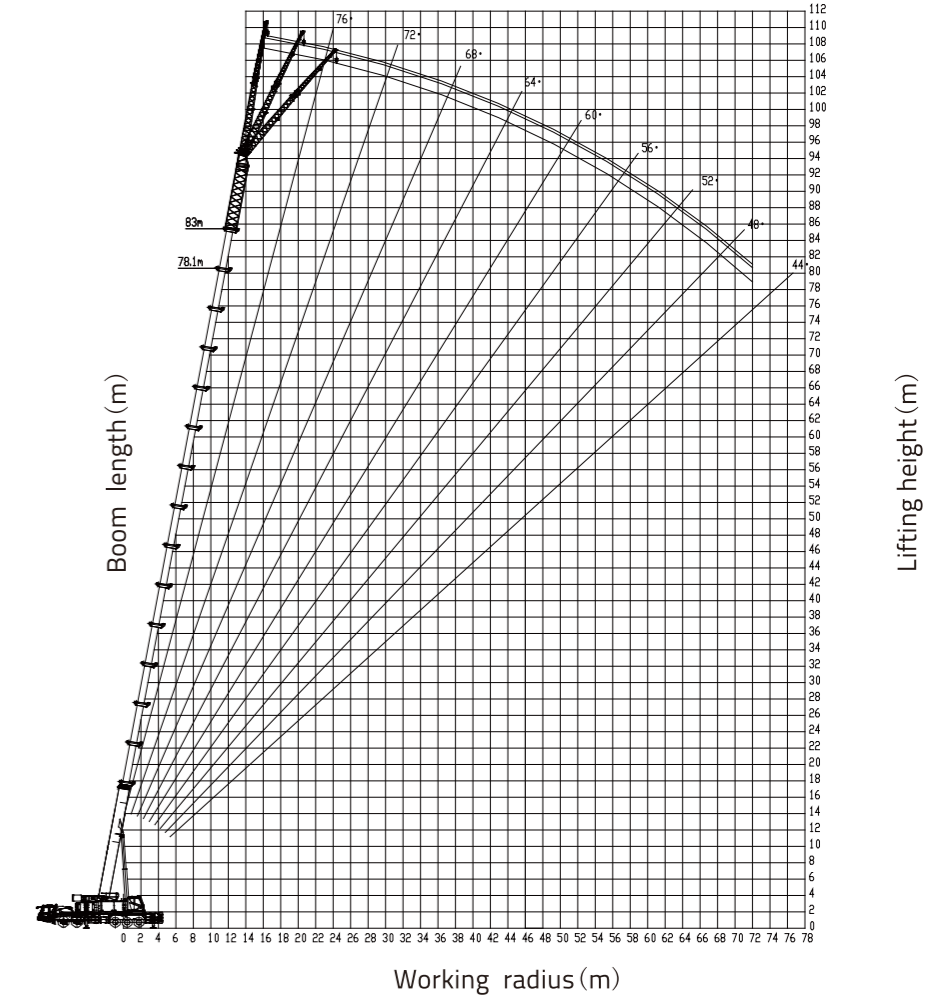


LIFTING HEIGHT CURVE

Main boom + 17.5 m jib OM

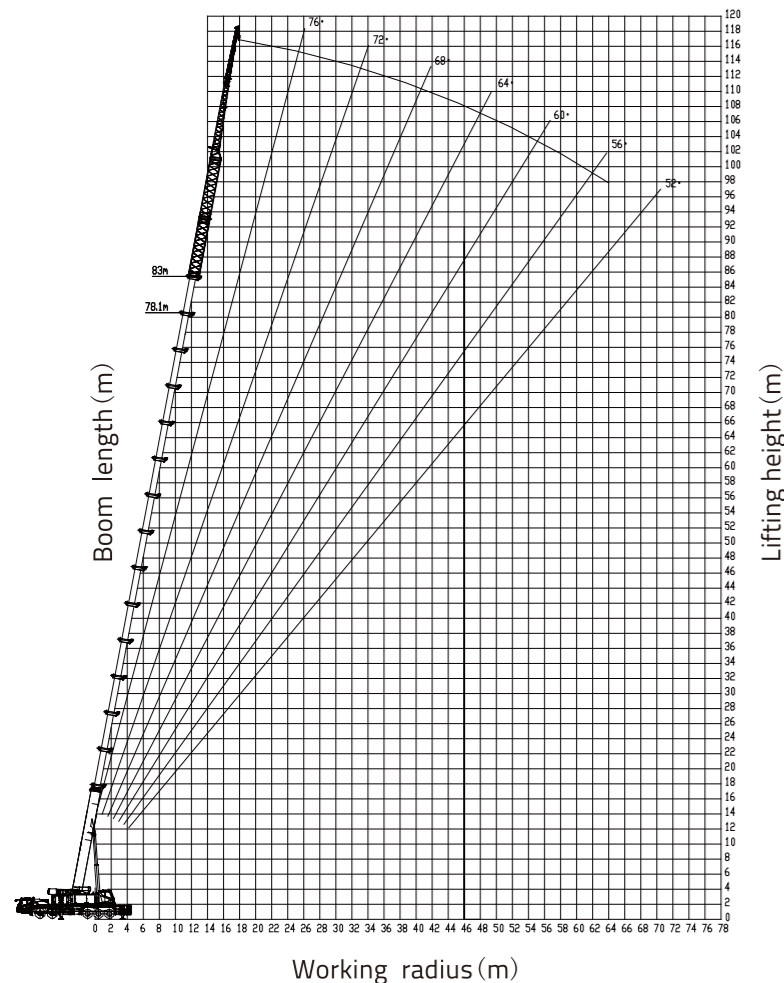


Main boom + 25.5 m jib OM



LIFTING HEIGHT CURVE

Main boom + 33.5 m jib OM



LIFTING CAPACITY TABLES

Main boom + Jib

Unit: t

Outriggers completely extended 8.3 m, with 64 t counterweight, over full range																				
Working Radius (m)	Main boom (m) + Jib (m)																			
	78.1		83		78.1		83		78.1		83		78.1		83					
	10.4	30°	10.4	30°	17.5	30°	17.5	30°	25.5	30°	25.5	30°	33.5	30°	33.5	0°				
20.0																				
22.0	5.5																			
24.0	5.5	5		4.5																
26.0	5.5	5	4.5	4.5	4.2		3.6					2.5								
28.0	5.2	4.9	4.5	4.4	4.2	3.8	3.6	2.8				2.5			2					
30.0	4.9	4.6	4.4	4.2	4.1	3.8	3.5	2.8	2.5	2.8	2.4		2.5	2.2	2	1.6				
32.0	4.6	4.3	4.1	4	3.9	3.6	3.4	2.8	2.5	2.8	2.4	2	2.5	2.2	1.8	2	1.8	1.6	1.3	
34.0	4.3	4.1	3.9	3.8	3.7	3.5	3.3	2.8	2.4	2.8	2.4	2	2.4	2.1	1.8	2	1.8	1.6	1.3	
36.0	4	3.8	3.6	3.6	3.5	3.3	3.2	2.8	2.4	2.7	2.3	1.9	2.4	2.1	1.8	2	1.7	1.7	1.5	1.3
38.0	3.8	3.6	3.4	3.4	3.3	3.1	3.1	2.8	2.4	2.6	2.3	1.9	2.3	2.1	1.8	2	1.7	1.6	1.5	1.2
40.0	3.6	3.4	3.2	3.2	3.1	3	3	2.6	2.3	2.5	2.2	1.8	2.3	2	1.8	2	1.7	1.5	1.5	1.2
42.0	3.4	3.2	3	3	2.9	2.8	2.9	2.6	2.3	2.4	2.1	1.8	2.2	2	1.7	1.9	1.7	1.5	1.4	1.2
44.0	3.2	3	2.8	2.8	2.7	2.6	2.7	2.5	2.3	2.3	2.1	1.8	2.2	2	1.7	1.9	1.7	1.5	1.4	1.2
46.0	3	2.9	2.7	2.6	2.5	2.5	2.5	2.4	2.2	2.2	2	1.7	2.2	1.9	1.7	1.9	1.7	1.5	1.4	1.1
48.0	2.8	2.7	2.5	2.4	2.4	2.3	2.4	2.3	2.2	2.1	1.9	1.7	2.1	1.9	1.7	1.8	1.7	1.5	1.3	1.1
50.0	2.6	2.5	2.3	2.3	2.2	2.2	2.3	2.2	2.1	1.9	1.8	1.6	2	1.8	1.6	1.7	1.6	1.4	1.3	1.1
52.0	2.5	2.4	2.2	2.2	2.1	2.1	2.2	2.1	2	1.8	1.7	1.6	1.9	1.8	1.6	1.6	1.6	1.4	1.3	1.1
54.0	2.3	2.2	2	2	2	1.9	2	1.9	1.9	1.7	1.6	1.5	1.8	1.7	1.6	1.5	1.5	1.4	1.3	1.1
56.0	2.2	2.1	1.9	1.9	1.9	1.8	1.9	1.8	1.8	1.6	1.5	1.5	1.7	1.6	1.5	1.4	1.4	1.3	1.2	1.1
58.0	2.1	2	1.8	1.8	1.8	1.7	1.8	1.7	1.7	1.5	1.4	1.4	1.6	1.5	1.4	1.3	1.3	1.2	1.2	1
60.0	1.8	1.8	1.7	1.7	1.6	1.6	1.7	1.6	1.6	1.4	1.3	1.3	1.5	1.4	1.3	1.2	1.2	1.2	1.1	1
62.0	1.5	1.5	1.5	1.5	1.5	1.5	1.5	1.5	1.5	1.3	1.2	1.2	1.4	1.3	1.2	1.1	1.1	1.1	1	1
64.0	1.2	1.2	1.2	1.3	1.3	1.3	1.3	1.4	1.4	1.2	1.1	1.1	1.3	1.2	1.2	1.1	1.1	1	0.9	0.9
66.0	1.1	1.1	1.1	1.2	1.2	1.2	1.3	1.3	1.3	1.1	1	1	1.2	1.2	1.1	1	1	1		
68.0	1	1	1	1.1	1.1	1.1	1.1	1.2	1.2	1	1	1	1.1	1.1	1.1	1	1	1		
70.0				1	1	1	1	1.1	1.1	1	0.9	0.9	1	1	1	1	0.9	0.9		
72.0							1	1	0.9											
74.0													0.9	0.9	0.9					
76.0																				
78.0																				
80.0																				
82.0																				
84.0																				
86.0																				
Reeving																				
Hook																				

Note:

Telescoping combination of 78.1 m boom length: 33333332.

Telescoping combination of 83 m boom length: 33333333.

10.4 m jib: Adaptor + jib section I.

17.5 m jib: Adaptor + jib section I + jib section II.

25.5 m jib: 8 m Extension + adaptor + jib section I + jib section II.

33.5 m jib: 8 m Extension + 8 m extension + adaptor + jib section I + jib section II.

TECHNICAL SPECIFICATIONS

Crane Superstructure

Main boom The box-shaped main boom consists of 8 oval boom sections made of low-alloy and high-strength steel plate, providing the boom with excellent bending-resistance capacity.

Jib It consists of two jib sections, 25.5 m (One section of 8 m jib extension is available for options.), 33.5 m (Two sections of 8 m jib extension are available for options.). The jib cannot be attached with the vehicle during driving. During short-distance travelling, the jib is folded on the side of the main boom via the pins.

Superstructure engine B5.9CS4 220C, Rated power / RPM: 154 kW at 2200 r/min. Max. output torque / RPM: 820 N.m at 1300 - 1700r/min.

Crane Carrier

Chassis frame Made by ZOOMLION with high-tensile steel plate.

Outrigger H-type outriggers, hydraulically extendable into horizontal and vertical directions.

Engine WP12.460E50, Rated maximum power / RPM: 338 kW at 1900 r/min. Max. output torque / RPM: 2110 N.m at 1000 - 1400r/min. Capacity of diesel oil tank: 500 L.

Transmission Fast 12-gear 12JZSD220A transmission system manufactured by Shaanxi FAST Auto Drive Co., Ltd.

Axles Driving with 10 x 6 With disc brake and drum brake.

Suspension Hydro-pneumatic suspension, load equalization between the axle pairs. The suspension height can be adjustable.

Steering All axles steered. The steering system which is mechanically and electro-hydraulically controlled, consists of a double-channel steering gear. Axles 1 and 2 are mechanically steered by the steering wheel. Axles 3, 4 and 5 are steered by the electro-hydraulic proportional control system.

Brake It consists of service brake, acting on 5 wheel hubs, parking brake (Emergency brake), acting on 4 wheel hubs, and Auxiliary brake. Dual-circuit brake system, drum brakes on all axles.

Tires 385/95R25

Driver's cab Modern and luxury driver's cab with man-machine friendly layout offers a comfortable operating experience. AC and heater.

MAIN TECHNICAL PARAMETERS

Item		Value	Remarks
Working performance	Max. rated lifting capacity	t	160
	Max. load moment of basic boom	t.m	525
	Max. load moment of main boom (fully extended)	t.m	202.4
	Max. lifting height of basic boom	m	14.4
	Max. lifting height of main boom	m	88
Working speeds	Max. lifting height of jib	m	116.5
	Max. hoist rope speed (Main winch)	m/min	135
	Boom derricking up time	s	70
	Boom extending time	s	880
	Slewing speed	r/min	0 - 1.6
Driving	Max. operation altitude	m	2000
	Max. driving speed	km/h	80
	Max. gradeability	%	45
	Min. turning diameter	m	18.5
	Min. ground clearance	mm	326
Mass	Limits for exhaust pollutants and smoke		Europe V
	Front overhang angle	°	18
	Rear overhang angle	°	10
	Deadweight in driving condition	kg	61800
	Complete vehicle kerb mass	kg	61605
Dimension	Single axle load	kg	12000/12000/12600/12600/12600
	Overall dimensions (L x W x H)	mm	17015 x 3000 x 4000
	Outrigger spread (W)	m	Completely extended: 8.3 m intermediate extended: 5.5 m
	Outrigger spread (L)	m	9.23
	Slewing radius of counterweight tail	mm	5820
Jib length	Main boom length	mm	14.4 - 88
	Boom angle	°	-0.5 - 80
	Jib length	m	10.4, 17.5

Optional: 25.5m, 33.5m