

JOHNSON ARABIA

EDITION 3.2022
December 20

Winter Edition

Spiders Everywhere

See how our spider cranes can be your perfect lifting partner

AMAZING PROJECTS

*highlights of projects
we worked on this
quarter*



Employee
focus: Health
is important.



PLUS

**MEET OUR OMAN
TEAM**

Directors Message

You will never lift alone.

As the year comes to an end the team at Johnson Arabia is happy to have had another successful year in the market. I am thrilled to have seen the team complete new challenging projects this year and I am grateful to our clients to have always placed their trust in us as their lifting partners. From the iconic lifts for "Etihad rail" to being equipment and lifting specialists at the recent F1 Grand Prix we at Johnson Arabia have successfully exhibited our expertise to take on a diverse portfolio of projects. I am proud of my team and we hope to be able to continue being the regions trusted lifting partner for many years to come. I wish everyone a Merry Christmas and a Happy New year!



Mr. Martin Kirby,
M.D Johnson Arabia



Our Amazing Projects

While we are proud of every thing we do, these projects showcase our versatility and skill.



Etihad Rail, Abu Dhabi
This project required our cranes on site to life the individual locomotive units to be placed on tracks



Office Complex, Oman
This project entailed external maintenance of an almost complete building using our AWP's



Museum of the Future, Dubai
Johnson Arabia mobile crane used for external Maintenance work near museum of the future.



F1 Grand Prix, Abu Dhabi
Our Scissor lift and crane were used to help get the iconic Rolex clocks up for the event.

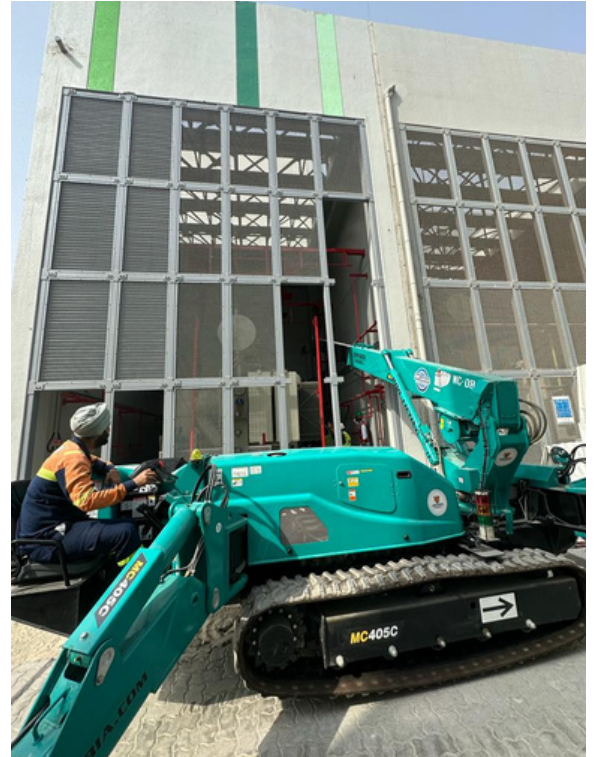
Johnson Arabia's Spider Cranes

these versatile machines can be used on most sites and have an array of indoor and outdoor use.

Restricted access cranes, like the Maeda Spider Cranes, rented out by Johnson Arabia in the GCC, is what the industry currently needs for many of the projects in the place of heavier machines that usually have a larger footprint. Spider cranes are compact, safe, and versatile in the way they can be used from rough terrains to tight stairways.

Mohammed Fared explains “Our team will often recommend these spider cranes for projects in power stations, hospitals, malls tight urban locations and even movies! Main reason being, they are compact enough to fit through standard door frames and have the ability to lift up to 8 tons with its outriggers set up for load stability” he also adds “glazing companies can use these spider cranes on sites from inside the structure and not need to schedule time for the use of a tower or mobile crane and this helps with project timelines as well.

Johnson Arabia's recent project is a perfect example of this where a 300 kg radiator needed to be lifted Inside a power station and the MC 405 Maeda crane was used. The major challenge of this project was the weight of the radiator and the fact that the roofing on the building was complete so no mobile crane would be able to access it. The only solution was to position a spider crane outside with its “arm” on the inside for this lift. Due to the compact size and the team’s perfect engineering, they were able to perform this lift successfully and with ease.



Another project that was done in recent months was an indoor art installation. Since the interior was fully finished and the art piece was schedule to be installed after, the best option to lift and place this heavy piece was a spider crane. The crane was easily brought in through the doors, the lift was completed and the team was able to leave with no impact to the existing interiors.



Finally, these spider cranes are perfect for movie sets or events where the spaces are confined by the studios but there is a need for these lifts as part of the story line of event requirement.

Employee Focus



Women's health focus in October

As part of our endeavors to ensure all our staff is well care for the women at Johnson Arabia attended a very special Seminar by Dr. Dana Haddad from the Health Bay Clinics. The seminar was organized by the Kanoo group and they invited all the women in their subsidiaries to be a part of this informative seminar that focused on women's health and prevention of Breast Cancer.

Sales back to floor day BBQ in November

In November the sales team at Johnson Arabia had a back to floor day BBQ to ensure the teams achievements were recognized and the team felt supported at all times. This BBQ was attended by the team at Kanoo Cranes and Wolffkran Cranes as well.



Meet the Oman Team!



Our team in Oman has been very busy this year with the expansion and opening of our new office in Muscat.

They have overseen many projects from the Oman Botanical Gardens to the Sohar Sugar Refinery and even St Regis Hotel Muscat.

Give our team in Oman a call for your lifting needs

800-LIFTS
8 0 0 - 5 4 3 8 7

L-R
Mohammad Al Touqi, Canute Cutinho, Sulaiman Al Baloushi, Ahmed Shameem and Sean Kenny

Product Feature



KATO KRM (MR130Ri) 13 TONNE

KATO

The Kato is Highly Maneuverable and Handles Rough Terrain well. it has a 29.5 Meter Boom with jib and is Ideal for tight access sites because of its 2 meters width and four wheel drive capability.

THE FUTURE BELONGS TO THOSE WHO BELIEVE IN THE BEAUTY OF THEIR DREAMS
-ELEANOR ROOSEVELT