

JOHNSON ARABIA

EDITION 3.2021

September 15

Autumn Edition

Tandem lifts for super heavy lifts

*1 lift, 2 cranes, 500 tonnes of
weight*

Crane Dismantle

its all about planning.

AMAZING PROJECTS

*highlights of projects we
worked on this quarter*



Feature PLUS

RIGGING SAFETY.

Our HSE expert
Nithin Kanju talks
about rigging
safety

Directors Message

This summer there has been much to celebrate with markets improving and travel opening up. This has enabled us to attend events such as the Big 5 in Egypt and conduct regional business. We have completed some amazing lifts this summer which included a tandem lift of a yacht and a locomotive for Etihad rail. Our business has seen excellent utilization with branches in Oman handling major government and refinery projects. Additionally, we are once again looking at opportunities in many markets including Africa, the GCC and the evolving Saudi market.

Our key strategy has always been to focus on providing the best and most professional lifting solutions and end to end lift planning including skidding, jacking and transportation at a competitive package. We are also continuously collaborating with our counter parts at Kanoo to offer a full package deal to provide cranes, man lifts and other machinery so that we can be a one stop shop for equipment rental.

The AWP Division has expanded its offering with an increased fleet of larger booms to meet increasing demand and we have added additional spider cranes into our fleet where we have completed some very interesting internal lifts.

We very much pride ourselves on being the customer's first choice when it comes to reliability, ethics and integrity, there can be no compromises.

As always we are very grateful to our clients and customers for their faith in our business and services. and as we move further into the year we look forward to reducing temperatures but a market that heats up.

We will achieve great success with our dedicated workforce together with our clients and partners



Mr. Martin Kirby,
M.D Johnson Arabia



Our Amazing Projects this Autumn

While we are proud of ever thing we do, these projects showcase our versatility and skill.



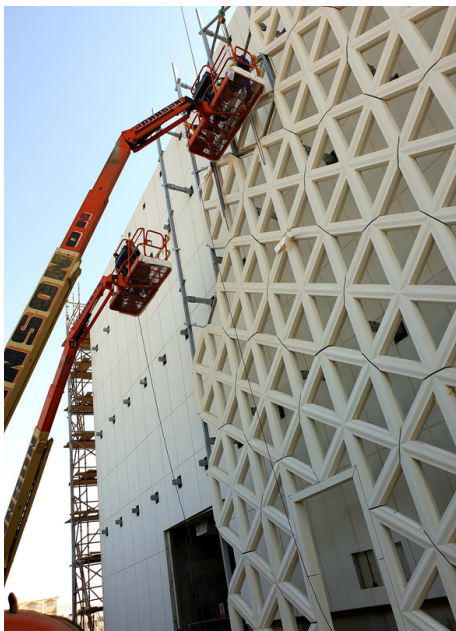
Downtown, Dubai

Our Liebherr 400tonnes with a 49 meter luffer was used to dismantle a tower crane on site in Downtown Dubai. Utmost care had to be taken so as to not cause any obstructions as this is very close to a main road and walkways.



Meydan, terrace project

Our Terex demag AC 500-2 with 60m luffer was used on this site to dismantle a tower crane with a team of engineers who did an end to end dismantle plan to ensure safety and that surrounding structures were not affected.



Khalifa city, Abu Dhabi

This was a straight forward maintenance project where we used two of our JLG 660SJ to re do the cladding and touch up paint



Etihad Rail, Abu Dhabi

Etihad Rail network will be the first national freight and passenger railway network connecting the seven emirates. Our cranes are a crucial part of this as we have 10 cranes on site ranging from 50-100t and occasionally bigger cranes like the with a 300tonne capacity tandem lifts for locomotive unloading.

Tandem lifts for super heavy lifts

How we carefully rig and position the cranes to complete jobs.

At Johnson Arabia we are very proud of all the work we do and we believe that every member of our team is an essential part of a project success. On sites our riggers play a key role in having a good understanding how they will prepare and erect a crane to perform the lifts as per plan.

For example, this UAE port site required Terex 400 ton and 350 ton crawler cranes which had to be carefully assembled to lift marine equipment from a docking area to place it on the water.

As there were various lifts; straight lifts with one crane and tandem lifts with two involved in this, the cranes capacities were precisely studied and certain configurations were selected to have extra and sufficient safety margins while lifting the highest load.

Additionally for lifts similar to this the cranes ground bearing pressure must also be taken into consideration and sometimes we need to use mats underneath the tracks to spread the loads within the permissible limits.

The Johnson Arabia team skillfully able to move the load using suitable lifting gear to lift it safely, do a quick scan for any hazards in the surrounding area and test out the mobility and maneuverability of these crawlers in a confined area before proceeding with the lifts.

Executive Manager Mohammed Fareed Nasser says “For a projects with such heavy lifts we have to be very vigilant of the safety of our team, the other equipment on site and ensure our riggers did a thorough job at preparing the crane. We also ensured that at any point our team would be allowed to stop work if they questioned any safety protocols to analyze and reset to mitigate any risks. I am happy to say that all our jobs are completed with 100% success, thanks to the excellent work of our engineers, riggers, HSE and crane operators”



Its all Rigged!

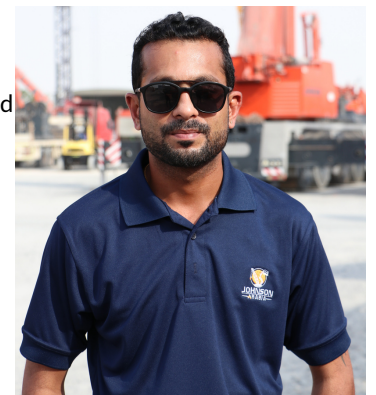
Our HSE expert Nithin Kanju talks about rigging safety

Rigging is a highly specialized skill set and involves the preparation of crane equipment, hoists and other machinery that is commonly used on construction sites, shipyards, oilfields, ect to assist with very heavy lifts.

To begin with all riggers on site must be well trained and qualified. Well experienced riggers are able to foresee an imminent rigging issue when they are well Aware of the ground conditions, weight of the load and the capacities of the crane and rigging gear that is on site for a job. Once this is done they must do a full inspection and evaluate all the safety aspects of the equipment, site and even the weather conditions. Strong winds or sandstorms in this region can hamper a lift and could lead to serious damages.

Another key aspect of rigging is having a well-qualified and observant spotter. Spotters are the people who act as a second set of eyes for riggers and operators on site as they have a higher vantage point and can immediately alert the riggers and crane operators using their walkie talkies or hand signals of any issues. Having said that spotters also need to be at a very safe distance from the equipment so as to not harm or injure themselves.

Finally, watch those toes and fingers! Sometimes we look at all the bigger aspects of safety and have ourselves covered but a lot of smaller avoidable injuries to the arms and limbs are caused due to split second carelessness where fingers, hands and even feet get trapped under equipment or get jammed in doors. Riggers, spotters and crane operators must be very careful of their own safety and be very aware of their surroundings to avoid injury or even death



Experts in Tower Crane Erection and Dismantle



IPAF Tips



Be aware of all occupants of an aerial work platform. Not checking while moving can cause injury



Is the Nominated Ground Rescue Person familiarised?
MEWPs are all different. Learn and practice the ground controls and the auxiliary/emergency lowering controls and procedures on your machine

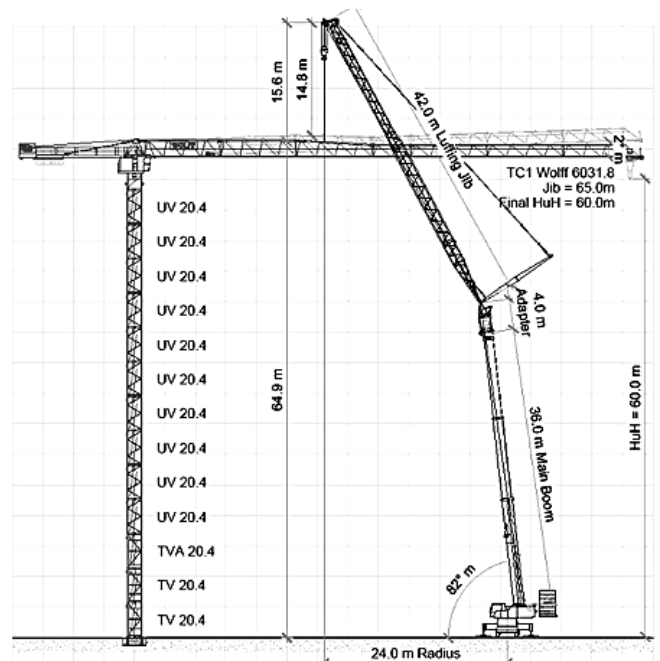
To be Trained in IPAF Contact us and we will make sure your operators know how to safely use equipment 800 LIFTING

Johnson Arabia believes that adequate planning is essential for the safe erection, dismantling and alteration of a tower crane. Additionally, we liaise with the contractor and tower crane company to ensure the operation is to take in an efficient safe manner, with the absence of "unforeseen circumstances" and governed by all Health and Safety Guidelines.

we make sure that those engaged in crane lifting operations clearly understand their duties, the standards expected of them, site rules with regards to lifting, the site crane/lifting management plan and the communication structure for feedback whilst they work on the project.

We can help establish

- Crane type and size
 - Temporary works required
 - Power supply
 - Access type
 - Physical restrictions on operations
 - Environmental restrictions on operations
 - Restrictions caused by adjacent undertakings/structures
 - Responsibility for associated activities i.e. road
 - Help with closures or special permission liaison with client.
- Once established we are able to create an efficient work flow that allows us to work fast for our clients.



"QUALITY MEANS DOING IT RIGHT WHEN NO ONE IS LOOKING."

HENRY FORD