

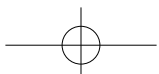


SANY

Quality Changes the World



SANY CRAWLER CRANE SCC 2500C





CRAWLER CRANE

CONTENT

P3

SCC2500C Crawler Crane

- Outline Dimensions
- Main Technical Features
- Main Performance Data
- Transport Dimensions
- Assembly/Disassembly Diagram

P14

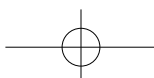
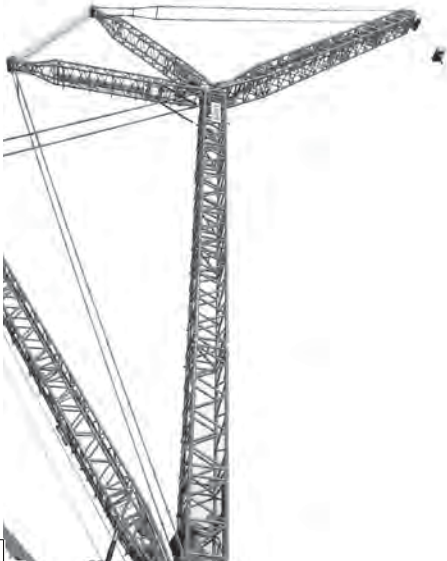
Specifications

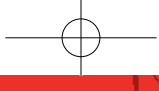
- Upperworks
- Lowerworks
- Operation Divices
- Safety Devices

P21

Operating Condition Combination

- Operation conditions
- H Operating Condition
- FJ Operating Condition
- SF_H Operating Condition



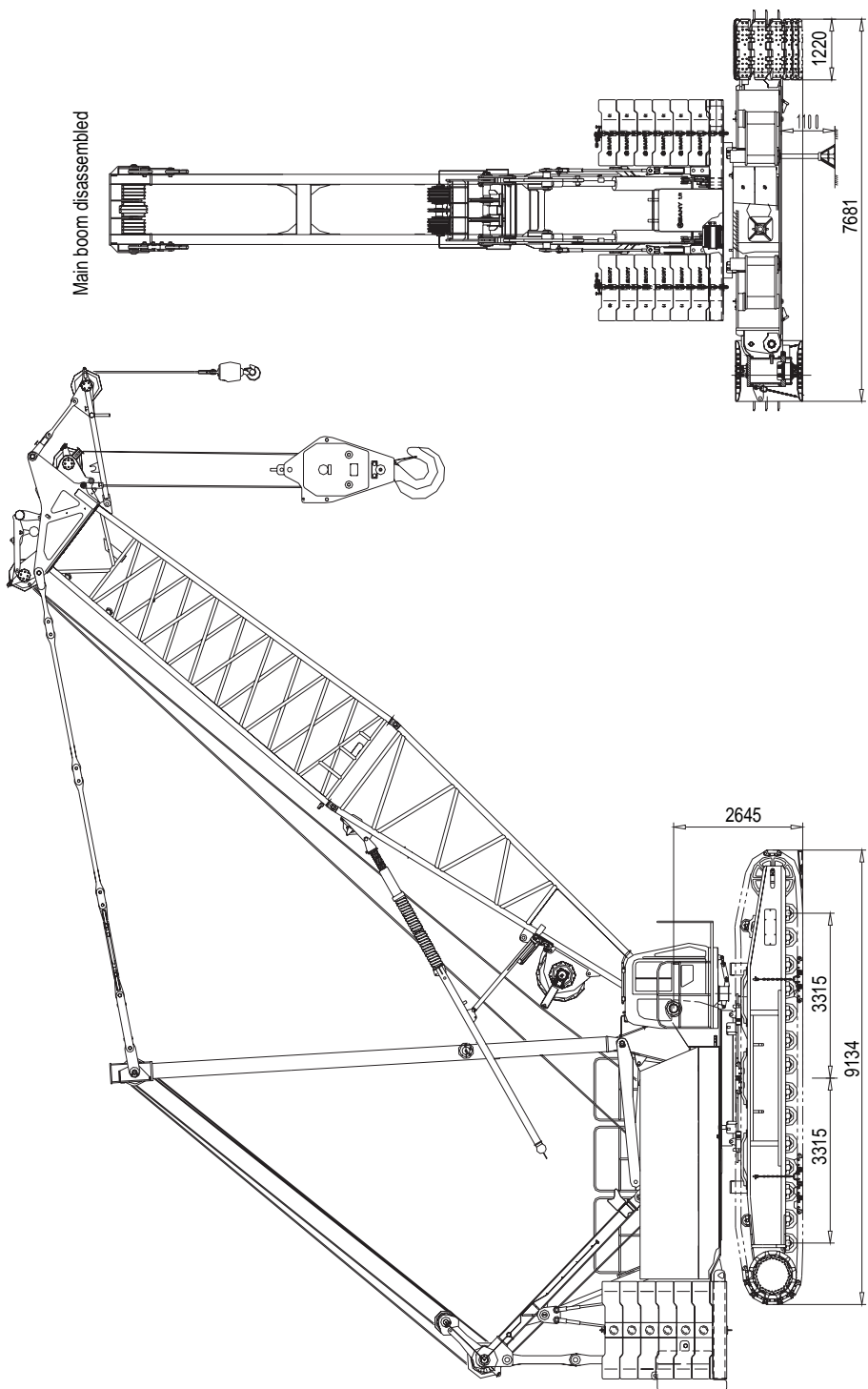


SCC2500C

04	Dimensions
05	Main Technical Features
06	Main Performance Data
07	Transport Dimensions
12	Assembly/Disassembly Diagram



OUTLINE DIMENSIONS





MAIN TECHNICAL FEATURES

1. Safety control system:

The two operating modes of working and assembling are convenient and reliable; the crane has the functions of real-time display of levelness, off-line stop action, emergency electric control, lightning protection, automatic traveling direction adjustment, CCTV monitoring, etc., electric and mechanical devices provide safety and reliability;

2. New Design of Hoisting Operating Condition:

With 19.5m boom + 7m fixed jib, the crane may be used for hoisting shield machines for metro construction and similar products; it may automatically complete the turnover work of shield machine without an auxiliary crane; and the maximum hoisting capacity of auxiliary hook is up to 80t. The load moment Indicator can dynamically reflect the load of main hook and auxiliary hook;

3. Outstanding operating performance:

Load sensing, limit load adjustment and electro-hydraulic proportion dead slow control offer the perfect inching performance of actions, and more stable operation;

4. Reliable function assurance:

Famous brand key components are adopted, the designed safety margin of structures and members are sufficient; the control system can operate stably under the harsh environments like weather plateau or sand wind;

5. Convenient maintenance technology:

It takes approximately no more than 10min/person to adjust; no more than 30min/person for daily maintenance; no more than 2h/person to repair. GPS remote monitoring system is optional for maintenance and management;

6. Powerful lifting capacity:

The maximum lifting capacity of boom is $206.1t \times 7m = 1442.7t \cdot m$, the longest boom is 91.5m; the maximum lifting capacity of luffing jib is $54.9t \times 16m = 878.4t \cdot m$, the longest boom combination is 61.5m+61m; the heavy-duty fixed jib can turnover objects that are of a weight 80T maximumly;

7. Efficient self assembly and disassembly technology:

The whole machine can be assembled and disassembled by itself, and the assembly of basic machine only takes 3h;

8. Large-chassis design:

The chassis designed with 6.46m gauge ensures excellent operation stability within 360° slewing range;

9. 100% load travel:

Powerful lifting & travelling forces and stability offer 100% load travel;

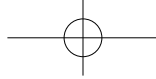
10. Broad adaptability:

Meet certification requirements of CE, North America, Australia, Russia and Taiwan; the engine emission complies with the European and U.S. Non-highway Stage 3 Standards.

MAIN PERFORMANCE DATA

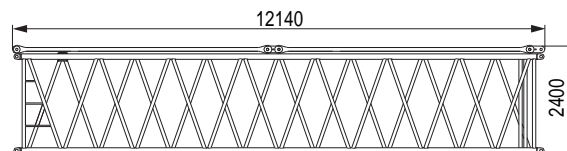
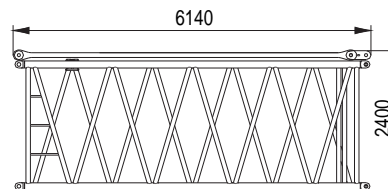
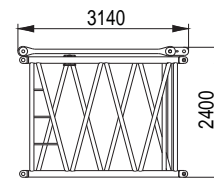
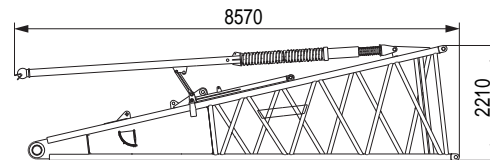
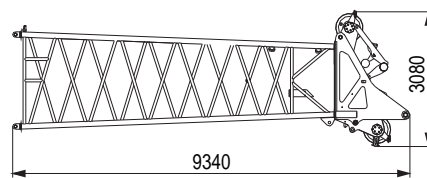
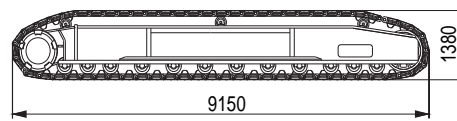
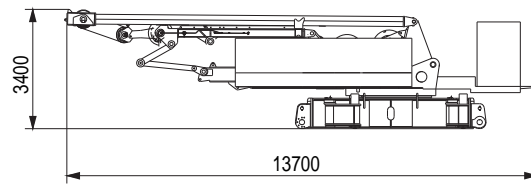
Main performance data of SCC2500C crawler crane

Performance index	Unit	Parameter
Boom operating condition	Max. lifting capacity	t
	Max. rated lifting moment	t·m
	Length of boom	m
	Boom luffing angle	°
Operating Condition of Fixed Jib	Fully extended boom + fully extended fixed jib	m
	Included angle between boom and jib	°
	Boom + Jib	m
Operating condition of heavy-duty fixed jib	Boom + jib (applicable to construction of metro shield)	
	Included angle between boom and jib	°
	Max. lifting capacity	t
Operating condition of luffing jib	Fully extended boom + fully extended luffing jib	m
	Jib luffing angle	°
	Rope speed of main (auxiliary) winch (outermost working layer)	m/min
	Rope speed of main luffing winch (outermost working layer)	m/min
Speed parameters	Rope speed of auxiliary luffing winch (outermost working layer)	m/min
	Swing speed	rpm
	Travel Speed	km/h
	Gradeability	%
	whole machine weight(with basic boom and 250t hook)	t
Engine	Output power	kW
	Rated speed	rpm
	maximum transport weight of single piece (including main/auxiliary hoisting winch)	t
Transportation parameters	Transport dimensions (length X width X height)	mm
	Average ground pressure	MPa



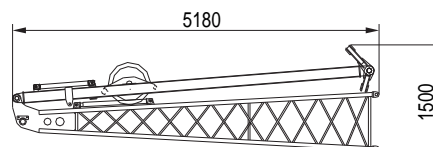
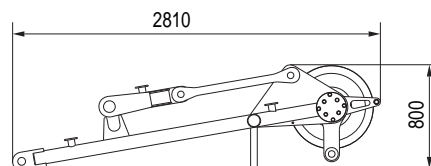
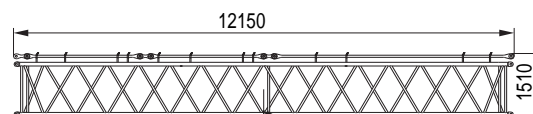
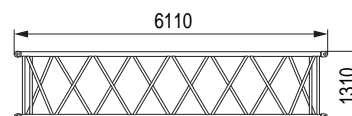
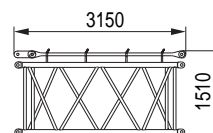
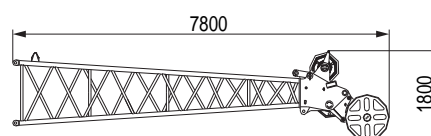
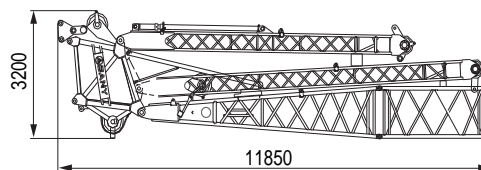
TRANSPORT DIMENSIONS

Basic machine	×1
Length	13.70m
Width	3.40m
Height	3.40m
Weight	59t
Crawler assembly	×2
Length	9.15m
Width	1.22m
Height	1.38m
Weight	27t
Boom tip	×1
Length	9.34m
Width	2.34m
Height	3.08m
Weight	4.5t
Boom base	×1
Length	8.57m
Width	2.34m
Height	2.21m
Weight	4.9 t
Including auxiliary luffing winch	7.3t
Boom 3m insert	×1
Length	3.14m
Width	2.34m
Height	2.4m
Weight	1.1t
6m Boom insert	×2
Length	6.14m
Width	2.34m
Height	2.4m
Weight	1.7t
12m Boom insert	×5
Length	12.14m
Width	2.34m
Height	2.4m
Weight	2.9t



TRANSPORT DIMENSIONS

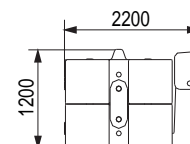
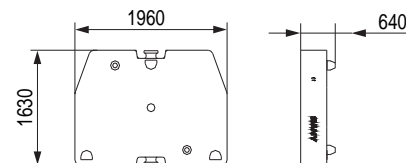
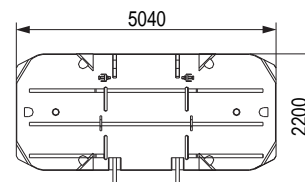
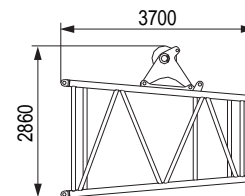
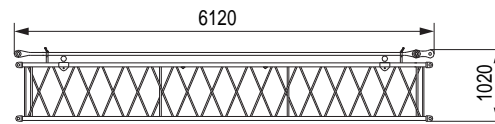
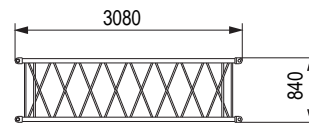
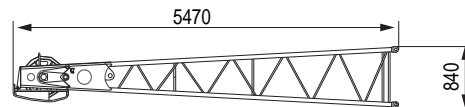
Tower operating condition combination	×1
Length	11.85m
Width	1.75m
Height	3.20m
Weight	7.1t
Luffing jib tip	×1
Length	7.8m
Width	1.50m
Height	1.8m
Weight	1.1t
3m Luffing jib insert	×1
Length	3.15m
Width	1.50m
Height	1.51m
Weight	0.3t
6m Luffing jib insert	×1
Length	6.11m
Width	1.50m
Height	1.31m
Weight	0.6t
12m Luffing jib insert	×3
Length	12.15m
Width	1.50m
Height	1.51m
Weight	1.4t
Boom extension	×1
Length	2.81m
Width	0.29m
Height	0.8m
Weight	0.3t
Fixed jib base and strut	×1
Length	5.18m
Width	1.01m
Height	1.5m
Weight	0.7t





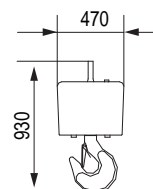
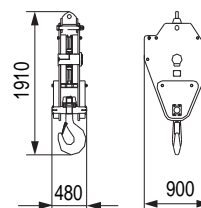
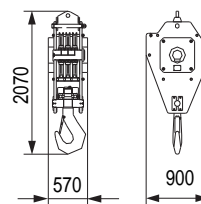
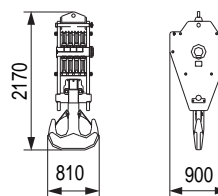
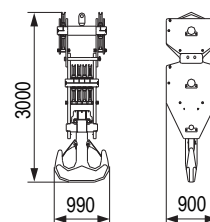
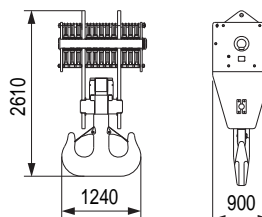
TRANSPORT DIMENSIONS

Fixed jib tip	×1
Length	5.47m
Width	1.01m
Height	0.84m
Weight	0.4t
3m Fixed jib insert	×1
Length	3.08m
Width	1.01m
Height	0.84m
Weight	0.2t
6m Fixed jib insert	×3
Length	6.08m
Width	1.01m
Height	0.84m
Weight	0.4t
Transitional section	×1
Length	3.70m
Width	2.23m
Height	2.33m
Weight	1.2t
Counterweight tray	×1
Length	5.04m
Width	2.2m
Height	0.68m
Weight	13.2t
Counterweight block	×12
Length	1.96m
Width	1.63m
Height	0.64m
Weight	6t
Counterweight of lowerworks	×2
Length	2.2m
Width	1.2m
Height	0.97m
Weight	12.4t



TRANSPORT DIMENSIONS

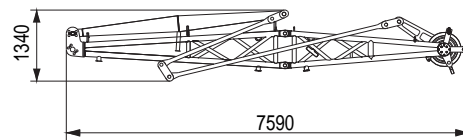
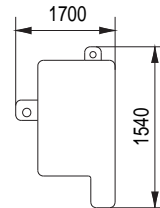
260t hook block etc	×1
Length	1.24m
Width	0.90m
Height	2.61m
Weight	4.3t
150t hook hook	×1
Length	0.99m
Width	0.90m
Height	3.0m
Weight	3.1t
100t hook hook (optional)	×1
Length	0.90m
Width	0.81m
Height	2.17m
Weight	2 t
80t hook hook	×1
Length	0.90m
Width	0.57m
Height	2.07m
Weight	1.5t
35t hook hook	×1
Length	0.90m
Width	0.48m
Height	1.91m
Weight	1.2t
13.5t hook hook	×1
Length	0.47m
Width	0.47m
Height	0.93m
Weight	0.5t





TRANSPORT DIMENSIONS

Additional counterweight	×1
Length	1.7m
Width	0.2m
Height	1.54m
Weight	5.8t
7m fixed jib	×1
Length	7.59m
Width	1.45m
Height	1.34m
Weight	2.3t



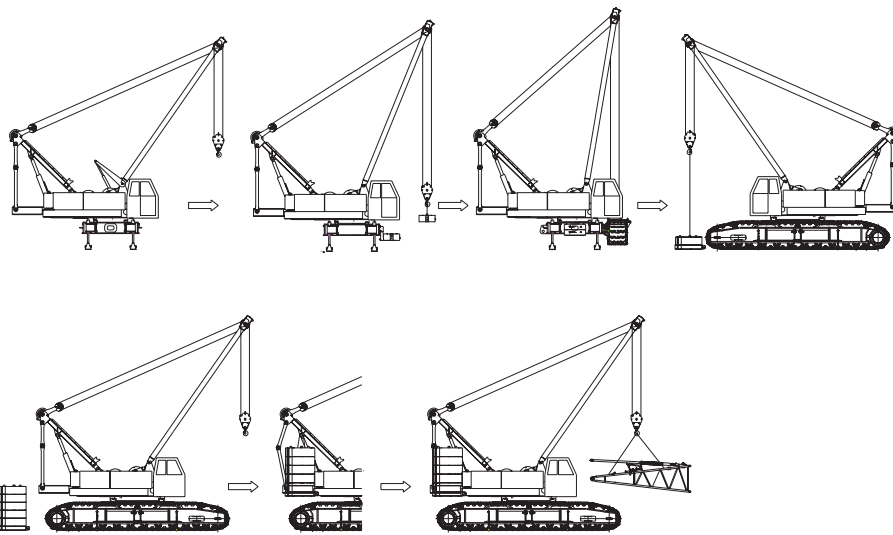
- Notes: 1.The transport dimensions of the parts are marked on schematic diagrams, but not drawn by scale; the dimensions indicated are the design values excluding package.
2.The weight is the design value and there may be difference due to the manufacturing inaccuracy.



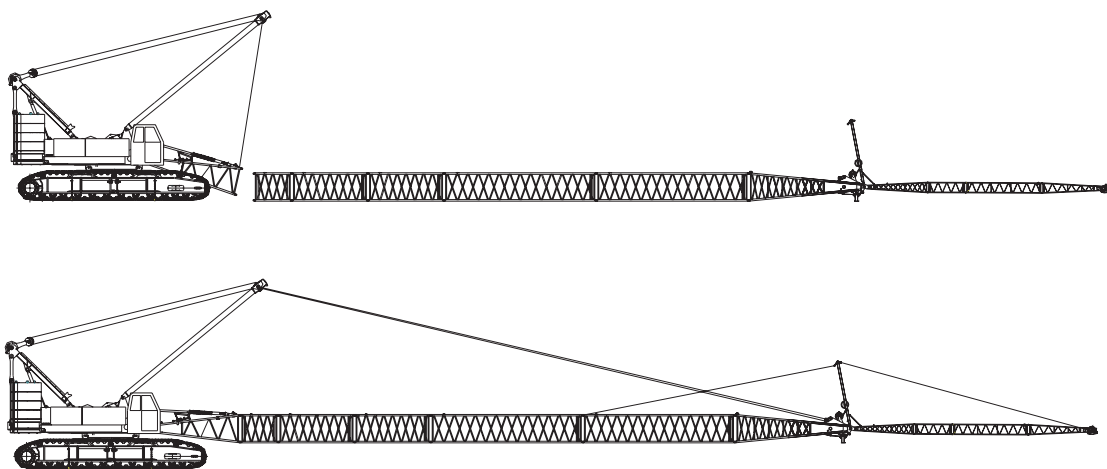
ASSEMBLY/DISASSEMBLY DIAGRAM

The machine has the functions of self-assembly/disassembly of crawler travel units, counterweights of superworks, and arm supports. In the process of assembly, the counterweights of lowerworks shall be first assembled, and then

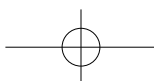
crawler travel units, counterweight of superworks, finally arm supports. Reverse the order in the process of disassembly, and see the figure below for specific operation process.



Self-assembly diagram of crawler frame and counterweight (as for disassembly, reverse the procedure)

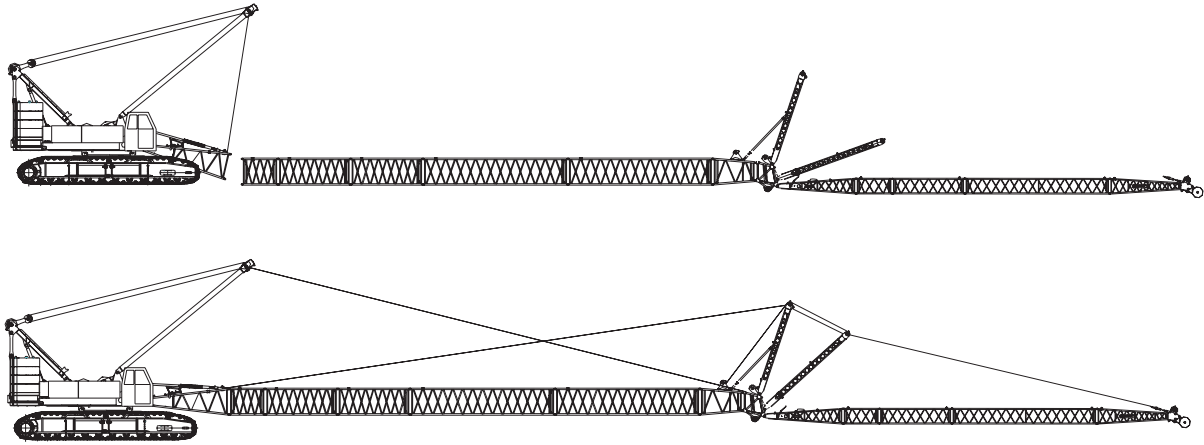


Assembly diagram of fixed jib

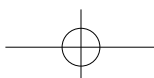
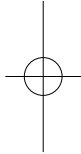
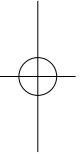




ASSEMBLY/DISASSEMBLY DIAGRAM



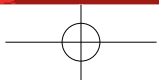
Assembly diagram of luffing jib





SCC2500C

Upperworks	15
Lowerworks	17
Operation Devices	18
Safety Devices	19



UPPERWORKS

1) Engine

- U.S. Cummins QSL9 tier3 diesel engine with rated power of 242kw (324hp)/2100rpm and rated torque output 1424N-m/1500rpm.
- Emission standard: Tier III .

2) Electrical control system

- The system consists of central control unit, human-machine interface, actuator, and connecting wires, etc.
- Reliability: The main electric devices are famous brands in the world or industry; the control system can operate stably under the harsh environments like extreme cold, high temperature, plateau or sand wind.
- Safety: Electric design fully complies with CE standard, and multistage safety limit switches and safety signals are complete.
- Comfort: The electric parameters at various points can be seen clearly on the combined instrument of the driver' s cab, and the operating parameters and statuses are monitored in real time.
- Advancement: the electric CAN bus system composition of the whole truck, load power limit loadcontrol, redundant communication check, and optional global positioning and remote monitoring scheme.

3) Hydraulic System

- The hydraulic system includes: hoisting system, travel system, swing system, luffing system, cooling circuit, auxiliary hydraulic system and servo hydraulic system. Major hydraulic elements are all Rexroth or Kawazaki products.
- Kawasaki system is an open positive flow system, boasting fast operation response, stable, accurate action, little heat generation, and long life. Rexroth system is a load-sensitive LUDV system. It may realize flow distribution not related to load, adopt hydraulic proportion pilot control, boasting flexible operation and good inching performance. The system pressure is 31.4MPa.

4) Main and Auxiliary Hoisting Mechanisms

- The main and auxiliary winch mechanisms are driven separately and are easy to assemble with their concise structure, and the maintenance-free, built-in, wet brake, boasting low abrasion, ensures the safety of winches.
- The variable displacement motor of hoisting mechanism can achieve max. winch speed by adjusting the displacement automatically according to load.
- High-quality non-rotating wire rope is selected to ensure high hoisting safety and long service life.
- Bag shackles are selected, enabling convenient and fast disassembly and assembly of wire rope.

NO.1 Main Hoisting Mechanism

Rope speed of the outermost working layer	0~143 m/min
Wire rope diameter	26mm
Wire rope length of main winch	480m
Rated single rope tension	14.5t

NO.2 Auxiliary Hoisting Mechanism

Rope speed of the outermost working layer	0~143 m/min
Wire rope diameter	26mm
Wire rope length of auxiliary winch	390m
Rated single rope tension	14.5t

5) Main Luffing Mechanism

The main luffing reel is equipped with ratchet wheel/ pawl locking device to ensure the safety of the hoisting arm in non-service state.

NO.3 Main Luffing Mechanism

Rope speed of the outermost working layer	(0~31)×2m/min
Wire rope diameter	22mm
Wire rope length of main luffing winch	350m
Rated single rope tension	11.2t

6) Auxiliary Luffing Device

The auxiliary luffing reel is equipped with ratchet wheel/pawl locking device to ensure the safety of the hoisting arm in non-service state.

NO.4 Auxiliary Luffing Device

Rope speed of the outermost working layer	0~34m/min
Wire rope diameter	22mm
Wire rope length of auxiliary luffing winch	265m
Rated single rope tension	11.2t

7) Swing Mechanism

- Slewing device: provide 360° slewing, driven by slewing motor.
- Slewing brake: spring-locked, blade-type brake opens through hydraulic control.
- Slewing locking: A locking device is provided to protect the upper slewing from impact during hoisting or transportation.
- Slewing speed: Maximum 1.8 r/min.

8) Cab

- Unique SANY characteristics, the closed and wide vision driver's cab is equipped with heating and cooling air conditioner, adjustable driver's seat, console, armrest, moment limit system display, audible and visual warning light, monitoring system display, etc. All of these devices are designed according to ergonomics.
- The tilting cab broadens the operation vision of the driver, thus improving the safety in operation; it can be rotated and thus reduces the transportation width.

9) Control Operation

- The crawler traveling can be controlled through the control lever or traveling pedal. The traveling has the function of automatic direction adjustment, i.e., however the superworks rotate, the operating direction is always the forward direction of the operator.
- The actions of winch reel, auxiliary reel, luffing and slewing are controlled by different manipulation level.
- Various operating buttons, control switches, air conditioning control panel, etc are distributed on the left and right armrest boxes to realize different control functions.

10) Alarming display

When all alarm information, including wind speed, water temperature, oil temperature, oil quantity, operating time, engine revolutions, etc. will be indicated on the screen in the driver's cab and the audio and visual alarm is given at the same time.

11) Lubrication System

The superworks adopt a centralized lubrication system under automatic control, thus reducing the maintenance frequency and ensuring the reliable lubrication of movable part.



LOWERWORKS

1) Traveling Drive

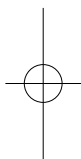
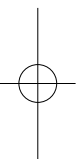
Each crawler component is equipped with an independent traveling drive. The hydraulic traveling motor drives planet gear reducer to achieve independent traveling through the transmission of the driving wheel.

2) Travel Brake

The travel brake is a brake normally engaged in the reducer, and it is capable of automatic compensation, free of adjustment. When the operation pedal valve is pushed down, the brake will be released to realize traveling.

3) Crawler Shoes

The crawler shoe is made of high-strength and highly wearable materials, and its tension after it is assembled on the equipment can be adjusted with the hydraulic jack, and an ideal tension may be achieved by adjusting the position of adjusting gasket.



OPERATION DEVICES

1) Boom

- With main chords made of high-strength material, the boom is in a spatial truss structure with uniform section in the middle and variable sections at both ends.
- The factory-standard boom include: base 8m, tip 8.5m, insert 3mx1, insert 6mx2, and insert 12mx5.
- The length of boom ranges between the basic boom length (16.5m) and the maximum length (91.5m).

2) Fixed Jib

- The main chords are made from high-strength material. The boom is in a spatial truss structure with uniform section in the middle and variable sections at both ends.
- The tip is 5m long, base 5m, insert 3mx1 and 6mx3, and the available fixed jib length 13m, 19m, 25m and 31m respectively.
- It could be installed onto the boom of 28.5m~76.5m long.

3) Luffing Jib

- The main chords are made from high-strength material. The boom support is in a spatial truss structure with uniform section in the middle and variable sections at both ends.
- The tip is 6.5m long, base 6.5m, insert 3mx2, 6mx1, and 12mx3, and the available fixed jib length 22m, 25m, 31m, 37m, 43m, 52m and 61m respectively.
- It could be installed onto the boom of 22.5m~61.5m long.

4) Hook block

- 13.5t hook block
- 35t hook block
- 80t hook block
- 100t hook block
- 150t hook block
- 260t hook block

Note: The operation devices above are in all configurations, and the specific configuration should be subject to contract for goods.



SAFETY DEVICES

1) Load Moment Indicator

SANY self-made Load Moment Indicator.

- As an independent safety operation system controlled by computer, the load moment indicator may automatically detect the weight hoisted by the crane, operating radius and angle of boom, and compare the rated loading capacity with the actual load, operating radius and angle of lifting arm; In normal operation, it may automatically judge the direction of dangerous action of the crane in an intelligent way, and may also record the information on overload as it is equipped with a black box.
- Main components: display, host box, angle sensor, and force sensor.

2) Tri-color Load Alarm Light

the tri-colour load alarm light directly indicates the load conditions via three colours based on the information retrieved from load moment indicator .

3) Anti-pulley equipments of main and auxiliary winches

When the hook block is elevated to the upper height limit, an alarm will be given and meanwhile, the lifting of the hook block will be shut off.

4) Anti-over roll out Device for Main and Auxiliary Hooks

When the steel rope is rolled out to the last three rounds, an alarm will be given and meanwhile, the electric control system will automatically shut off the falling.

5) Switch for installation / Operation Model

- Under the installing mode, the over roll-out limit device, boom angle device and load moment limiter do not function to facilitate installation of crane.
- While under the operation mode, all these safety limit devices functioned.

6) Boom Angle Limit Detection Device

Under different operating conditions, the operation of crane boom or jib is controlled within the safe angle through limit switch detection and detection of boom support angle signal of the load indicator.

7) Boom Back-stop Device

- The boom back-stop support is made of steel to prevent the boom from tipping back via spring compression.
- The rear mast of luffing jib is equipped with a pair of cylinder back-stop devices to prevent the mast from leaning back and to tighten the mast draw plate.
- The mechanical back-stop device will prevent the jib from tipping backward when the included angle between the jib and boom is too small.

8) Winch Mechanism Brake

All the winch brakes adopt normally closed spring-loaded disc brakes, which provide numerous braking force and are safe, reliable, free of maintenance, and durable.



9) CCTV Monitoring System

With high-definition camera, the operator in the driver's cab may monitor the real-time state of luffing winch, hoisting winch and crane tail through the monitor.

10) Self-diagnosis System

The system may automatically generate fault and alarm information, check the electrification of in-service electric circuit, and help troubleshoot electric fault.

11) Pharos

It is mounted on the top of the winch support for guiding from high above, thus allowing the boom to keep erecting during night.

12) Anemometer

It is installed on the top of boom support to have real-time monitoring over the wind velocity and send data to the driver's cab to display on the monitor there.

13) Gradiometer

The bubble gradiometer is used as the basis of verification, and electronic gradiometer is used for real-time display with high accuracy to indicate the inclined angle of crane and the situation of safe operation ground of crane.

14) Boom Angle Indicator

Pendulum-type angle indicator ensured on one side of the boom base. The driver and the personnel outside can see it clearly.

15) Hook block Clamp

Each kind of hook block is equipped with a clamp plate to prevent the wire rope from falling off.

16) Operation Alarm

Before performing any operation to the crane, press the horn to give alarms, indicating that the crane will be operated and reminding others of safety.

17) Traveling or Slewing Indication

During traveling or slewing operation, the working alarm light flashes, and the buzzer tweets at the same time.

18) Function Lock

When the operator leaves his/her seat or the function locking level is not fixed in position, all other functional control levers will not function, so as to effectively prevent misoperation.

19) Automatic Reversing Travel

Whatever relative position upperworks and lowerworks are at, when the truck will travel forward when the traveling pedal is pushed forward and it will travel backward when the pedal is pulled backward.

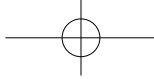
20) Monitoring Display

High-precision TFT display, and whole electric human-machine dialog display terminal for the machine could indicate the operating state and realtime parameters of engine system, hydraulic system, and electric system.

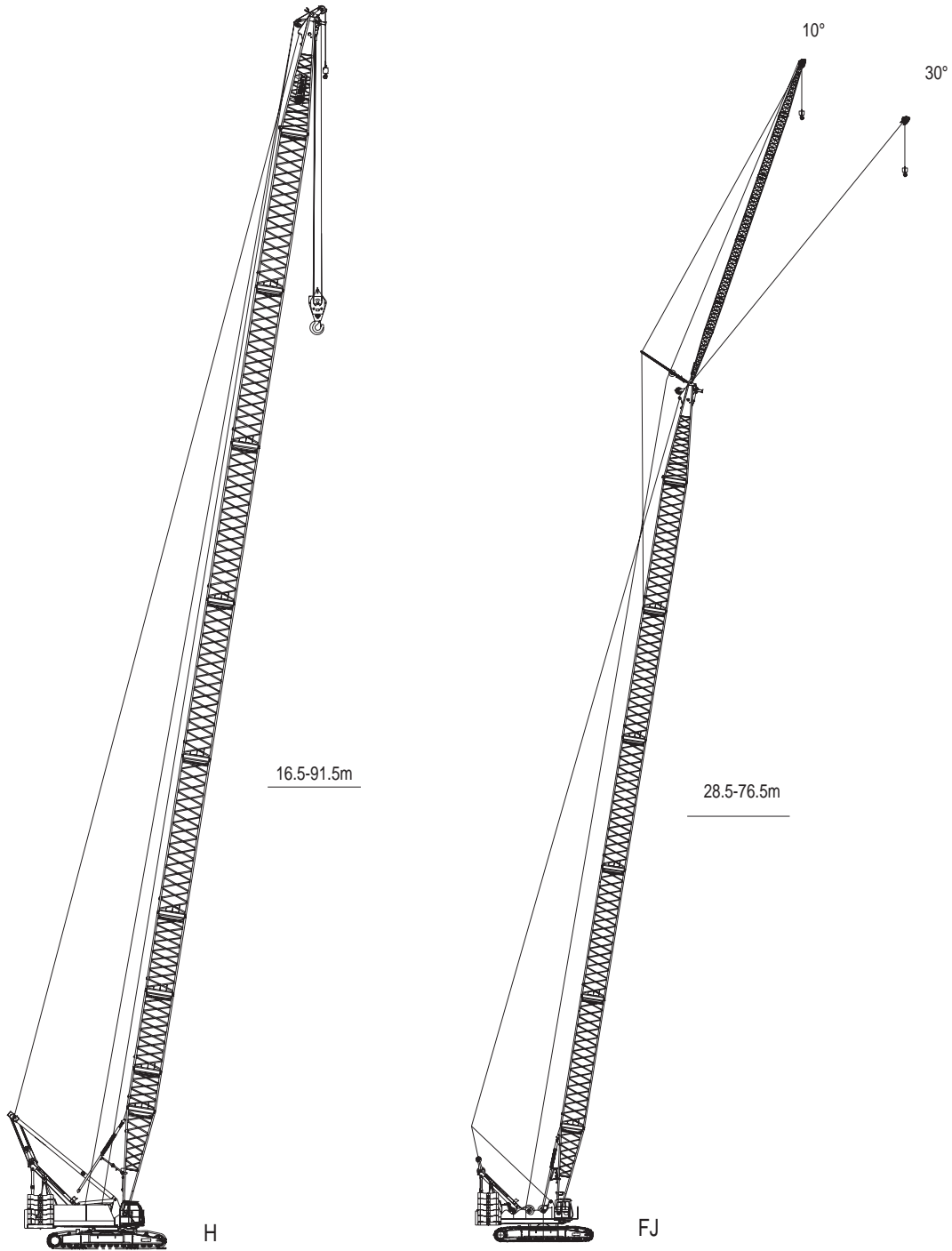


SCC2500C

22	Operating Condition Combination
25	H Operating Condition of Boom
31	FJ Operating Condition of Fixed Jib
37	LJ Operating Condition of Luffing Jib
95	SF _H Operating Condition of Heavy-duty Fixed Short Jib

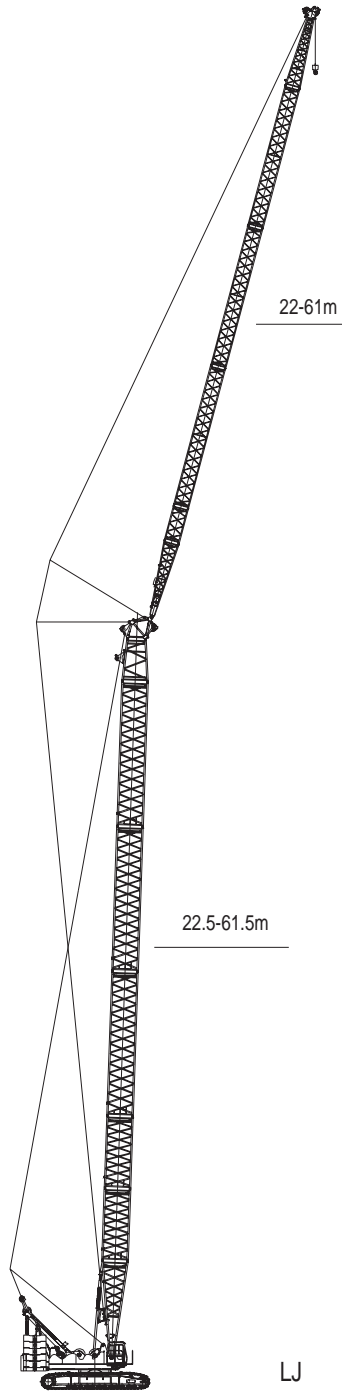


OPERATING CONDITION COMBINATION



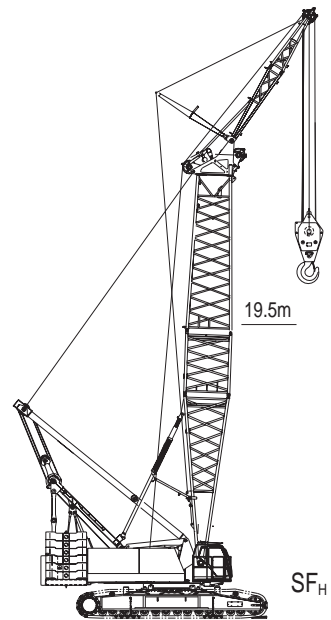
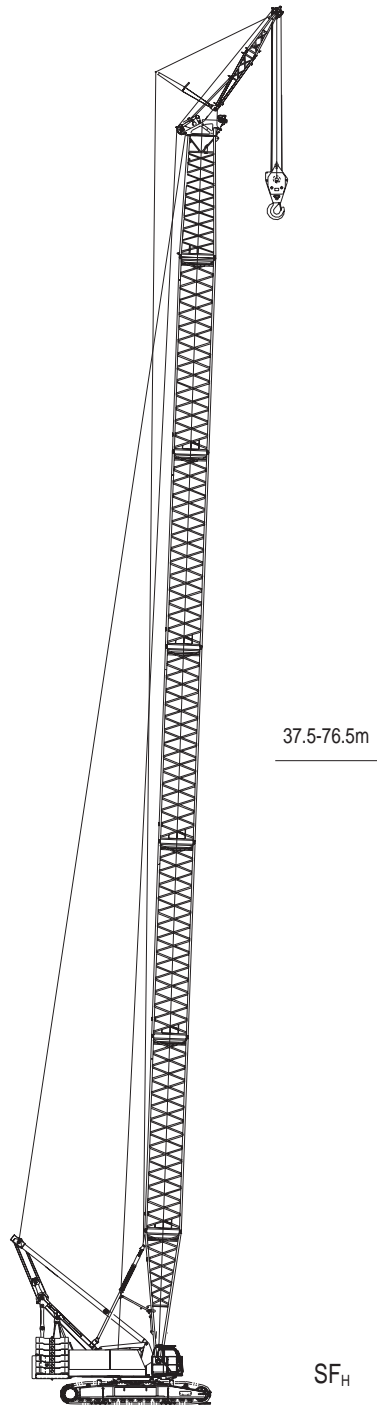


OPERATING CONDITION COMBINATION





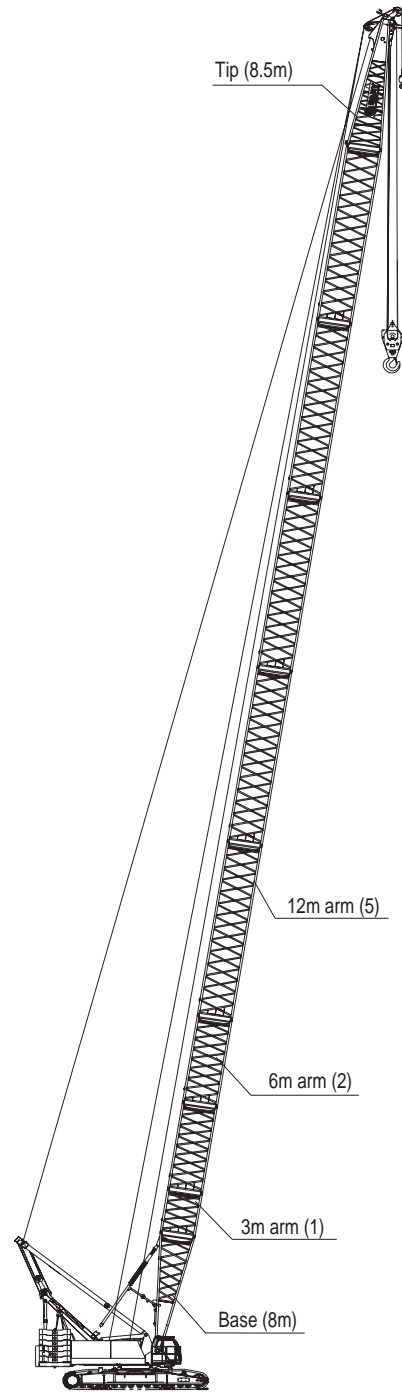
OPERATING CONDITION COMBINATION





BOOM H OPERATION CONDITION

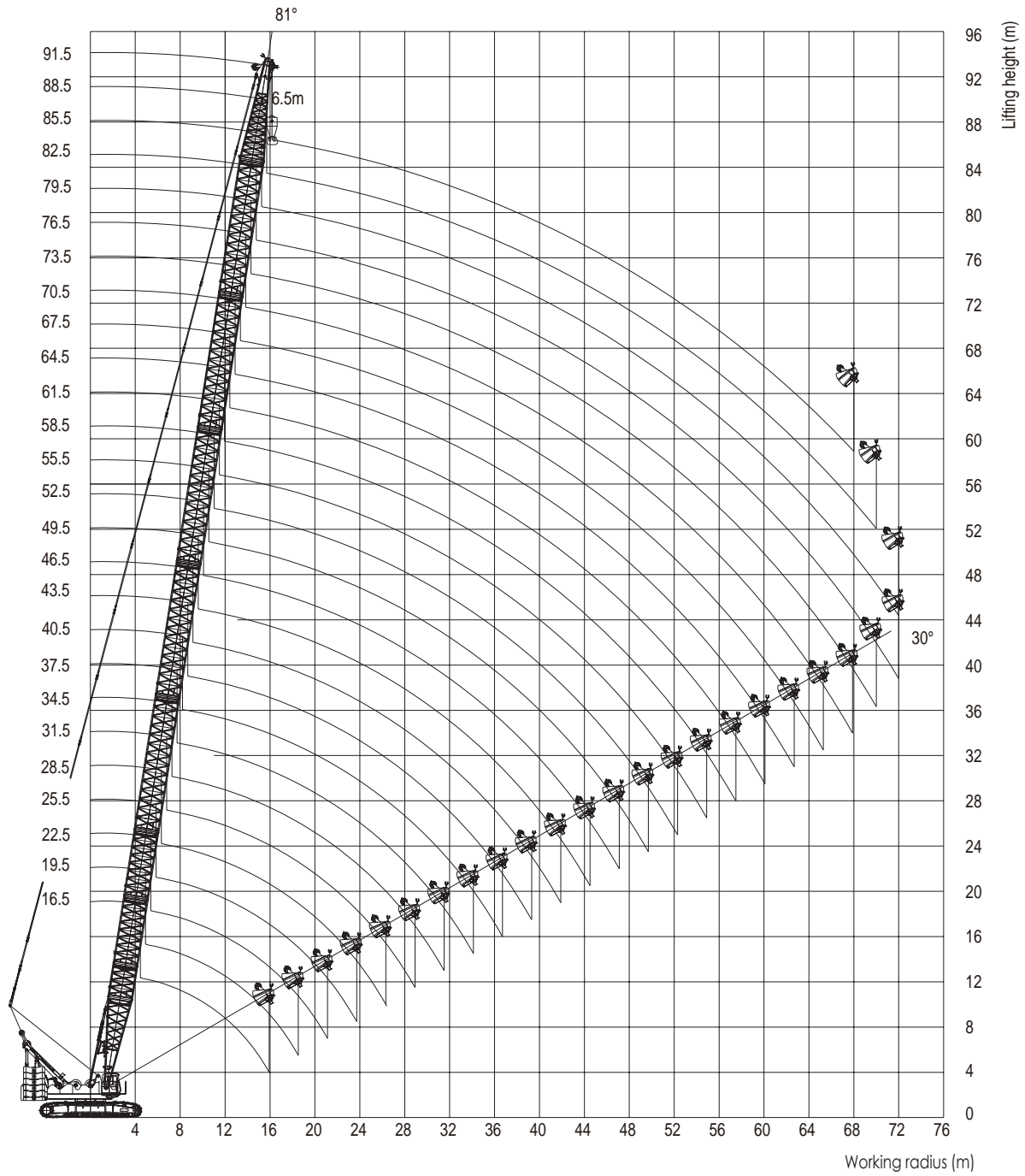
Boom length	Insert		
	m	3 m	6 m
16.5	-	-	-
19.5	1	-	-
22.5	-	1	-
25.5	1	1	-
28.5	-	-	1
31.5	1	-	1
34.5	-	1	1
37.5	1	1	1
40.5	-	-	2
43.5	1	-	2
46.5	-	1	2
49.5	1	1	2
52.5	-	-	3
55.5	1	-	3
58.5	-	1	3
61.5	1	1	3
64.5	-	-	4
67.5	1	-	4
70.5	-	1	4
73.5	1	1	4
76.5	-	-	5
79.5	1	-	5
82.5	-	1	5
85.5	1	1	5
88.5	-	2	5
91.5	1	2	5



Boom combination (16.5m-91.5m)



H OPERATION CONDITION RANGE DIAGRAM



Working range curve

H OPERATION CONDITION LOAD CHARTS

SCC2500C Boom Load Chart (without extension boom, but including standard counterweight and additional counterweight)

Unit: (t)

Radius (m)	Boom length (m)													Radius (m)
	16.5	19.5	22.5	25.5	28.5	31.5	34.5	37.5	40.5	43.5	46.5	49.5		
4	4.8/260													4
5	250.0	250.0	5.4/235											5
6	239.8	224.9	222.3	5.9/221.8	6.6/203.8									6
7	206.1	202.0	204.0	200.9	189.5	7.1/171	7.7/162							7
8	176.3	176.0	174.8	171.0	166.8	160.0	153.9	8.2/150	8.7/138.9					8
9	153.9	153.3	151.8	148.7	143.8	140.5	135.2	134.8	127.2	9.2/120.2	9.8/113.2			9
10	136.3	135.9	135.2	131.3	127.4	124.0	121.5	120.0	119.5	110.7	110.1	10.3/105.1	10.3/105.1	10
12	106.6	106.5	106.2	106.0	103.4	103.5	102.0	99.6	97.7	97.6	95.6	87.2	87.2	12
14	85.6	85.6	85.4	85.3	85.0	84.6	83.0	82.6	82.2	81.4	80.2	74.1	74.1	14
16	15.9/59.8	71.2	71.0	71.0	70.7	70.4	70.4	69.8	69.7	69.3	68.7	64.2	67.0	16
18		60.5	60.4	60.5	60.3	60.0	60.0	59.7	59.3	58.8	58.7	56.3	58.8	18
20		18.5/55.2	52.4	52.3	52.2	52.1	52.0	52.0	51.7	51.6	50.9	50.0	52.2	20
22			21.1/45.4	46.0	45.9	45.6	45.7	45.4	45.5	45.2	45.1	44.3	46.3	22
24				23.7/40.8	40.7	40.5	40.5	40.4	40.4	40.1	40.1	39.2	41.0	24
26					36.4	36.8	36.3	36.0	36.1	35.8	35.6	35.0	36.7	26
28					26.3/34.4	33.4	32.7	32.5	32.5	32.2	32.2	31.5	33.0	28
30						28.9/30.2	29.8	29.5	29.4	29.2	29.0	28.4	29.9	30
32							31.5/27.2	27.1	27.0	26.5	26.3	25.8	27.2	32
34								24.7	24.5	24.2	24.0	23.5	24.8	34
36									22.5	22.1	22.0	21.5	22.7	36
38									36.7/20.9	21.1	20.3	19.7	20.8	38
40										39.3/20.5	19.2	18.1	19.2	40
42											41.9/17.2	16.7	17.7	42
44												15.4	16.3	44
46												44.5/14.4	44.5/15.8	46
48														48
50														50
52														52
54														54
Counterweight (m)	85.2	85.2	85.2	85.2	85.2	85.2	85.2	85.2	85.2	85.2	85.2	85.2	85.2+5.8	Counterweight (m)

Notes: The 40% orange and italic parts in the table indicate the rated loads with additional counterweight, the values of 25% orange and italic parts depend on the boom strength.

Description: 1. The actual lifting capacity is the rated lifting capacity minus the weight of lifting hook, wire rope and all lifting appliances.
2. The rated lifting capacity shown in the table is the value when the weight is hoisted slowly and stably on a level and hard ground without traveling.

H OPERATION CONDITION LOAD CHARTS

SCC2500C Boom Load Chart (without extension boom, but including standard counterweight and additional counterweight)

Unit: (t)

Radius (m)	Boom length (m)												Radius (m)
	52.5	55.5	58.5	61.5	64.5	67.5	67.5	64.5	61.5	58.5	55.5	52.5	
8													8
9													9
10	10.8/100.5	<i>10.8/100.5</i>	11.4/89.4	<i>11.4/89.4</i>	11.9/84.5	<i>11.9/84.5</i>							10
12	85.1	<i>85.1</i>	83.1	<i>83.1</i>	81.2	<i>81.2</i>	12.4/81.5	<i>12.4/81.5</i>	12.9/76.0	<i>12.9/76.0</i>	13.5/70.9	<i>13.5/70.9</i>	12
14	72.5	<i>72.5</i>	70.9	<i>70.9</i>	69.4	<i>69.4</i>	67.9	<i>67.9</i>	66.4	<i>66.4</i>	64.9	<i>64.9</i>	14
16	62.8	<i>65.5</i>	61.4	<i>64.1</i>	60.2	<i>60.2</i>	59.0	<i>59.0</i>	57.7	<i>57.7</i>	56.4	<i>56.4</i>	16
18	55.1	<i>57.6</i>	54.0	<i>56.4</i>	53.0	<i>55.4</i>	51.8	<i>54.2</i>	50.7	<i>53.1</i>	49.6	<i>51.9</i>	18
20	48.9	<i>51.2</i>	47.9	<i>50.1</i>	47.0	<i>49.2</i>	46.0	<i>48.2</i>	45.0	<i>47.2</i>	44.1	<i>46.2</i>	20
22	43.8	<i>45.8</i>	42.8	<i>44.9</i>	42.1	<i>44.1</i>	41.2	<i>43.2</i>	40.3	<i>42.2</i>	39.4	<i>41.3</i>	22
24	38.9	<i>40.7</i>	38.6	<i>40.4</i>	37.9	<i>39.8</i>	37.1	<i>38.9</i>	36.3	<i>38.1</i>	35.5	<i>37.2</i>	24
26	34.7	<i>36.4</i>	34.4	<i>36.0</i>	34.2	<i>35.8</i>	33.6	<i>35.3</i>	32.8	<i>34.5</i>	32.1	<i>33.7</i>	26
28	31.2	<i>32.7</i>	30.8	<i>32.4</i>	30.6	<i>32.2</i>	30.3	<i>31.8</i>	29.8	<i>31.4</i>	29.1	<i>30.7</i>	28
30	28.1	<i>29.6</i>	27.8	<i>29.2</i>	27.6	<i>29.0</i>	27.3	<i>28.7</i>	27.0	<i>28.4</i>	26.5	<i>28.0</i>	30
32	25.5	<i>26.9</i>	25.2	<i>26.5</i>	25.0	<i>26.3</i>	24.7	<i>26.0</i>	24.4	<i>25.7</i>	24.0	<i>25.4</i>	32
34	23.3	<i>24.5</i>	22.9	<i>24.2</i>	22.7	<i>24.0</i>	22.4	<i>23.7</i>	22.1	<i>23.3</i>	21.8	<i>23.0</i>	34
36	21.2	<i>22.4</i>	20.9	<i>22.1</i>	20.7	<i>21.9</i>	20.4	<i>21.6</i>	20.1	<i>21.3</i>	19.8	<i>20.9</i>	36
38	19.5	<i>20.6</i>	19.1	<i>20.2</i>	19.0	<i>20.1</i>	18.6	<i>19.7</i>	18.3	<i>19.4</i>	18.0	<i>19.1</i>	38
40	17.9	<i>18.9</i>	17.5	<i>18.6</i>	17.4	<i>18.4</i>	17.0	<i>18.1</i>	16.7	<i>17.8</i>	16.4	<i>17.4</i>	40
42	16.4	<i>17.4</i>	16.1	<i>17.1</i>	15.9	<i>16.9</i>	15.6	<i>16.6</i>	15.3	<i>16.3</i>	15.0	<i>16.0</i>	42
44	15.1	<i>16.0</i>	14.8	<i>15.7</i>	14.6	<i>15.6</i>	14.3	<i>15.3</i>	14.0	<i>14.9</i>	13.7	<i>14.6</i>	44
46	13.9	<i>14.8</i>	13.6	<i>14.5</i>	13.5	<i>14.3</i>	13.1	<i>14.0</i>	12.8	<i>13.7</i>	12.5	<i>13.4</i>	46
48	47.1/12.2	<i>47.1/13.6</i>	12.5	<i>13.4</i>	12.4	<i>13.2</i>	12.1	<i>12.9</i>	11.8	<i>12.6</i>	11.4	<i>12.3</i>	48
50			49.7/11.1	<i>49.7/12.1</i>	11.4	<i>12.2</i>	11.1	<i>11.9</i>	10.8	<i>11.6</i>	10.4	<i>11.3</i>	50
52					10.5	<i>11.2</i>	10.2	<i>10.9</i>	9.9	<i>10.6</i>	9.5	<i>10.3</i>	52
54					52.3/9.3	<i>52.3/10.4</i>	9.3	<i>10.1</i>	9.0	<i>9.8</i>	8.7	<i>9.4</i>	54
56							54.9/8.1	<i>54.9/8.9</i>	8.3	<i>9.0</i>	8.0	<i>8.6</i>	56
58									57.5/7.2	<i>57.5/8.0</i>	7.4	<i>7.9</i>	58
60											59.9/6.6	<i>59.9/7.0</i>	60
Counterweight (m)	85.2	85.2+5.8	85.2	85.2+5.8	85.2	85.2+5.8	85.2	85.2+5.8	85.2	85.2+5.8	85.2	85.2+5.8	Counterweight (m)

Notes: The 40% orange and italic parts in the table indicate the rated loads with additional counterweight, the values of 25% orange and italic parts depend on the boom strength.

Description: 1. The actual lifting capacity is the rated lifting capacity minus the weight of lifting hook, wire rope and all lifting appliances.
 2. The rated lifting capacity shown in the table is the value when the weight is hoisted slowly and stably on a level and hard ground without traveling.

H OPERATION CONDITION LOAD CHARTS

SCC2500C Boom Load Chart (without extension boom, but including standard counterweight and additional counterweight)

Unit: (t)

Radius (m)	Boom length (m)												Radius (m)	
	70.5	73.5	76.5	79.5	82.5	85.5	70.5	73.5	76.5	79.5	82.5	85.5		
12														12
14	63.5	<i>63.5</i>	14.5/59.0	<i>14.5/59.0</i>	15.1/53.6	<i>15.1/53.6</i>	15.6/46.7	<i>15.6/46.7</i>						14
16	55.3	<i>55.3</i>	54.1	<i>54.1</i>	52.2	<i>52.2</i>	46.4	<i>46.4</i>	16.1/46.1	<i>16.1/46.1</i>	16.6/40.9	<i>16.6/40.9</i>		16
18	48.7	<i>50.9</i>	47.6	<i>49.9</i>	46.6	<i>46.6</i>	44.8	<i>44.8</i>	42.3	<i>42.3</i>	39.6	<i>39.6</i>		18
20	43.2	<i>45.3</i>	42.3	<i>44.3</i>	41.3	<i>43.4</i>	40.4	<i>42.4</i>	39.6	<i>39.6</i>	39.3	<i>39.3</i>		20
22	38.6	<i>40.6</i>	37.8	<i>39.7</i>	36.9	<i>38.8</i>	36.1	<i>38.0</i>	35.3	<i>37.2</i>	36.4	<i>36.4</i>		22
24	34.8	<i>36.5</i>	34.0	<i>35.7</i>	33.2	<i>34.9</i>	32.4	<i>34.1</i>	31.7	<i>33.4</i>	31.0	<i>32.7</i>		24
26	31.4	<i>33.1</i>	30.7	<i>32.3</i>	30.0	<i>31.6</i>	29.2	<i>30.8</i>	28.6	<i>30.2</i>	27.9	<i>29.5</i>		26
28	28.5	<i>30.1</i>	27.8	<i>29.4</i>	27.1	<i>28.6</i>	26.4	<i>27.9</i>	25.8	<i>27.3</i>	25.2	<i>26.7</i>		28
30	26.0	<i>27.4</i>	25.3	<i>26.7</i>	24.7	<i>26.1</i>	24.0	<i>25.4</i>	23.4	<i>24.8</i>	22.8	<i>24.2</i>		30
32	23.7	<i>25.1</i>	23.1	<i>24.4</i>	22.5	<i>23.8</i>	21.8	<i>23.2</i>	21.3	<i>22.6</i>	20.7	<i>22.0</i>		32
34	21.5	<i>22.8</i>	21.1	<i>22.4</i>	20.5	<i>21.8</i>	19.9	<i>21.1</i>	19.4	<i>20.6</i>	18.8	<i>20.0</i>		34
36	19.5	<i>20.7</i>	19.2	<i>20.4</i>	18.7	<i>19.9</i>	18.1	<i>19.3</i>	17.7	<i>18.8</i>	17.1	<i>18.3</i>		36
38	17.8	<i>18.9</i>	17.4	<i>18.5</i>	17.1	<i>18.2</i>	16.6	<i>17.7</i>	16.1	<i>17.2</i>	15.5	<i>16.7</i>		38
40	16.2	<i>17.2</i>	15.9	<i>16.9</i>	15.5	<i>16.6</i>	15.1	<i>16.2</i>	14.7	<i>15.8</i>	14.1	<i>15.2</i>		40
42	14.8	<i>15.7</i>	14.4	<i>15.4</i>	14.1	<i>15.1</i>	13.8	<i>14.7</i>	13.4	<i>14.4</i>	12.9	<i>13.9</i>		42
44	13.5	<i>14.4</i>	13.1	<i>14.1</i>	12.8	<i>13.7</i>	12.5	<i>13.4</i>	12.2	<i>13.2</i>	11.7	<i>12.7</i>		44
46	12.3	<i>13.2</i>	12.0	<i>12.9</i>	11.6	<i>12.5</i>	11.3	<i>12.2</i>	11.1	<i>11.9</i>	10.6	<i>11.6</i>		46
48	11.2	<i>12.1</i>	10.9	<i>11.7</i>	10.6	<i>11.4</i>	10.2	<i>11.1</i>	10.0	<i>10.8</i>	9.6	<i>10.5</i>		48
50	10.2	<i>11.0</i>	9.9	<i>10.7</i>	9.6	<i>10.4</i>	9.2	<i>10.1</i>	9.0	<i>9.8</i>	8.7	<i>9.5</i>		50
52	9.3	<i>10.1</i>	9.0	<i>9.8</i>	8.7	<i>9.5</i>	8.3	<i>9.1</i>	8.1	<i>8.9</i>	7.8	<i>8.5</i>		52
54	8.5	<i>9.2</i>	8.2	<i>8.9</i>	7.9	<i>8.6</i>	7.6	<i>8.3</i>	7.3	<i>8.0</i>	7.0	<i>7.7</i>		54
56	7.7	<i>8.4</i>	7.4	<i>8.1</i>	7.2	<i>7.8</i>	6.9	<i>7.5</i>	6.6	<i>7.2</i>	6.4	<i>6.9</i>		56
58	7.1	<i>7.7</i>	6.8	<i>7.4</i>	6.5	<i>7.0</i>	6.2	<i>6.7</i>	6.0	<i>6.5</i>	5.7	<i>6.1</i>		58
60	6.5	<i>7.0</i>	6.2	<i>6.7</i>	6.0	<i>6.3</i>	5.7	<i>6.0</i>	5.4	<i>5.8</i>	5.1	<i>5.4</i>		60
62	5.9	<i>6.3</i>	5.7	<i>6.0</i>	5.4	<i>5.7</i>	5.1	<i>5.4</i>	4.8	<i>5.1</i>	4.6	<i>4.8</i>		62
64	62.7/5.3	<i>62.7/6.0</i>	5.1	<i>5.4</i>	4.9	<i>5.2</i>	4.6	<i>4.9</i>	4.3	<i>4.5</i>	4.0	<i>4.3</i>		64
66			65.3/4.5	<i>65.3/4.9</i>	4.4	<i>4.7</i>	4.1	<i>4.4</i>	3.8	<i>4.1</i>	3.5	<i>3.8</i>		66
68					67.9/4.1	<i>67.9/4.3</i>	3.7	<i>3.9</i>	3.3	<i>3.6</i>	3.1	<i>3.3</i>		68
70							3.5	<i>3.5</i>	2.9	<i>3.2</i>	2.7	<i>2.9</i>		70
72									2.5	<i>2.8</i>	2.3	<i>2.5</i>		72
Counterweight (m)	85.2	85.2+5.8	85.2	85.2+5.8	85.2	85.2+5.8	85.2	85.2+5.8	85.2	85.2+5.8	85.2	85.2+5.8	Counterweight (m)	

Notes: The 40% orange and italic parts in the table indicate the rated loads with additional counterweight, the values of 25% orange and italic parts depend on the boom strength.

Description: 1. The actual lifting capacity is the rated lifting capacity minus the weight of lifting hook, wire rope and all lifting appliances.
2. The rated lifting capacity shown in the table is the value when the weight is hoisted slowly and stably on a level and hard ground without traveling.

H OPERATION CONDITION LOAD CHARTS

SCC2500C Boom Load Chart (without extension boom, but including standard counterweight and additional counterweight)

Unit: (t)

Radius (m)	Boom length (m)				Radius (m)
	88.5		91.5		
12					12
14					14
16	17.2/34.4	<i>17.2/34.4</i>	17.7/33.1	<i>17.7/33.1</i>	16
18	33.4	<i>33.4</i>	30.9	<i>30.8</i>	18
20	32.2	<i>32.2</i>	29.9	<i>29.9</i>	20
22	30.1	<i>30.1</i>	28.3	<i>28.3</i>	22
24	28.9	<i>28.9</i>	27.1	<i>27.1</i>	24
26	27.7	<i>27.7</i>	25.1	<i>25.1</i>	26
28	24.5	<i>26.0</i>	24.8	<i>24.8</i>	28
30	22.1	<i>22.5</i>	22.9	<i>22.9</i>	30
32	20.1	<i>21.4</i>	19.5	<i>20.0</i>	32
34	18.2	<i>18.5</i>	17.6	<i>18.1</i>	34
36	16.5	<i>16.8</i>	15.9	<i>16.4</i>	36
38	15.0	<i>15.3</i>	14.5	<i>14.9</i>	38
40	13.6	<i>13.9</i>	13.1	<i>13.5</i>	40
42	12.3	<i>12.7</i>	11.9	<i>12.3</i>	42
44	11.2	<i>11.6</i>	10.8	<i>11.2</i>	44
46	10.1	<i>10.5</i>	9.8	<i>10.1</i>	46
48	9.1	<i>9.5</i>	8.8	<i>9.2</i>	48
50	8.2	<i>8.6</i>	7.9	<i>8.3</i>	50
52	7.4	<i>7.8</i>	7.1	<i>7.5</i>	52
54	6.7	<i>7.0</i>	6.4	<i>6.7</i>	54
56	6.0	<i>6.3</i>	5.7	<i>6.0</i>	56
58	5.3	<i>5.6</i>	5.1	<i>5.4</i>	58
60	4.8	<i>5.0</i>	4.5	<i>4.7</i>	60
62	4.2	<i>4.5</i>	3.9	<i>4.2</i>	62
64	3.7	<i>4.0</i>	3.4	<i>3.7</i>	64
66	3.2	<i>3.5</i>	2.9	<i>3.1</i>	66
68	2.7	<i>3.0</i>	2.4	<i>2.7</i>	68
70	2.4	<i>2.6</i>			70
Counterweight (m)	85.2	85.2+5.8	85.2	85.2+5.8	Counterweight (m)

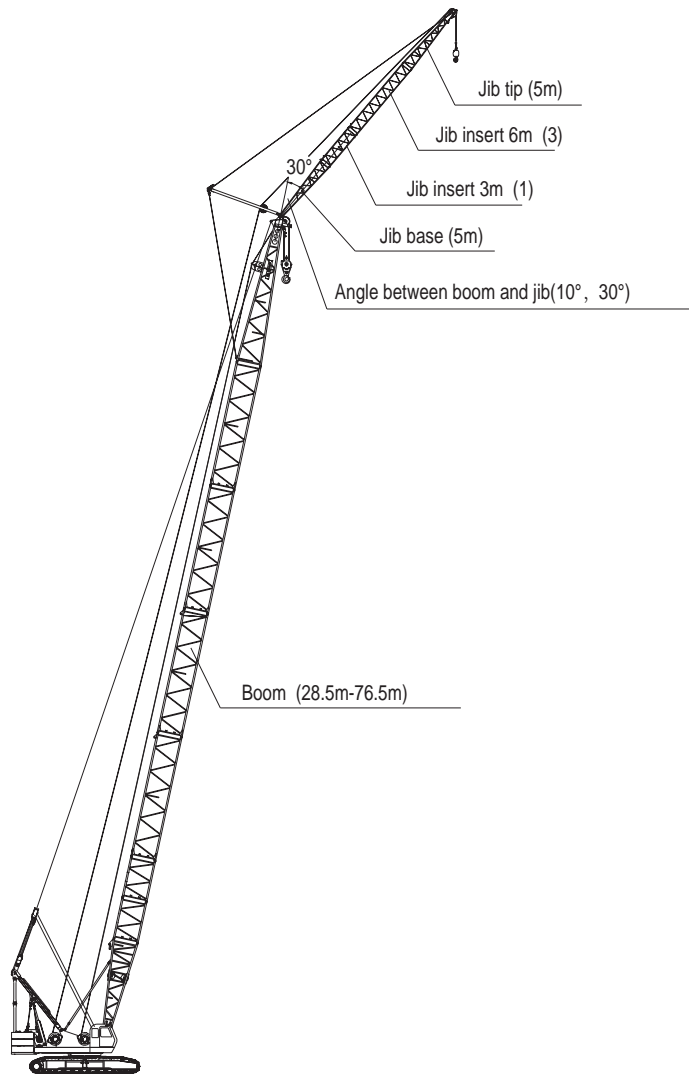
Notes: The 40% orange and italic parts in the table indicate the rated loads with additional counterweight, the values of 25% orange and italic parts depend on the boom strength.

Description: 1. The actual lifting capacity is the rated lifting capacity minus the weight of lifting hook, wire rope and all lifting appliances.
 2. The rated lifting capacity shown in the table is the value when the weight is hoisted slowly and stably on a level and hard ground without traveling.

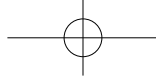


FIXED JIB OPERATION CONDITION

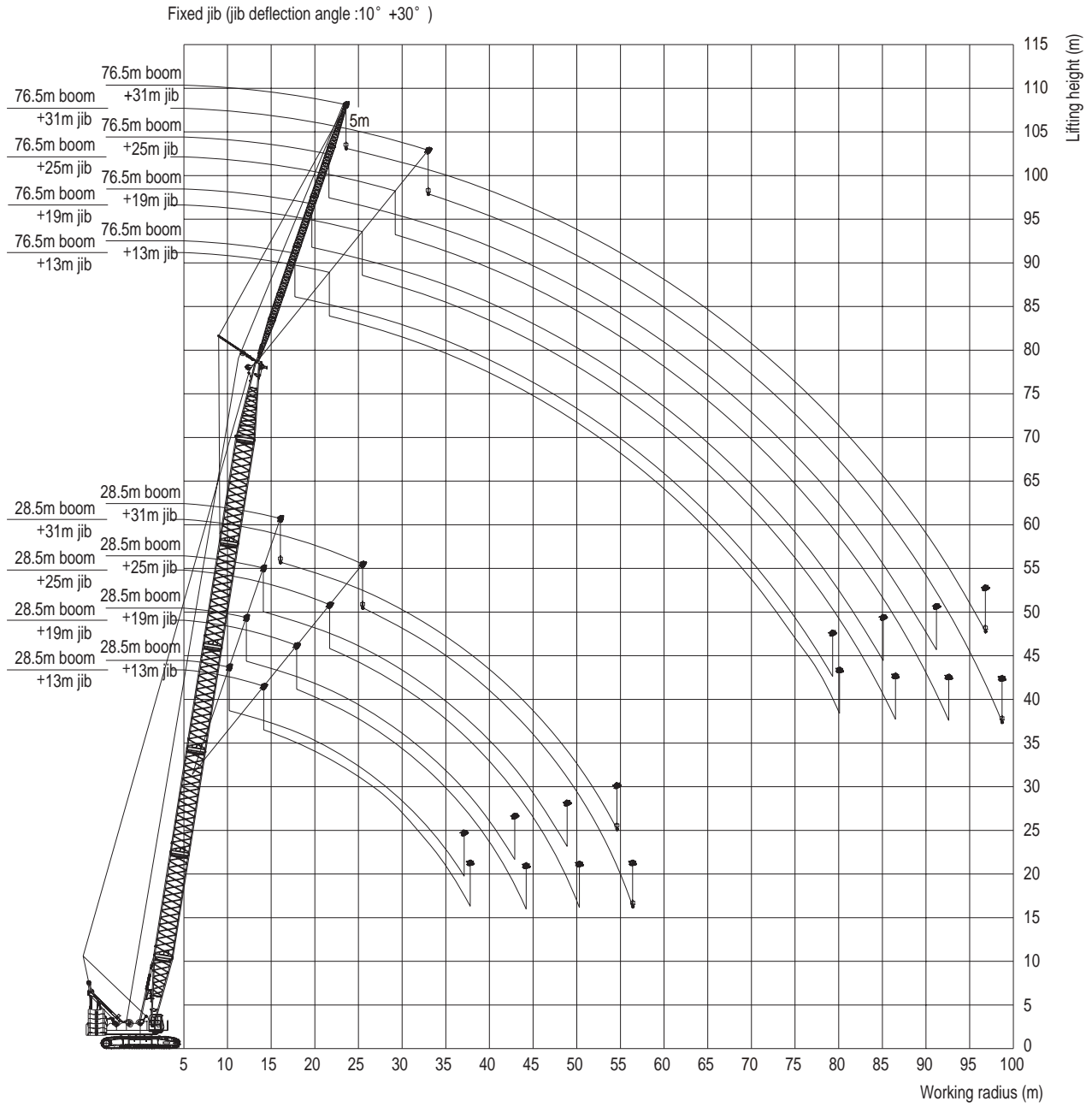
Jib length (m)	Insert		Boom length (m)	Included angle between boom and jib
	3 m	6 m		
13	1	-	28.5~76.5	10° , 30°
19	1	1	28.5~76.5	10° , 30°
25	1	2	28.5~76.5	10° , 30°
31	1	3	28.5~76.5	10° , 30°



Fixed jib combination (13m, 19m, 25m, and 31m)



FIXED JIB RANGE DIAGRAM



FIXED JIB LOAD CHARTS

Load Chart of SCC2500C Fixed Jib Operating Condition (without main hook, counterweight 85.2+5.8t)

No main hook, jib deflection angle: 10°

Unit: (t)

Boom length (m)		28.5				40.5				52.5				Boom length (m)	
Jib length (m) Radius(m)	13	19	25	31	13	19	25	31	13	19	25	31	Jib length (m) Radius(m)		
10	10.4/27.3												10		
12	26.0	12.3/22.0			12.2/27.3								12		
14	24.8	20.8	14.3/12.3		26.3	14.2/22.1			14.1/27.3				14		
16	23.5	19.7	12.0	16.2/7.0	25.3	21.0	16.2/12.5		26.4	16.1/22.0			16		
18	22.2	18.8	11.4	6.6	24.4	20.1	12.0	18.1/7.9	25.6	21.1	12.5		18		
20	21.1	17.9	10.9	6.3	23.6	19.3	11.6	6.7	24.9	20.3	12.1	7.0	20		
22	20.2	17.1	10.5	6.0	22.7	18.6	11.2	6.4	24.0	19.7	11.7	6.7	22		
24	19.3	16.4	10.1	5.7	21.9	17.9	10.8	6.1	23.3	19.0	11.3	6.4	24		
26	18.5	15.7	9.6	5.4	21.2	17.2	10.4	5.9	22.5	18.5	11.0	6.2	26		
28	17.6	14.6	9.3	5.2	20.4	16.7	10.1	5.6	21.9	17.9	10.7	6.0	28		
30	17.0	13.7	8.9	5.0	19.8	16.2	9.8	5.4	21.3	17.3	10.4	5.8	30		
32	16.4	12.9	8.6	4.8	19.1	15.5	9.4	5.2	20.7	16.9	10.1	5.6	32		
34	15.8	12.1	8.3	4.6	18.4	14.7	9.1	5.0	20.1	16.4	9.8	5.4	34		
36	15.2	11.5	8.0	4.4	17.6	13.9	8.9	4.9	19.6	16.0	9.5	5.2	36		
38	37.1/14.8	10.9	7.8	4.2	17.0	13.3	8.6	4.7	18.1	15.4	9.3	5.1	38		
40		10.5	7.4	4.0	16.4	12.6	8.4	4.5	16.7	14.7	9.0	4.9	40		
42		10.0	7.2	3.9	15.8	12.0	8.1	4.4	15.5	14.1	8.8	4.8	42		
44		42.9/9.9	7.0	3.7	15.2	11.6	7.9	4.2	14.4	13.5	8.6	4.6	44		
46			6.9	3.6	14.5	11.1	7.7	4.1	13.4	13.0	8.4	4.5	46		
48			6.7	3.4	47.7/13.5	10.7	7.4	3.9	12.4	12.4	8.2	4.3	48		
50			48.9/6.7	3.3		10.4	7.3	3.8	11.6	12.0	8.0	4.2	50		
52				3.2		10.0	7.1	3.7	10.9	11.3	7.8	4.1	52		
54				3.1		53.4/9.8	7.0	3.6	10.2	10.6	7.7	4.0	54		
56				54.6/3.1			6.8	3.5	9.6	10.0	7.4	3.9	56		
58							6.7	3.4	9.0	9.4	7.3	3.8	58		
60							59.4/6.6	3.3	58.3/8.9	8.8	7.2	3.7	60		
62								3.2		8.3	7.0	3.6	62		
64								3.1		64.0/7.9	6.9	3.5	64		
66								65.2/3.1			6.8	3.4	66		
68											6.7	3.3	68		
70											70.0/6.6	3.3	70		
72												3.2	72		
74												3.1	74		
76												75.7/3.1	76		

Notes: The load values of 25% orange parts in the thick frames depend on the boom strength.

- Description:
1. The actual lifting capacity is the rated lifting capacity minus the weight of lifting hook, wire rope and all lifting appliances.
 2. The rated lifting capacity shown in the table is the value when the weight is hoisted slowly and stably on a level and hard ground without traveling.

FIXED JIB LOAD CHARTS

Load Chart of SCC2500C Fixed Jib Operating Condition (without main hook, counterweight 85.2+5.8t)

No main hook, jib deflection angle: 10°

Unit: (t)

Boom length (m)	64.5				76.5				Boom length (m)
Jib length (m) Radius (m)	13	19	25	31	13	19	25	31	Jib length (m) Radius(m)
16	27.3				17.3/27.3				16
18	26.5	22.0	19.9/12.5		27.2	19.8/22.0			18
20	25.8	21.1	12.4	21.7/6.9	26.6	21.8	21.8/12.5		20
22	25.2	20.5	12.1	6.9	26.0	21.2	12.4	23.7/6.8	22
24	24.6	19.9	11.8	6.7	25.4	20.6	12.1	6.9	24
26	24.0	19.4	11.5	6.5	24.9	20.1	11.8	6.7	26
28	23.5	18.8	11.2	6.3	24.4	19.6	11.5	6.5	28
30	22.8	18.4	10.9	6.1	22.1	19.1	11.3	6.3	30
32	22.1	17.9	10.6	5.9	20.3	18.7	11.0	6.1	32
34	20.2	17.4	10.4	5.7	18.7	18.3	10.8	6.0	34
36	18.5	17.0	10.1	5.5	17.2	17.9	10.5	5.8	36
38	16.9	16.6	9.9	5.4	15.8	16.2	10.3	5.7	38
40	15.6	16.0	9.6	5.2	14.5	15.0	10.1	5.5	40
42	14.4	14.8	9.4	5.1	13.3	13.8	9.9	5.4	42
44	13.3	13.8	9.2	5.0	12.1	12.6	9.7	5.2	44
46	12.2	12.8	9.0	4.8	11.1	11.6	9.5	5.1	46
48	11.3	11.8	8.8	4.7	10.2	10.7	9.3	5.0	48
50	10.5	10.9	8.6	4.6	9.4	9.9	9.0	4.9	50
52	9.8	10.2	8.4	4.5	8.7	9.1	8.9	4.7	52
54	9.1	9.5	8.2	4.3	8.0	8.4	8.7	4.6	54
56	8.4	8.9	8.1	4.2	7.2	7.8	8.4	4.5	56
58	7.9	8.3	7.9	4.1	6.6	7.1	7.8	4.4	58
60	7.2	7.7	7.8	4.0	6.1	6.5	7.1	4.3	60
62	6.7	7.1	7.7	3.9	5.6	6.0	6.6	4.2	62
64	6.2	6.6	7.1	3.8	5.1	5.5	6.1	4.1	64
66	5.8	6.2	6.7	3.7	4.7	5.1	5.6	4.0	66
68	5.4	5.8	6.3	3.7	4.2	4.6	5.2	3.9	68
70	68.8/5.2	5.4	5.8	3.6	3.8	4.2	4.8	3.9	70
72		5.0	5.5	3.5	3.5	3.9	4.4	3.8	72
74		4.7	5.1	3.4	3.1	3.5	4.1	3.7	74
76		74.6/4.6	4.8	3.4	2.8	3.2	3.7	3.6	76
78			4.4	3.3	2.4	2.9	3.4	3.6	78
80			4.1	3.2	79.3/2.2	2.6	3.1	3.4	80
82			80.5/4.1	3.2		2.2	2.8	3.1	82
84				3.1		1.9	2.4	2.8	84
86				3.1		85.1/1.8	2.2	2.6	86
88				86.3/3.1			1.9	2.2	88
90							1.7	2.0	90
92							91.1/1.5	1.7	92
94								1.5	94
96								1.3	96
98								96.8/1.2	98

Notes: The load values of 25% orange parts in the thick frames depend on the boom strength.

- Description:
1. The actual lifting capacity is the rated lifting capacity minus the weight of lifting hook, wire rope and all lifting appliances.
 2. The rated lifting capacity shown in the table is the value when the weight is hoisted slowly and stably on a level and hard ground without traveling.

FIXED JIB LOAD CHARTS

Load Chart of SCC2500C Fixed Jib Operating Condition (without main hook, counterweight 85.2+5.8t)

No main hook, jib deflection angle: 30°

Unit: (t)

Boom length (m)		28.5				40.5				52.5				Boom length (m)	
Jib length (m)	Radius (m)	13	19	25	31	13	19	25	31	13	19	25	31	Jib length (m)	Radius (m)
14	14.3/19.9													14	
16	19.1	18.1/13.8				16.2/19.8								16	
18	18.3	13.8				19.2	20.0/13.8					18.1/19.8		18	
20	17.1	13.8	21.9/8.4			18.8	13.8					19.3	21.8/13.8	20	
22	16.2	13.4	8.4			17.9	13.8	23.3/8.4				18.9	13.8	22	
24	15.5	12.9	8.1	25.6/4.3		17.1	13.5	8.3				18.4	13.8	24	25.6/8.4
26	14.8	12.2	7.8	4.2		16.4	13.3	8.1	27.5/4.3			17.6	13.6	26	8.3
28	14.2	11.6	7.5	4.1		15.8	12.8	7.9	4.2			17.0	13.4	28	8.1 29.4/4.3
30	13.7	11.1	7.3	3.9		15.2	12.2	7.7	4.1			16.5	13.2	30	8.0 4.2
32	13.2	10.6	7.1	3.8		14.8	11.8	7.4	3.9			16.0	12.6	32	7.8 4.1
34	13.0	10.2	6.9	3.6		14.3	11.3	7.3	3.8			15.5	12.2	34	7.5 4.0
36	12.8	9.9	6.7	3.5		13.9	11.0	7.1	3.7			15.1	11.9	36	7.4 3.9
38	37.8/12.4	9.6	6.6	3.4		13.6	10.6	6.9	3.6			14.7	11.5	38	7.2 3.8
40		9.4	6.4	3.3		13.3	10.3	6.8	3.5			14.4	11.2	40	7.1 3.7
42		9.2	6.3	3.2		13.1	10.1	6.7	3.4			14.0	10.9	42	7.0 3.6
44		9.1	6.3	3.1		12.9	9.8	6.6	3.3			13.8	10.6	44	6.9 3.5
46		44.2/9.1	6.2	3.0		12.6	9.6	6.5	3.2			13.5	10.4	46	6.8 3.4
48			6.2	2.9		12.6	9.4	6.4	3.2			12.8	10.2	48	6.7 3.3
50			6.2	2.9		48.4/12.6	9.3	6.3	3.1			11.9	9.9	50	6.6 3.3
52			50.3/6.2	2.8			9.2	6.2	3.0			11.1	9.7	52	6.5 3.2
54				2.8			9.1	6.2	3.0			10.4	9.6	54	6.4 3.1
56				2.8			54.8/9.1	6.2	2.9			9.7	9.4	56	6.3 3.1
58				56.4/2.8				6.2	2.8			9.1	9.3	58	6.3 3.0
60								6.2	2.8			59.0/8.8	9.2	60	6.2 3.0
62									60.9/6.2				8.6	62	6.2 2.9
64													8.1	64	6.1 2.9
66													65.4/7.7	66	6.1 2.9
68													67.0/2.8	68	6.1 2.8
70														70	6.1 2.8
72														72	71.5/6.1 2.8
74														74	2.8
76														76	2.8
78														78	77.6/2.8

Notes: The load values of 25% orange parts in the thick frames depend on the boom strength.

- Description:
1. The actual lifting capacity is the rated lifting capacity minus the weight of lifting hook, wire rope and all lifting appliances.
 2. The rated lifting capacity shown in the table is the value when the weight is hoisted slowly and stably on a level and hard ground without traveling.

FIXED JIB LOAD CHARTS

Load Chart of SCC2500C Fixed Jib Operating Condition (without main hook, counterweight 85.2+5.8t)

No main hook, jib deflection angle: 30°

Unit: (t)

Boom length (m)		64.5				76.5				Boom length (m)	
Jib length (m)	Radius (m)	13	19	25	31	13	19	25	31	Jib length (m)	Radius (m)
20		20.0/19.8				21.8/19.7					20
22		19.3	23.7/13.8			19.6					22
24		19.0	13.8			19.3	25.6/13.8				24
26		18.7	13.8	27.5/8.4		19.1	13.8				26
28		18.1	13.7	8.3		18.8	13.8	29.4/8.3			28
30		17.5	13.5	8.1	31.3/4.2	18.4	13.7	8.3			30
32		17.0	13.3	8.0	4.2	17.9	13.5	8.1	33.2/4.2		32
34		16.5	13.1	7.8	4.1	17.3	13.4	8.0	4.2		34
36		16.1	12.6	7.7	4.0	16.9	13.2	7.9	4.1		36
38		15.7	12.2	7.5	3.9	16.5	13.0	7.7	4.0		38
40		15.3	11.9	7.3	3.8	15.2	12.5	7.5	3.9		40
42		14.9	11.6	7.2	3.7	13.9	12.2	7.4	3.8		42
44		13.8	11.3	7.1	3.6	12.8	11.9	7.3	3.7		44
46		12.6	11.1	7.0	3.5	11.7	11.7	7.2	3.6		46
48		11.7	10.8	6.9	3.5	10.7	11.4	7.1	3.5		48
50		10.9	10.6	6.8	3.4	9.9	10.8	7.0	3.5		50
52		10.1	10.4	6.7	3.3	9.1	10.0	6.9	3.4		52
54		9.4	10.2	6.6	3.3	8.4	9.3	6.8	3.3		54
56		8.7	9.5	6.6	3.2	7.7	8.6	6.8	3.3		56
58		8.1	8.9	6.5	3.2	7.0	7.9	6.7	3.2		58
60		7.4	8.3	6.4	3.1	6.4	7.2	6.6	3.2		60
62		6.9	7.7	6.4	3.1	5.9	6.7	6.5	3.1		62
64		6.4	7.1	6.3	3.0	5.4	6.2	6.5	3.1		64
66		5.9	6.6	6.2	3.0	4.9	5.7	6.2	3.0		66
68		5.5	6.1	6.2	2.9	4.4	5.2	5.8	3.0		68
70		69.5/5.2	5.7	6.2	2.9	4.0	4.8	5.3	3.0		70
72			5.3	5.8	2.9	3.6	4.4	4.9	3.0		72
74			4.9	5.4	2.8	3.3	4.0	4.5	2.9		74
76			75.9/4.6	5.0	2.8	2.9	3.6	4.1	2.9		76
78				4.7	2.8	2.6	3.3	3.8	2.9		78
80				4.3	2.8	2.2	2.9	3.4	2.8		80
82				82.0/4.0	2.8	80.1/2.2	2.6	3.1	2.8		82
84					2.8		2.2	2.8	2.8		84
86					2.8		1.9	2.4	2.8		86
88					2.8		86.5/1.9	2.1	2.7		88
90					88.1/2.8			1.8	2.3		90
92								1.6	2.0		92
94								92.6/1.5	1.7		94
96									1.5		96
98									1.3		98
100									98.7/1.2		100

Notes: The load values of 25% orange parts in the thick frames depend on the boom strength.

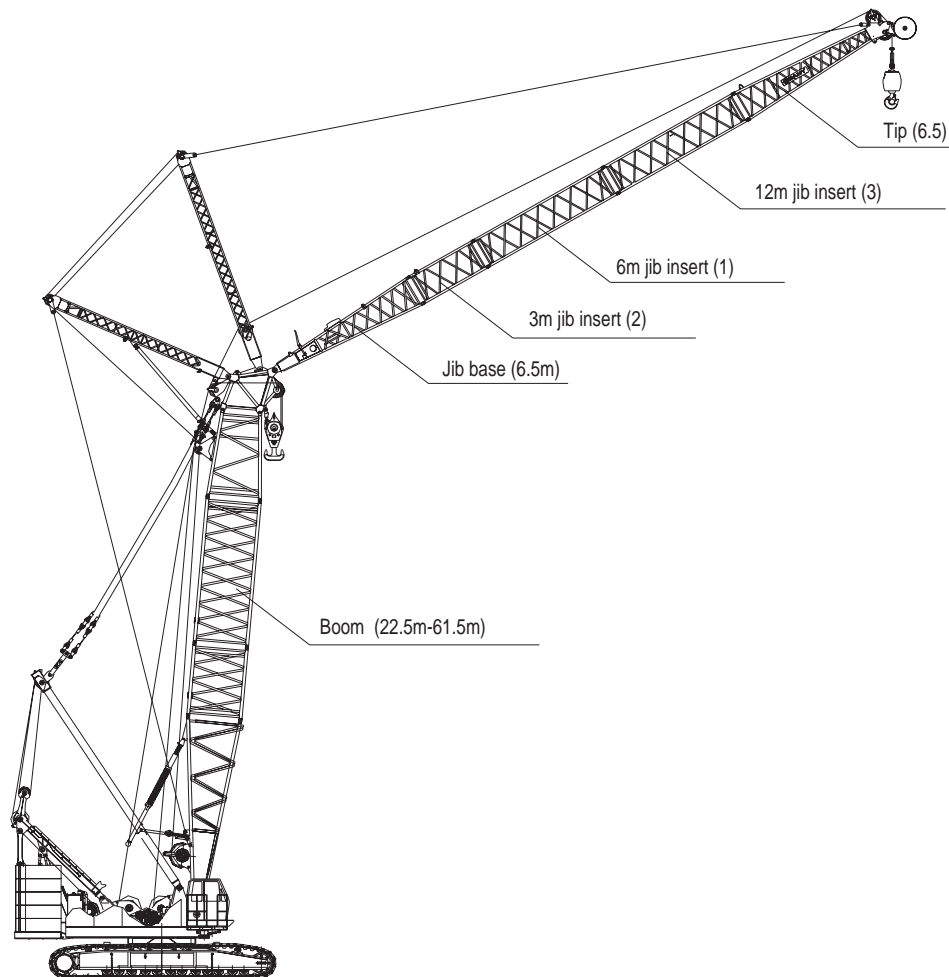
Description: 1. The actual lifting capacity is the rated lifting capacity minus the weight of lifting hook, wire rope and all lifting appliances.

2. The rated lifting capacity shown in the table is the value when the weight is hoisted slowly and stably on a level and hard ground without traveling.

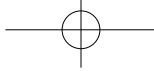


LUFFING JIB OPERATION CONDITION

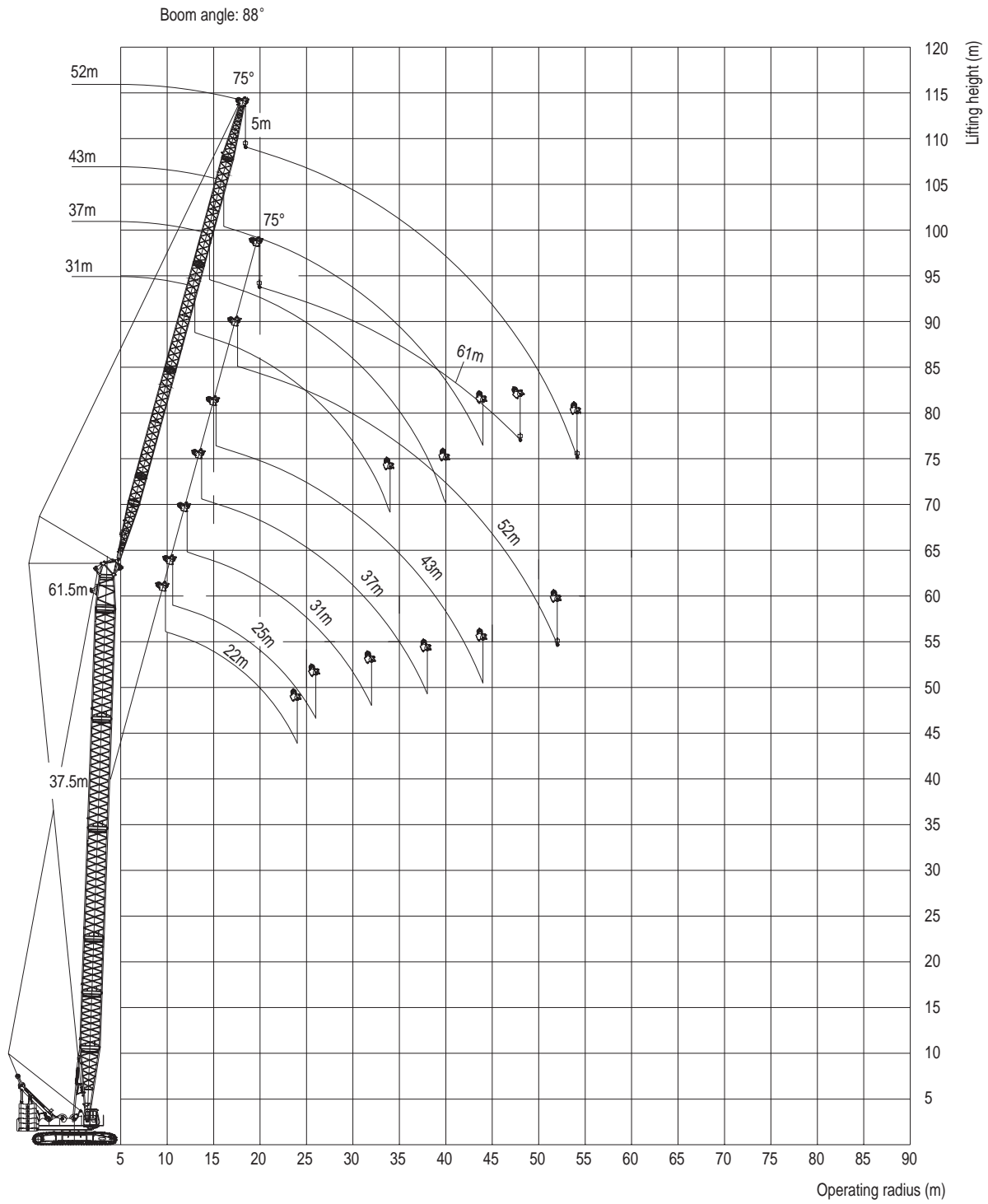
Jib length (m)	Insert			Boom length (m)	Angle between boom and jib
	3 m	6 m	12m		
22	1	1	–	22.5~58.5	63° ~88°
25	–	–	1	22.5~61.5	63° ~88°
31	–	1	1	22.5~61.5	63° ~88°
37	–	–	2	22.5~61.5	63° ~88°
43	–	1	2	22.5~61.5	63° ~88°
52	1	–	3	22.5~61.5	63° ~88°
61	2	1	3	22.5~52.5	63° ~88°



Luffing jib combination (22m, 25m, 31m, 37m, 43m, 52m, 61m)



LUFFING JIB RANGE DIAGRAM



LUFFING JIB LOAD CHARTS

Rated Load Chart of SCC2500D Luffing Jib (without main hook, counterweight 85.2+5.8t)

Unit: (t)

		22.5											
		25						28					
Boom length (m)	Jib length (m)	22	25	28	31	34	37	22	25	28	31	34	37
Boom length (m)	Jib length (m)	22	25	28	31	34	37	22	25	28	31	34	37
Boom angle (°)	Radius (m)	88	83	78	73	68	63	88	83	78	73	68	63
9.8	9.8	71.4											
10	10	70.7											
12	12	63.2						62.6					
14	14	55.9	60.4					56.2					
16	16	47.6	54.9					48.6	54.9				
18	18	40.1	47.4	48.3				41.0	48.3				
20	20	34.5	40.1	42.4				35.2	41.1	42.2			
22	22	29.7	34.5	36.7				30.8	35.4	37.4			
24	24		30.0	33.7	32.8	32.1		27.0	30.6	33.7	32.8		
26	26			30.0	29.9	29.0		24.2	27.3	30.3	29.6		
28	28			27.1	26.4	25.8		21.7	24.0	27.2	26.9	26.0	
30	30				24.3	23.7		19.7	22.0	24.2	24.0	24.7	23.9
32	32					21.8		17.6	19.8	21.6	22.2	21.3	22.0
34	34							16.7	18.1	19.6	20.6	20.1	20.4
36	36							15.6	17.0	18.4	19.2	18.7	18.6
38	38							14.5	16.0	17.3	17.9	17.4	17.3
40	40							13.4	15.0	16.2	16.6	16.2	16.2
42	42							12.3	14.0	15.2	15.5	15.2	15.2
44	44							11.2	13.0	14.2	14.5	14.2	14.2
46	46							10.1	12.0	13.2	13.5	13.2	13.2
48	48							9.0	11.0	12.2	12.5	12.2	12.2
50	50							8.0	10.0	11.2	11.5	11.2	11.2
52	52							7.0	9.0	10.2	10.5	10.2	10.2
54	54							6.0	8.0	9.2	9.5	9.2	9.2
56	56							5.0	7.0	8.2	8.5	8.2	8.2
58	58							4.0	6.0	7.2	7.5	7.2	7.2
60	60							3.0	5.0	6.2	6.5	6.2	6.2
68	68							2.0	4.0	5.2	5.5	5.2	5.2

Notes: The load values of 25% orange parts in the thick frames depend on the boom strength.

Description: 1. The actual lifting capacity is the rated lifting capacity minus the weight of lifting hook, wire rope and all lifting appliances.

2. The rated lifting capacity shown in the table is the value when the weight is hoisted slowly and stably on a level and hard ground without traveling.

3. The rated load is within 75% of the tipover load.

LUFFING JIB LOAD CHARTS

Rated Load Chart of SCC2500C Luffing Jib (without main hook, counterweight 85.2+5.8t)

Unit: (t)

		22.5										40										43											
		37										40										43											
		34										40										43											
Boom length (m)	Jib length (m)	88	83	78	73	68	63	58	53	48	43	88	83	78	73	68	63	58	53	48	43	88	83	78	73	68	63	58	53	48	43		
Boom angle (°)	Radius (m)																																
12	12																																
14	14	48.8																															
16	16	44.9																															
18	18	39.5	46.5																														
20	20	35.3	39.7																														
22	22	31.4	35.5																														
24	24	27.7	31.5	33.4																													
26	26	24.7	27.9	30.2																													
28	28	22.3	24.9	27.4	26.8																												
30	30	20.2	22.4	24.7	24.6																												
32	32	17.7	20.3	22.3	22.7	21.8																											
34	34	16.0	18.2	20.2	21.1	20.4																											
36	36		16.5	18.4	19.5	19.0	18.5	15.6	17.1	18.7	19.5	19.0																					
38	38			16.7	18.3	17.7	17.3	13.4	15.7	17.1	18.3	17.7	17.2	13.9	15.8	17.1	17.9	17.6															
40	40				17.0	16.6	16.2		14.0	15.7	17.1	16.6	16.1	12.1	14.3	15.7	16.9	16.5															
42	42					15.6	15.2			14.5	15.7	15.6	15.2		13.0	14.4	15.8	15.5	15.1														
44	44					14.3	14.3			14.5	14.7	14.3			13.0	14.6	14.5	14.2	10.5	12.5	13.4	14.7	14.4	14.1									
46	46									13.9	13.5				13.5	13.7	13.4		11.2	12.3	13.7	13.6	13.3	46									
48	48																		12.9	12.6				48									
50	50																							50									
52	52																							52									
54	54																							54									
56	56																							56									

LUFFING JIB LOAD CHARTS

Rated Load Chart of SCC2500C Luffing Jib (without main hook, counterweight 85.2+5.8t)

		22.5												Unit: (t)				
Boom length (m)		49												Boom length (m)				
Jib length (m)	Radius (m)	88	83	78	73	68	63	58	53	48	43	38	33	28	23	18	13	8
Boom angle (°)	Radius (m)	88	83	78	73	68	63	58	53	48	43	38	33	28	23	18	13	8
9.8	9.8																	
10	10																	
12	12																	
14	14																	
16	16																	
18	18	24.9																
20	20	23.0	21.5															
22	22	21.3	19.8	18.4														
24	24	19.9	18.1	17.1	18.1													
26	26	18.7	19.4	16.0	16.8	14.4	15.4											
28	28	17.5	18.2	15.0	15.8	13.4	14.3	11.6										
30	30	16.5	17.2	14.1	14.9	13.4	13.4	10.8	11.6									
32	32	15.6	16.2	13.3	14.0	12.4	12.4	9.5	10.1	10.8								
34	34	14.8	15.3	12.6	13.2	11.7	11.7	8.8	9.5	10.1	10.1							
36	36	13.7	14.6	11.7	12.5	11.0	11.0	8.2	8.8	9.5	10.1	10.1						
38	38	12.7	13.8	11.0	11.8	10.4	10.4	7.6	8.2	8.8	9.5	10.1	10.1					
40	40	11.8	12.9	10.3	11.1	9.8	9.8	7.1	7.6	8.2	8.8	9.5	10.1	10.1				
42	42	10.8	12.0	9.6	10.4	9.2	9.2	6.6	7.1	7.6	8.2	8.8	9.5	10.1	10.1			
44	44	9.6	11.2	8.7	9.8	8.8	8.8	6.2	6.7	7.1	7.6	8.2	8.8	9.5	10.1	10.1		
46	46	10.1	11.0	9.0	9.7	8.8	8.8	5.6	6.2	6.7	7.1	7.6	8.2	8.8	9.5	10.1	10.1	
48	48		10.3	9.1	9.8	9.0	9.0	5.4	5.8	6.2	6.7	7.1	7.6	8.2	8.8	9.5	10.1	10.1
50	50		9.5	8.5	9.2	8.5	8.5	5.0	5.4	5.8	6.2	6.7	7.1	7.6	8.2	8.8	9.5	10.1
52	52		9.4	8.5	9.3	8.5	8.5	5.0	5.4	5.8	6.2	6.7	7.1	7.6	8.2	8.8	9.5	10.1
54	54		9.4	8.4	9.0	8.4	8.4	5.0	5.4	5.8	6.2	6.7	7.1	7.6	8.2	8.8	9.5	10.1
56	56			9.2		8.3		5.0	5.4	5.8	6.2	6.7	7.1	7.6	8.2	8.8	9.5	10.1
58	58							6.6	6.9	7.2	7.5	7.6	8.2	8.8	9.5	10.1	10.1	10.1
60	60							6.6	6.9	7.2	7.5	7.6	8.2	8.8	9.5	10.1	10.1	10.1
62	62							6.6	6.9	7.2	7.5	7.6	8.2	8.8	9.5	10.1	10.1	10.1
64	64							6.6	6.9	7.2	7.5	7.6	8.2	8.8	9.5	10.1	10.1	10.1
66	66							6.6	6.9	7.2	7.5	7.6	8.2	8.8	9.5	10.1	10.1	10.1
68	68							6.6	6.9	7.2	7.5	7.6	8.2	8.8	9.5	10.1	10.1	10.1

Notes: The load values of 25% orange parts in the thick frames depend on the boom strength.

Description: 1. The actual lifting capacity is the rated lifting capacity minus the weight of lifting hook, wire rope and all lifting appliances.

2. The rated lifting capacity shown in the table is the value when the weight is hoisted slowly and stably on a level and hard ground without travelling.

3. The rated load is within 75% of the tipover load.

LUFFING JIB LOAD CHARTS

Rated Load Chart of SCC2500C Luffing Jib (without main hook, counterweight 85.2+5.8t)

Boom length (m)		22.5												Unit: (t)			
Jib length (m)	Radius (m)	88	83	78	73	68	63	58	61	63	68	73	78	83	88	9.8	10
Jib length (m)	Radius (m)	88	83	78	73	68	63	58	61	63	68	73	78	83	88	9.8	10
20	10.0	12.2															
22	9.3	11.3															
24	10.5																
26	8.0	9.8															
28	9.1	9.8															
30	8.5	9.1															
32	7.9	8.5															
34	7.2	7.9	8.5														
36	6.5	7.2	7.9	8.5													
38	6.0	6.5	7.2	7.9	8.5												
40	5.4	6.0	6.5	7.2	7.9	8.5											
42	4.9	5.4	6.0	6.5	7.2	7.9	8.5										
44	4.5	5.0	5.4	6.0	6.5	7.2	7.9	8.5									
46	4.0	4.5	5.0	5.4	6.0	6.5	7.2	7.9	8.5								
48	3.6	4.1	4.5	4.9	5.4	6.0	6.5	7.2	7.9	8.5							
50	3.1	3.6	4.1	4.5	4.9	5.4	6.0	6.5	7.2	7.9	8.5						
52		3.1	3.6	4.0	4.5	4.9	5.4	6.0	6.5	7.2	7.9	8.5					
54			3.2	3.6	4.0	4.5	4.9	5.4	6.0	6.5	7.2	7.9	8.5				
56				3.2	3.6	4.0	4.5	4.9	5.4	6.0	6.5	7.2	7.9	8.5			
58					2.9	3.2	3.6	4.0	4.5	4.9	5.4	6.0	6.5	7.2	7.9	8.5	
60																	
62																	
64																	
66																	
68																	

Notes: The load values of 25% orange parts in the thick frames depend on the boom strength.

- Description:
- The actual lifting capacity is the rated lifting capacity minus the weight of lifting hook, wire rope and all lifting appliances.
 - The rated lifting capacity shown in the table is the value when the weight is hoisted slowly and stably on a level and hard ground without travelling.
 - The rated load is within 75% of the tipover load.

LUFFING JIB LOAD CHARTS

Rated Load Chart of SCC2500C Luffing Jib (without main hook, counterweight 85.2+5.8t)

Unit: (t)

		25.5										28													
Boom length (m)		22					25					28					31								
Jib length (m)	Boom angle (°)	88	83	78	73	68	63	88	83	78	73	68	63	88	83	78	73	68	63	88	83	78	73	68	63
Radius(m)	Radius(m)	88	83	78	73	68	63	88	83	78	73	68	63	88	83	78	73	68	63	88	83	78	73	68	63
10	9.8	68.9																							
12	10	63.2						62.6												62.6					
14	12	56.1	60.1					56.5												56.5					
16	14	48.0	54.3					48.9	54.3											49.0					
18	16	40.4	47.7	47.7				41.1	47.7											41.3	47.5				
20	18	34.7	41.2	42.0				35.3	41.5	41.9										35.4	41.8				
22	20	30.1	35.3	37.2	36.2			30.8	36.0	37.2										31.0	36.3	37.1			
24	22		30.7	33.4	32.4			27.1	31.3	33.4	32.3									27.3	31.6	33.2			
26	24		25.4	30.2	29.3	28.5			27.6	30.2	29.3									24.2	27.9	30.0	29.2		
28	26			27.2	26.7	25.9	25.2		24.5	27.5	26.6	25.8								24.8	27.4	26.5			
30	28				24.5	23.8	23.1			24.9	24.5	23.7	23.0							22.1	24.9	24.4			
32	30				21.9	21.3				22.5	21.8	21.2								19.9	22.3	22.5	21.7		
34	32					19.8					20.3	19.7								20.1	20.5	20.1	19.5		
36	34											18.3								19.3	18.7	18.2	17.0		
38	36																					17.0	16.9	15.9	
40	38																								
42	40																								
44	42																								
46	44																								
48	46																								
50	48																								
52	50																								
54	52																								
56	54																								
58	56																								
60	58																								
62	60																								
64	62																								
66	64																								
68	66																								
70	70																								

Notes: The load values of 25% orange parts in the thick frames depend on the boom strength.

Description: 1. The actual lifting capacity is the rated lifting capacity minus the weight of lifting hook, wire rope and all lifting appliances.

2. The rated lifting capacity shown in the table is the value when the weight is hoisted slowly and stably on a level and hard ground without traveling.

3. The rated load is within 75% of the tipover load.

LUFFING JIB LOAD CHARTS

Rated Load Chart of SCC2500C Luffing Jib (without main hook, counterweight 85.2+5.8t)

Boom length (m) Jib length (m) Boom angle (°) Radius (m)	25.5										Unit: (t)
	31	34	37	40	43	46	49	52	55	58	
10											10
12	62.6										12
14	56.5	48.9									14
16	49.2	45.2	41.3								16
18	41.4	39.7	38.0								18
20	35.6	35.5	35.4	38.4							20
22	31.1	31.6	32.0	35.7							22
24	27.4	27.8	28.3	32.5	33.0						24
26	24.5	24.8	25.2	28.7	29.9						26
28	22.0	22.4	22.8	25.6	27.2						28
30	19.9	20.2	20.6	23.1	25.0	24.2					30
32	17.1	17.9	18.7	20.8	22.8	23.1	22.3				32
34		15.9	17.1	19.0	20.7	21.1	20.6	20.0			34
36	18.5	18.6	18.7	17.3	18.6	19.2	19.2	18.6			36
38		17.0	17.0	15.9	17.3	17.5	18.0	17.3	16.7		38
40		16.3	16.3	14.6	15.8	16.2	16.8	16.2	15.7		40
42		14.9	15.3	14.8	14.8	14.9	15.8	15.3	14.7		42
44			13.9			14.9	14.4	13.9			44
46							13.6	13.1			46
48								12.4			48
50											50
52											52
54											54
56											56
58											58
60											60
62											62
64											64
66											66
68											68
70											70

Notes: The load values of 25% orange parts in the thick frames depend on the boom strength.

Description: 1. The actual lifting capacity is the rated lifting capacity minus the weight of lifting hook, wire rope and all lifting appliances.

2. The rated lifting capacity shown in the table is the value when the weight is hoisted slowly and stably on a level and hard ground without traveling.

3. The rated load is within 75% of the tipover load.

LUFFING JIB LOAD CHARTS

Rated Load Chart of SCC2500C Luffing Jib (without main hook, counterweight 85.2+5.8t)

Boom length (m)		25.5																
Jib length (m)	40	43	46	49	52	55	58	61	64	67	70							
Boom angle (°) Radius(m)	88	83	78	73	68	63	58	53	48	43	38	33	28	24	20	16	12	10
10																		
12																		
14																		
16																		
18	35.7																	
20	33.2	30.2				24.9												
22	30.8	28.3	26.2			23.1												
24	28.2	25.4	23.7	21.4		20.0												
26	25.5	23.3	21.3	19.7	18.7	17.2												
28	23.3	21.5	19.7	18.4	16.6	15.1	14.1											
30	21.5	19.8	18.3	17.3	15.6	14.1	13.3											
32	19.8	18.3	17.3	16.3	14.8	13.3	12.6											
34	18.3	17.1	16.3	15.9	14.8	13.7	13.3											
36	17.1	15.7	15.9	15.9	14.8	13.7	13.3											
38	15.7	14.0	14.4	14.0	13.7	12.7	12.6											
40	14.0	13.5	13.3	13.0	12.6	11.8	11.6											
42	13.5	13.3	13.0	12.6	12.2	11.3	11.1											
44	13.5	13.3	12.8	12.6	12.2	11.3	11.1											
46	13.6	13.4	13.0	12.6	12.2	11.3	11.1											
48	12.6	12.3	11.7	11.6	11.4	10.5	10.3											
50			12.1	11.9	11.5	10.8	10.6											
52			11.3	10.9	10.4	9.9	9.7											
54			10.4	10.0	9.5	9.2	9.0											
56			9.2	8.8	8.4	8.1	7.9											
58			8.4	8.0	7.6	7.3	7.1											
60			7.6	7.2	6.8	6.5	6.3											
62			6.8	6.4	6.0	5.7	5.5											
64			6.0	5.6	5.2	4.9	4.7											
66			5.2	4.8	4.4	4.1	3.9											
68			4.4	4.0	3.6	3.3	3.1											
70			3.6	3.2	2.8	2.5	2.3											

- Notes: The load values of 25% orange parts in the thick frames depend on the boom strength.
Description: 1. The actual lifting capacity is the rated lifting capacity minus the weight of lifting hook, wire rope and all lifting appliances.
2. The rated lifting capacity shown in the table is the value when the weight is hoisted slowly and stably on a level and hard ground without traveling.
3. The rated load is within 75% of the tipover load.

LUFFING JIB LOAD CHARTS

Rated Load Chart of SCC2500C Luffing Jib (without main hook, counterweight 85.2+5.8t)

28.5

Unit: (t)	28.5																			
	22					25														
Boom length (m)	88	83	78	73	68	88	83	78	73	68	88	83	78	73	68	88	83	78	73	68
Jib length (m)	68.9	63.3	56.4	48.5	40.7	62.6	56.9	49.3	41.4	35.5	62.6	56.9	49.3	41.4	35.5	62.6	56.9	49.3	41.4	35.5
Boom angle (°)	68.9	63.3	56.4	48.5	40.7	62.6	56.9	49.3	41.4	35.5	62.6	56.9	49.3	41.4	35.5	62.6	56.9	49.3	41.4	35.5
Radius (m)	10	12	14	16	18	10	12	14	16	18	10	12	14	16	18	10	12	14	16	18
Boom length (m)	22	24	26	28	30	22	24	26	28	30	22	24	26	28	30	22	24	26	28	30
Jib length (m)	30.3	31.6	32.0	32.9	31.8	27.2	30.9	36.3	42.0	47.1	27.2	30.9	36.3	42.0	47.1	27.2	30.9	36.3	42.0	47.1
Boom angle (°)	30.3	31.6	32.0	32.9	31.8	27.2	30.9	36.3	42.0	47.1	27.2	30.9	36.3	42.0	47.1	27.2	30.9	36.3	42.0	47.1
Radius (m)	22	24	26	28	30	22	24	26	28	30	22	24	26	28	30	22	24	26	28	30
Boom length (m)	32	34	36	38	40	32	34	36	38	40	32	34	36	38	40	32	34	36	38	40
Jib length (m)	22.4	22.2	21.4	20.6	19.2	22.4	22.2	21.4	20.6	19.2	22.4	22.2	21.4	20.6	19.2	22.4	22.2	21.4	20.6	19.2
Boom angle (°)	22.4	22.2	21.4	20.6	19.2	22.4	22.2	21.4	20.6	19.2	22.4	22.2	21.4	20.6	19.2	22.4	22.2	21.4	20.6	19.2
Radius (m)	32	34	36	38	40	32	34	36	38	40	32	34	36	38	40	32	34	36	38	40
Boom length (m)	42	44	46	48	50	42	44	46	48	50	42	44	46	48	50	42	44	46	48	50
Jib length (m)	22.6	24.8	22.6	22.1	21.3	22.6	24.8	22.6	22.1	21.3	22.6	24.8	22.6	22.1	21.3	22.6	24.8	22.6	22.1	21.3
Boom angle (°)	22.6	24.8	22.6	22.1	21.3	22.6	24.8	22.6	22.1	21.3	22.6	24.8	22.6	22.1	21.3	22.6	24.8	22.6	22.1	21.3
Radius (m)	32	34	36	38	40	32	34	36	38	40	32	34	36	38	40	32	34	36	38	40
Boom length (m)	42	44	46	48	50	42	44	46	48	50	42	44	46	48	50	42	44	46	48	50
Jib length (m)	18.5	17.9	16.6	15.4	15.4	18.5	17.9	16.6	15.4	15.4	18.5	17.9	16.6	15.4	15.4	18.5	17.9	16.6	15.4	15.4
Boom angle (°)	18.5	17.9	16.6	15.4	15.4	18.5	17.9	16.6	15.4	15.4	18.5	17.9	16.6	15.4	15.4	18.5	17.9	16.6	15.4	15.4
Radius (m)	32	34	36	38	40	32	34	36	38	40	32	34	36	38	40	32	34	36	38	40
Boom length (m)	42	44	46	48	50	42	44	46	48	50	42	44	46	48	50	42	44	46	48	50
Jib length (m)	19.0	18.3	17.0	15.4	15.4	19.0	18.3	17.0	15.4	15.4	19.0	18.3	17.0	15.4	15.4	19.0	18.3	17.0	15.4	15.4
Boom angle (°)	19.0	18.3	17.0	15.4	15.4	19.0	18.3	17.0	15.4	15.4	19.0	18.3	17.0	15.4	15.4	19.0	18.3	17.0	15.4	15.4
Radius (m)	32	34	36	38	40	32	34	36	38	40	32	34	36	38	40	32	34	36	38	40
Boom length (m)	42	44	46	48	50	42	44	46	48	50	42	44	46	48	50	42	44	46	48	50
Jib length (m)	19.0	18.3	17.0	15.4	15.4	19.0	18.3	17.0	15.4	15.4	19.0	18.3	17.0	15.4	15.4	19.0	18.3	17.0	15.4	15.4
Boom angle (°)	19.0	18.3	17.0	15.4	15.4	19.0	18.3	17.0	15.4	15.4	19.0	18.3	17.0	15.4	15.4	19.0	18.3	17.0	15.4	15.4
Radius (m)	32	34	36	38	40	32	34	36	38	40	32	34	36	38	40	32	34	36	38	40

Notes: The load values of 25% orange parts in the thick frames depend on the boom strength.

Description: 1. The actual lifting capacity is the rated lifting capacity minus the weight of lifting hook, wire rope and all lifting appliances.

2. The rated lifting capacity shown in the table is the value when the weight is hoisted slowly and stably on a level and hard ground without traveling.

3. The rated load is within 75% of the tipover load.

LUFFING JIB LOAD CHARTS

Rated Load Chart of SCC2500C Luffing Jib (without main hook, counterweight 85.2+5.8t)

Boom length (m)	28.5								34								37								Jib length (m)	Boom angle (°)	Radius (m)	Unit: (t)	
	31	31	31	31	31	31	31	31	34	34	34	34	34	34	34	34	37	37	37	37	37	37	37	37					
10																									10				
12																										12			
14																										14			
16																										16			
18																										18			
20																										20			
22																										22			
24																										24			
26																										26			
28																										28			
30																										30			
32																										32			
34																										34			
36																										36			
38																										38			
40																										40			
42																										42			
44																										44			
46																										46			
48																										48			
50																										50			
52																										52			
54																										54			
56																										56			
58																										58			
60																										60			
62																										62			
64																										64			
66																										66			
68																										68			
70																										70			

Notes: The load values of 25% orange parts in the thick frames depend on the boom strength.

Description: 1. The actual lifting capacity is the rated lifting capacity minus the weight of lifting hook, wire rope and all lifting appliances.

2. The rated lifting capacity shown in the table is the value when the weight is hoisted slowly and stably on a level and hard ground without traveling.

3. The rated load is within 75% of the tipover load.

Rated Load Chart of SCC2500C Luffing Jib (without main hook, counterweight 85.2+5.8t)

Unit: (t)		28.5											
		43											
		46											
		49											
		63											
		68											
		73											
		78											
		83											
		88											
		93											
		10.0											
		10.5											
		11.0											
		11.5											
		12.0											
		12.5											
		13.0											
		13.5											
		14.0											
		14.5											
		15.0											
		15.5											
		16.0											
		16.5											
		17.0											
		17.5											
		18.0											
		18.5											
		19.0											
		19.5											
		20.0											
		20.5											
		21.0											
		21.5											
		22.0											
		22.5											
		23.0											
		23.5											
		24.0											
		24.5											
		25.0											
		25.5											
		26.0											
		26.5											
		27.0											
		27.5											
		28.0											
		28.5											
		29.0											
		29.5											
		30.0											
		30.5											
		31.0											
		31.5											
		32.0											
		32.5											
		33.0											
		33.5											
		34.0											
		34.5											
		35.0											
		35.5											
		36.0											
		36.5											
		37.0											
		37.5											
		38.0											
		38.5											
		39.0											
		39.5											
		40.0											
		40.5											
		41.0											
		41.5											
		42.0											
		42.5											
		43.0											
		43.5											
		44.0											
		44.5											
		45.0											
		45.5											
		46.0											
		46.5											
		47.0											
		47.5											
		48.0											
		48.5											
		49.0											
		49.5											
		50.0											
		50.5											
		51.0											
		51.5											
		52.0											
		52.5											
		53.0											
		53.5											
		54.0											
		54.5											
		55.0											
		55.5											
		56.0											
		56.5											
		57.0											
		57.5											
		58.0											
		58.5											
		59.0											
		59.5											
		60.0											
		60.5											
		61.0											
		61.5											
		62.0											
		62.5											
		63.0											
		63.5											
		64.0											
		64.5											
		65.0											
		65.5											
		66.0											
		66.5											
		67.0											
		67.5											
		68.0											
		68.5											
		69.0											
		69.5											
		70.0											

Notes: The load values of 25% orange parts in the thick frames depend on the boom strength.
 Description: 1. The actual lifting capacity is the rated lifting capacity minus the weight of lifting hook, wire rope and all lifting appliances.
 2. The rated lifting capacity shown in the table is the value when the weight is hoisted slowly and stably on a level and hard ground without traveling.
 3. The rated load is within 75% of the tipover load.

LUFFING JIB LOAD CHARTS

Rated Load Chart of SCC2500C Luffing Jib (without main hook, counterweight 85.2+5.8t)

		28.5										55										58										61										Unit: (t)	
		52										55										58										61										Boom length (m)	Jib length (m)
Boom length (m)	Jib length (m)	88	83	78	73	68	63	58	53	48	43	88	83	78	73	68	63	58	53	48	43	88	83	78	73	68	63	58	53	48	43	88	83	78	73	68	63	58	53	48	43	60	62
Radius(m)	Boom angle(°)																					60	62																				
10	10																																										
12	12																																										
14	14																																										
16	16																																										
18	18	18.2																																									
20	20	16.7																																									
22	22	15.5																				11.4	9.3																				
24	24	14.4																				10.5	8.6																				
26	26	13.5	14.7																			9.8	8.0	8.1																			
28	28	12.5	13.7																			9.1	9.9	7.4	8.1																		
30	30	11.7	12.8																			10.8	11.8	6.9	7.5																		
32	32	11.0	11.9	13.0																		10.1	11.0	6.4	7.0																		
34	34	10.4	11.2	12.1																		9.5	10.3	6.4	7.0																		
36	36	9.8	10.6	11.4																		8.8	9.7	5.6	6.5																		
38	38	9.3	10.0	10.7	11.5																	8.2	9.0	9.8	6.6	7.4	8.2																
40	40	8.8	9.4	10.1	10.9																	7.7	8.4	9.1	6.0	6.7	7.6																
42	42	8.4	8.9	9.6	10.3																	7.1	7.8	8.5	5.4	6.1	6.9																
44	44	7.9	8.5	9.1	9.7	10.4																6.7	7.2	8.0	8.7	5.0	5.6	6.3	7.0														
46	46	7.5	8.1	8.6	9.2	9.8																6.2	6.8	7.4	8.1	4.5	5.1	5.7	6.4														
48	48	7.1	7.7	8.2	8.7	9.3																5.8	6.3	6.9	7.5	6.5	4.1	4.6	5.2	5.8													
50	50	6.8	7.2	7.8	8.3	8.8	9.4															5.4	5.9	6.5	7.0	6.2	3.7	4.2	4.8	5.3													
52	52	6.5	6.9	7.4	7.9	8.4	8.9															5.1	5.5	6.0	6.6	5.8	3.3	3.8	4.3	4.9													
54	54			6.6	7.1	7.5	8.0	8.5															5.2	5.7	6.1	6.6	5.6	3.4	3.9	4.4													
56	56			6.4	6.7	7.1	7.7	8.1															4.9	5.4	5.1	5.6	4.0	3.4	4.0														
58	58			6.5	6.8	7.2	7.7	8.1															5.0	5.4	5.1	5.6	3.6	3.6	4.0														
60	60			6.6	6.9	7.3	7.7	8.1															5.0	4.8	4.6	4.6	3.2	3.2	3.2														
62	62			6.6	6.9	7.3	7.7	8.1															4.6	4.6	4.6	4.6	3.2	3.2	3.2														
64	64			6.6	6.9	7.3	7.7	8.1															6.7	6.7	6.7	6.7	3.2	3.2	3.2														
66	66			6.6	6.9	7.3	7.7	8.1															6.7	6.7	6.7	6.7	3.2	3.2	3.2														
68	68			6.6	6.9	7.3	7.7	8.1															6.7	6.7	6.7	6.7	3.2	3.2	3.2														
70	70			6.6	6.9	7.3	7.7	8.1															6.7	6.7	6.7	6.7	3.2	3.2	3.2														

Notes: The load values of 25% orange parts in the thick frames depend on the boom strength.

Description: 1. The actual lifting capacity is the rated lifting capacity minus the weight of lifting hook, wire rope and all lifting appliances.

2. The rated lifting capacity shown in the table is the value when the weight is hoisted slowly and stably on a level and hard ground without traveling.

3. The rated load is within 75% of the tipover load.

LUFFING JIB LOAD CHARTS

Rated Load Chart of SCC2500C Luffing Jib (without main hook, counterweight 85.2+5.8t)

		31.5										Unit: (t)				
		22					25					28		Boom length (m)		
Boom length (m)	Jib length (m)	88	83	78	73	68	63	88	83	78	73	68	63	Jib length (m)	Boom angle (°)	Radius (m)
10	68.9													10		
12	63.2													12		
14	56.7							62.6						14		
16	48.9							57.2					55.9	16		
18	41.0							49.8					49.9	18		
20	35.1							41.7					41.9	20		
22	30.5							35.8					46.2	22		
24	24.5							37.4					37.3	24		
26								32.6					33.2	26		
28								27.4					32.5	28		
30								23.8					29.1	30		
32								25.5					26.8	32		
34								23.2					24.5	34		
36								24.7					23.6	36		
38								22.7					21.7	38		
40								22.7					20.6	40		
42								20.2					20.1	42		
44								18.1					19.2	44		
46								19.5					18.8	46		
48								17.4					17.9	48		
50													16.2	50		
52													15.1	52		
54													14.0	54		
56														56		
58														58		
60														60		
62														62		
64														64		
66														66		
68														68		
70														70		

Notes: The load values of 25% orange parts in the thick frames depend on the boom strength.

Description: 1. The actual lifting capacity is the rated lifting capacity minus the weight of lifting hook, wire rope and all lifting appliances.

2. The rated lifting capacity shown in the table is the value when the weight is hoisted slowly and stably on a level and hard ground without traveling.

3. The rated load is within 75% of the tipover load.

LUFFING JIB LOAD CHARTS

Rated Load Chart of SCC2500C Luffing Jib (without main hook, counterweight 85.2+5.8t)

Boom length (m)		31.5										Unit: (t)					
Jib length (m)	Radius(m)	88	83	78	73	68	63	58	53	48	43	37	32	26	20	14	10
10	12																
14	16	54.6															
18	20	42.0	45.2														
22	24	31.4	37.1														
26	28	24.7	29.4	29.2													
30	32	20.0	23.5	24.4	23.5												
34	36	17.6	21.1	22.4	21.6	21.6											
38	40	19.1	20.8	20.0	19.0	19.0	19.9										
42	44	17.9	19.4	18.7	17.6	17.6	17.3	17.3	19.4	18.6	17.6	16.5	15.5				
46	48	17.4	17.4	16.5	15.9	15.9	15.5	14.9	14.5	14.0	13.2	12.4	11.6	11.6			
50	52	16.3	16.3	15.5	14.9	14.9	14.5	14.0	13.7	13.1	12.3	11.6	11.0	10.4			
54	56																
58	60																
62	64																
66	68																
70																	

Notes: The load values of 25% orange parts in the thick frames depend on the boom strength.

Description: 1. The actual lifting capacity is the rated lifting capacity minus the weight of lifting hook, wire rope and all lifting appliances.

2. The rated lifting capacity shown in the table is the value when the weight is hoisted slowly and stably on a level and hard ground without traveling.

3. The rated load is within 75% of the tipover load.

LUFFING JIB LOAD CHARTS

Rated Load Chart of SCC2500C Luffing Jib (without main hook, counterweight 85.2+5.8t)

Boom length (m)		31.5										Unit: (t)			
Jib length (m)	Radius (m)	40	43	46	49	52	55	58	61	64	67	70	Boom length (m)	Jib length (m)	
Boom angle (°)	Radius (m)													Boom angle (°)	Radius (m)
10	10													10	
12	12													12	
14	14													14	
16	16	35.8												16	
18	18	33.4	30.2											18	
20	20	31.0	28.5	25.1										20	
22	22	28.5	26.3	23.2	21.7									22	
24	24	25.7	24.5	21.5	20.0									24	
26	26	23.5	22.8	20.1	18.6									26	
28	28	21.5	21.4	18.8	17.5									28	
30	30	19.8	20.1	17.6	16.4									30	
32	32	18.4	20.1	16.6	15.3									32	
34	34	17.1	19.0	15.6	14.4									34	
36	36	15.8	18.0	14.8	13.5									36	
38	38	14.2	17.0	13.7	12.8									38	
40	40	13.1	16.3	12.8	12.1									40	
42	42	14.1	15.2	11.8	11.4									42	
44	44	14.3	14.2	11.0	10.9									44	
46	46	13.2	13.4	10.8	10.7									46	
48	48	12.6	12.0	9.9	9.6									48	
50	50	11.3	10.8	10.2	10.0									50	
52	52	10.3	11.3	10.6	10.2									52	
54	54	9.8	10.1	9.6	9.3									54	
56	56		9.1	8.8	8.5									56	
58	58			8.5	8.1									58	
60	60													60	
62	62													62	
64	64													64	
66	66													66	
68	68													68	
70	70													70	

Notes: The load values of 25% orange parts in the thick frames depend on the boom strength.

Description: 1. The actual lifting capacity is the rated lifting capacity minus the weight of lifting hook, wire rope and all lifting appliances.

2. The rated lifting capacity shown in the table is the value when the weight is hoisted slowly and stably on a level and hard ground without traveling.

3. The rated load is within 75% of the tipover load.

LUFFING JIB LOAD CHARTS

Rated Load Chart of SCC2500C Luffing Jib (without main hook, counterweight 85.2+5.8t)

Boom length (m)		31.5										Unit: (t)													
Jib length (m)	Radius (m)	52	55	58	61	63	66	68	71	73	76	78	80	82	84	86	88	90	92	94	96	98	100		
Boom length (m)	Jib length (m)																								
Radius (m)	Boom angle (°)																								
10	10																								
12	12																								
14	14																								
16	16																								
18	18	18.3																							
20	20	16.8																							
22	22	15.6																							
24	24	14.5																							
26	26	13.5	14.9																						
28	28	12.5	13.9																						
30	30	11.7	13.0																						
32	32	11.0	12.1	13.3																					
34	34	10.4	11.3	12.3																					
36	36	9.8	10.7	11.6																					
38	38	9.3	10.1	10.9																					
40	40	8.8	9.5	10.3	11.1																				
42	42	8.4	9.0	9.7	10.5																				
44	44	7.9	8.6	9.2	9.9																				
46	46	7.5	8.1	8.7	9.4	10.1																			
48	48	7.1	7.7	8.3	8.9	9.6																			
50	50	6.8	7.3	7.9	8.4	9.1																			
52	52	6.5	6.9	7.4	8.1	8.6	9.2																		
54	54		6.6	7.1	7.7	8.2	8.8																		
56	56		6.4	6.8	7.3	7.8	8.3																		
58	58		6.5	6.9	7.4	8.0																			
60	60			6.7	7.2	7.5																			
62	62				6.8	7.2																			
64	64					6.5	6.9																		
66	66						6.6																		
68	68																								
70	70																								

Notes: The load values of 25% orange parts in the thick frames depend on the boom strength.
 Description: 1. The actual lifting capacity is the rated lifting capacity minus the weight of lifting hook, wire rope and all lifting appliances.
 2. The rated lifting capacity shown in the table is the value when the weight is hoisted slowly and stably on a level and hard ground without traveling.
 3. The rated load is within 75% of the tipover load.

LUFFING JIB LOAD CHARTS

Rated Load Chart of SCC2500C Luffing Jib (without main hook, counterweight 85.2+5.8t)

Boom length (m) Jib length (m) Radius (m)	34.5							34							37							Unit: (t)																				
	31	31	31	31	31	31	31	34	34	34	34	34	34	34	37	37	37	37	37	37	37		Boom length (m)	Jib length (m)	Boom angle (°)	Radius (m)																
10																						10	10		10																	
12																							12	12		12																
14	54.6																								14	14																
16	50.5	47.9																41.3								16	16															
18	42.3	44.2	40.4															38.5									18	18														
20	36.3	39.9	36.0	39.2														35.7	38.5									20	20													
22	31.6	36.3	32.1	35.6														32.6	35.0										22	22												
24	27.8	33.4	28.3	32.7														28.8	32.0											24	24											
26	24.8	30.1	25.2	29.8	28.5													25.6	29.6												26	26										
28	22.2	26.6	22.6	26.9	26.2													23.0	27.1													28	28									
30	20.1	23.9	20.5	24.1	24.1													20.8	24.3													30	30									
32	17.9	21.4	18.9	21.7	22.2	21.2												19.9	21.9														32	32								
34		19.4	17.1	20.6	19.7	18.6	17.2											17.2	19.9															34	34							
36		17.1	17.9	19.2	18.4	17.2												15.8	18.2																36	36						
38			17.9	17.1	16.1													14.2	16.6																	38	38					
40			16.0	15.1	14.4													15.3	16.8																		40	40				
42			15.1	14.2	13.6													13.7	15.8																			42	42			
44			13.4	12.8														13.4	14.7																			44	44			
46				12.0														11.9	13.3																				46	46		
48																		11.3	11.9																				48	48		
50																		11.3	11.3																				50	50		
52																																								52	52	
54																																									54	54
56																																									56	56
58																																									58	58
60																																									60	60
62																																									62	62
64																																									64	64
66																																									66	66
68																																									68	68
70																																									70	70
72																																									72	72

Notes: The load values of 25% orange parts in the thick frames depend on the boom strength.
 Description: 1. The actual lifting capacity is the rated lifting capacity minus the weight of lifting hook, wire rope and all lifting appliances.
 2. The rated lifting capacity shown in the table is the value when the weight is hoisted slowly and stably on a level and hard ground without traveling.
 3. The rated load is within 75% of the tipover load.

LUFFING JIB LOAD CHARTS

Rated Load Chart of SCC2500C Luffing Jib (without main hook, counterweight 85.2+5.8t)

Unit: (t)

		34.5																	
		55				58				61									
		88	83	78	73	68	63	58	53	48	43	38	33	28	23	18	13	Boom length (m)	
Boom length (m)	Jib length (m)																		
Boom angle(°)	Jib length (m)																		
Radius(m)	Radius (m)																		
12	12																		
14	14																		
16	16																		
18	18	18.4																	
20	20	16.8																	
22	22	15.6																	
24	24	14.5																	
26	26	13.5	15.0																
28	28	12.6	14.0																
30	30	11.8	13.1																
32	32	11.1	12.2																
34	34	10.4	11.4	12.6															
36	36	9.8	10.8	11.8															
38	38	9.3	10.2	11.1															
40	40	8.8	9.6	10.5	11.4														
42	42	8.4	9.1	9.9	10.8														
44	44	7.9	8.6	9.4	10.2														
46	46	7.5	8.2	8.9	9.6	10.4													
48	48	7.1	7.8	8.4	9.1	9.9													
50	50	6.8	7.3	8.0	8.7	9.3													
52	52	6.5	7.0	7.5	8.2	8.9	9.5												
54	54	6.7	7.2	7.8	8.4	9.0													
56	56	6.4	6.9	7.4	8.0	8.6													
58	58	6.6	7.1	7.7	8.1														
60	60	6.8	7.2	7.7															
62	62	6.5	6.9	7.3	4.6														
64	64	6.6	6.9	4.4															
66	66		6.6																
68	68			6.3															
70	70																		
72	72																		

Notes: The load values of 25% orange parts in the thick frames depend on the boom strength.
 Description: 1. The actual lifting capacity is the rated lifting capacity minus the weight of lifting hook, wire rope and all lifting appliances.
 2. The rated lifting capacity shown in the table is the value when the weight is hoisted slowly and stably on a level and hard ground without traveling.
 3. The rated load is within 75% of the tipover load.

LUFFING JIB LOAD CHARTS

Rated Load Chart of SCC2500C Luffing Jib (without main hook, counterweight 85.2+5.8t)

Boom length (m)		37.5										Unit: (t)							
Jib length (m)	Radius (m)	22	25	28															
Boom angle (°)	Radius (m)	88	83	78	73	68	63	63	68	73	78	83	88	88	83	78	73	68	63
10	10																		
12	12	63.4																	
14	14	57.4	54.6																
16	16	49.8	50.9	50.6	50.4								54.6						
18	18	41.6	45.4	42.3	45.0								42.5						
20	20	35.5	40.9	38.9	40.6								36.4	39.8					
22	22	30.8	37.3	35.4	37.0	35.2							31.6	36.3					
24	24	25.4	33.7	31.9	33.6	31.8							27.8	33.0	31.4				
26	26		29.7	28.9	27.5	28.8							24.2	30.1	28.6				
28	28			26.3	25.1	26.2	24.9						26.5	26.2	26.1				
30	30			24.1	23.1	21.7	22.8						23.6	24.1	23.9	22.7			
32	32			21.2	20.0	19.9	22.2	21.0	19.9					22.1	20.9				
34	34			20.2	18.5	17.6	19.5	18.4	18.4					19.4					
36	36			17.2	16.4	16.1	18.2	17.1	16.1					18.1	16.9				
38	38				15.3	15.1		16.0	15.1					15.8					
40	40				14.3	14.1		15.0	14.1					14.8	14.0				
42	42					13.3								13.1					
44	44													12.2					
46	46																		
48	48																		
50	50																		
52	52																		
54	54																		
56	56																		
58	58																		
60	60																		
62	62																		
64	64																		
66	66																		
68	68																		
70	70																		
72	72																		

Notes: The load values of 25% orange parts in the thick frames depend on the boom strength.
 Description: 1. The actual lifting capacity is the rated lifting capacity minus the weight of lifting hook, wire rope and all lifting appliances.
 2. The rated lifting capacity shown in the table is the value when the weight is hoisted slowly and stably on a level and hard ground without traveling.
 3. The rated load is within 75% of the tipover load.

LUFFING JIB LOAD CHARTS

Rated Load Chart of SCC2500C Luffing Jib (without main hook, counterweight 85.2+5.8t)

Boom length (m)		37.5										Unit: (t)				
Jib length (m)	Radius(m)	31	34	37	40	43	46	49	52	55	58	61	64	67	70	72
10	10															
12	12															
14	14	54.6														
16	16	50.2														
18	18	42.6														
20	20	36.5	39.0													
22	22	31.7	35.5	34.8												
24	24	27.9	32.5	31.9												
26	26	24.9	30.1	28.5												
28	28	22.3	27.2	25.9												
30	30	20.1	24.3	23.8	22.6											
32	32	18.1	21.8	21.9	20.8											
34	34	19.8	20.3	19.3	18.0	16.7										
36	36	17.9	18.9	18.0	17.6	16.7	15.6									
38	38															
40	40															
42	42															
44	44															
46	46															
48	48															
50	50															
52	52															
54	54															
56	56															
58	58															
60	60															
62	62															
64	64															
66	66															
68	68															
70	70															
72	72															

Notes: The load values of 25% orange parts in the thick frames depend on the boom strength.
 Description: 1. The actual lifting capacity is the rated lifting capacity minus the weight of lifting hook, wire rope and all lifting appliances.
 2. The rated lifting capacity shown in the table is the value when the weight is hoisted slowly and stably on a level and hard ground without traveling.
 3. The rated load is within 75% of the tipover load.

Rated Load Chart of SCC2500Cluffing Jib (without main hook, counterweight 85.2+5.8t)

Unit: (t)

Boom length (m)		37.5																																					
Jib length (m)	40	43							46							49																							
Boom angle (°)	88	83	83	78	73	68	63	63	68	73	78	83	88	83	78	73	68	63																					
Load radius (m)	12	14	16	18	20	22	24	26	28	30	32	34	36	38	40	42	44	46	48	50	52	54	56	58	60	62	64	66	68	70	72								
16	35.8		30.3																																				
18	33.6		28.7				25.2																																
20	31.2		26.5				23.3																																
22	28.7		24.6				21.6																																
24	25.9	28.1					20.1																																
26	23.6	26.1					18.9	20.6																															
28	21.6	24.3					17.7	19.2																															
30	19.9	22.6	23.1				16.7	18.1																															
32	18.5	20.8	21.5				15.7	17.0																															
34	17.2	19.2	20.0				14.8	16.0	17.4																														
36	15.9	17.9	18.7	17.6			13.8	15.2	16.3																														
38	14.4	16.7	17.5	16.5			12.8	14.4	15.3																														
40	13.3	15.6	16.4	15.4			11.8	13.7	14.3	14.0																													
42		14.3	15.4	14.5	13.6		11.0	12.7	13.5	13.2																													
44			14.5	14.5	13.6	12.8		11.2	13.4	13.4	12.5																												
46				12.8	11.9			12.4	13.5	12.5	11.7																												
48				12.1	11.3	10.6		11.4	12.8	11.8	11.0	10.3																											
50				10.7	9.9			10.2	11.3	11.0	10.7																												
52				10.2	9.4			10.6	11.2	10.4	9.7																												
54				8.9				10.1	10.1	9.4	8.7																												
56				8.5				9.0	8.3																														
58								7.9																															
60								7.5																															
62								7.0																															
64																																							
66																																							
68																																							
70																																							
72																																							

Notes: The load values of 25% orange parts in the thick frames depend on the boom strength.

Description: 1. The actual lifting capacity is the rated lifting capacity minus the weight of lifting hook, wire rope and all lifting appliances.

2. The rated lifting capacity shown in the table is the value when the weight is hoisted slowly and stably on a level and hard ground without travelling.

3. The rated load is within 75% of the tipover load.

LUFFING JIB LOAD CHARTS

Rated Load Chart of SCC2500C Luffing Jib (without main hook, counterweight 85.2+5.8t)

Unit: (t)	37.5																				Boom length (m) Jib length (m)																
	55					58					61					Radius (m)																					
Boom length (m) Jib length (m)	88	83	78	73	68	88	83	78	73	68	88	83	78	73	68		88	83	78	73	68	63	68														
Boom angle (°) Radius (m)	12	14	16	18	20	22	24	26	28	30	32	34	36	38	40	42	44	46	48	50	52	54	56	58	60	62	64	66	68	70	72						
12																																					
14																																					
16																																					
18	18.4																																				
20	16.9																																				
22	15.6										13.5																										
24	14.5										12.5																										
26	13.6	15.2									11.7																										
28	12.6	14.2									10.9																										
30	11.8	13.2									10.2	11.4																									
32	11.1	12.3									9.6	10.6																									
34	10.4	11.6	12.9								8.8	10.0																									
36	9.8	10.9	12.0								8.2	9.4																									
38	9.3	10.2	11.3								7.7	8.6	9.8																								
40	8.8	9.7	10.6	11.7							7.1	8.1	9.0																								
42	8.4	9.2	10.1	11.0							6.7	7.5	8.5																								
44	7.9	8.7	9.5	10.4							6.2	7.0	7.8																								
46	7.5	8.2	9.0	9.8							5.8	6.5	7.3	8.2																							
48	7.1	7.8	8.5	9.3	10.2						5.4	6.1	6.8	7.7																							
50	6.8	7.4	8.1	8.8	9.6						5.1	5.7	6.4	7.1	6.4																						
52	6.5	7.0	7.7	8.4	9.1							5.3	5.9	6.7	6.1	6.1																					
54		7.0	7.3	8.0	8.7	8.6						5.6	6.2	5.8																							
56		6.4	7.0	7.5	8.2	8.1						5.2	5.8	5.4																							
58			6.7	7.2	7.9	7.7						5.5	5.2																								
60			6.4	6.9	7.4	7.2						5.1	5.0																								
62			6.6	7.1	6.8							4.8																									
64			6.8	6.4								4.6																									
66			6.5	6.1																																	
68												5.8																									
70																																					
72																																					

Notes: The load values of 25% orange parts in the thick frames depend on the boom strength.
 Description: 1. The actual lifting capacity is the rated lifting capacity minus the weight of lifting hook, wire rope and all lifting appliances.
 2. The rated lifting capacity shown in the table is the value when the weight is hoisted slowly and stably on a level and hard ground without traveling.
 3. The rated load is within 75% of the tipover load.

LUFFING JIB LOAD CHARTS

Rated Load Chart of SCC2500C Luffing Jib (without main hook, counterweight 85.2+5.8t)

Boom length (m)		40.5										Unit: (t)							
Jib length (m)	Radius (m)	22	25	28	31	34	37	40	43	46	49	52	55	58	61	64	67	70	72
Boom angle (°)	Radius (m)	88	83	78	73	68	63	58	53	48	43	38	33	28	23	18	13	8	3
10	10																		
12	12	54.6																	
14	14	54.6	54.6																
16	16	50.2	49.6	51.1															
18	18	41.9	44.3	42.7	43.9														
20	20	35.7	40.0	36.4	39.7	36.2	38.9												
22	22	30.9	36.4	31.6	34.2	31.8	35.4	31.8	35.4										
24	24	25.8	33.5	27.7	31.3	27.9	32.5	24.8	29.8	24.8	29.8								
26	26		30.2	28.5	27.0	24.6	28.5	24.8	29.8	24.8	29.8	24.8	29.8						
28	28		25.5	25.9	24.6	27.4	25.9	24.5	27.4	24.5	27.4	24.5	27.4	24.5	27.4				
30	30			23.8	22.5	24.3	23.8	22.4	24.3	23.8	22.4	24.3	23.8	22.4	24.3	23.8	22.4	24.3	23.8
32	32			20.8	20.7	21.9	20.7	20.3	21.9	20.3	20.7	21.9	20.3	20.7	21.9	20.3	20.7	21.9	20.3
34	34			19.3	19.2	19.3	19.2	17.9	19.3	17.9	19.2	17.9	19.3	17.9	19.2	17.9	19.3	17.9	19.2
36	36			16.7	16.6	16.7	16.6	15.5	16.7	15.5	16.6	15.5	16.7	15.5	16.6	15.5	16.7	15.5	16.6
38	38			15.6	14.7	15.6	14.6	14.5	15.6	14.5	14.6	14.5	15.6	14.5	14.6	14.5	15.6	14.5	14.6
40	40				13.8														
42	42																		
44	44																		
46	46																		
48	48																		
50	50																		
52	52																		
54	54																		
56	56																		
58	58																		
60	60																		
62	62																		
64	64																		
66	66																		
68	68																		
70	70																		
72	72																		

Notes: The load values of 25% orange parts in the thick frames depend on the boom strength.

Description: 1. The actual lifting capacity is the rated lifting capacity minus the weight of lifting hook, wire rope and all lifting appliances.

2. The rated lifting capacity shown in the table is the value when the weight is hoisted slowly and stably on a level and hard ground without traveling.

3. The rated load is within 75% of the tipover load.

LUFFING JIB LOAD CHARTS

Rated Load Chart of SCC2500C Luffing Jib (without main hook, counterweight 85.2+5.8t)

Boom length (m)		40.5												Unit: (t)											
Jib length (m)	Radius (m)	31	34	37	40.5	44	48	52	56	60	64	68	72	76	80	84	88	92	96	100	104	108	112	116	120
Boom length (m)	Jib length (m)																								
Radius (m)	Boom angle (°)																								
10	10																								
12	12																								
14	14																								
16	16																								
18	18																								
20	20																								
22	22																								
24	24																								
26	26																								
28	28																								
30	30																								
32	32																								
34	34																								
36	36																								
38	38																								
40	40																								
42	42																								
44	44																								
46	46																								
48	48																								
50	50																								
52	52																								
54	54																								
56	56																								
58	58																								
60	60																								
62	62																								
64	64																								
66	66																								
68	68																								
70	70																								
72	72																								

Notes: The load values of 25% orange parts in the thick frames depend on the boom strength.

- Description:
1. The actual lifting capacity is the rated lifting capacity minus the weight of lifting hook, wire rope and all lifting appliances.
 2. The rated lifting capacity shown in the table is the value when the weight is hoisted slowly and stably on a level and hard ground without travelling.
 3. The rated load is within 75% of the tipover load.

LUFFING JIB LOAD CHARTS

Rated Load Chart of SCC2500C Luffing Jib (without main hook, counterweight 85.2+5.8t)

Unit: (t)		40.5																	
		43						46						49					
Boom length (m)	Jib length (m)	88	83	78	73	68	63	58	53	48	43	38	33	28	23	18	13	8	3
Boom length (m)	Jib length (m)																		
Radius(m)	Boom angle (°)																		
12	12																		
14	14																		
16	16	35.8																	
18	18	33.7	30.3																
20	20	31.3	28.8	26.7															
22	22	28.8	24.7	23.4	21.7														
24	24	26.1	23.1	20.2	18.9	17.4													
26	26	23.7	21.5	18.9	17.7	16.2	15.2												
28	28	21.7	20.2	17.7	16.7	15.2	14.2	13.4											
30	30	20.0	19.1	16.7	15.7	14.2	13.4	12.7	11.9										
32	32	18.5	18.1	15.8	14.9	13.8	12.7	11.8	11.1	10.3									
34	34	17.2	17.1	15.8	14.9	13.8	12.7	11.8	11.1	10.3	9.7								
36	36	15.9	15.8	14.6	13.8	12.8	11.8	11.1	10.3	9.7	9.1	8.3							
38	38	14.5	14.5	13.4	12.8	11.8	11.1	10.3	9.7	9.1	8.3	7.7	7.0						
40	40	13.4	13.4	12.4	11.6	10.6	10.0	9.2	8.5	7.7	7.0	6.6	6.2	5.8					
42	42	14.5	14.1	12.4	11.5	10.6	10.0	9.2	8.5	7.7	7.0	6.6	6.2	5.8	5.4				
44	44		14.2	13.2	12.3	11.5	10.6	9.8	9.0	8.2	7.5	7.0	6.5	6.2	5.8	5.4			
46	46		13.4	12.4	11.6	10.6	10.0	9.2	8.5	7.7	7.0	6.6	6.2	5.8	5.4	5.0			
48	48			11.8	10.9	10.0	9.2	8.5	7.7	7.0	6.6	6.2	5.8	5.4	5.0	4.6			
50	50			10.3	9.5	8.7	8.0	7.3	6.6	6.2	5.8	5.4	5.0	4.6	4.2	3.8			
52	52			9.7	9.0	8.2	7.5	6.8	6.2	5.8	5.4	5.0	4.6	4.2	3.8	3.4			
54	54			8.5	7.8	7.1	6.4	5.8	5.4	5.0	4.6	4.2	3.8	3.4	3.0	2.6			
56	56			8.1	7.4	6.7	6.0	5.4	5.0	4.6	4.2	3.8	3.4	3.0	2.6	2.2			
58	58			8.0	7.3	6.6	6.0	5.4	5.0	4.6	4.2	3.8	3.4	3.0	2.6	2.2	1.8		
60	60					7.0	6.4	5.8	5.4	5.0	4.6	4.2	3.8	3.4	3.0	2.6	2.2	1.8	
62	62					6.7	6.1	5.5	5.1	4.7	4.3	3.9	3.5	3.1	2.7	2.3	1.9	1.5	
64	64																		
66	66																		
68	68																		
70	70																		
72	72																		

Notes: The load values of 25% orange parts in the thick frames depend on the boom strength.

Description: 1. The actual lifting capacity is the rated lifting capacity minus the weight of lifting hook, wire rope and all lifting appliances.

2. The rated lifting capacity shown in the table is the value when the weight is hoisted slowly and stably on a level and hard ground without traveling.

3. The rated load is within 75% of the tipover load.

LUFFING JIB LOAD CHARTS

S Rated Load Chart of SCC2500C Luffing Jib (without main hook, counterweight 85.2+5.8t)

		40.5												Unit: (t)																						
		55						58						61		63	68	73	78	83	88	94														
Boom length (m)	Jib length (m)	88	83	78	73	68	63	58	53	48	43	38	33	28	23	18	13	8	3	0	0	0														
Boom angle (°)	Jib length (m)	12	14	16	18	20	22	24	26	28	30	32	34	36	38	40	42	44	46	48	50	52	54	56	58	60	62	64	66	68	70	72				
Load radius (m)	Radius (m)	12	14	16	18	20	22	24	26	28	30	32	34	36	38	40	42	44	46	48	50	52	54	56	58	60	62	64	66	68	70	72				
12	12																																			
14	14																																			
16	16																																			
18	18																																			
20	20	16.9																																		
22	22	15.7																																		
24	24	14.6																																		
26	26	13.6	15.4																																	
28	28	12.6	14.3																																	
30	30	11.8	13.4																																	
32	32	11.1	12.4																																	
34	34	10.5	11.7	13.2																																
36	36	9.9	11.0	12.3																																
38	38	9.3	10.3	11.5																																
40	40	8.8	9.8	10.8																																
42	42	8.4	9.2	10.2	11.3																															
44	44	8.0	8.8	9.7	10.7																															
46	46	7.5	8.3	9.1	10.1																															
48	48	7.1	7.9	8.7	9.5	10.5																														
50	50	6.8	7.4	8.2	9.0	9.9																														
52	52	6.5	7.1	7.8	8.6	9.4																														
54	54	6.2	6.8	7.4	8.2	8.9																														
56	56	6.5	7.0	7.8	8.5	7.5																														
58	58	6.7	7.3	8.1	7.1	7.1																														
60	60	6.5	7.0	7.7	6.7	6.7																														
62	62	6.7	7.2	6.3	4.8	4.8																														
64	64	6.4	6.8	6.0	4.6	4.6																														
66	66	6.5	5.7	4.4	4.4	4.4																														
68	68		5.4	5.4	5.4	5.4																														
70	70		5.1	5.1	5.1	5.1																														
72	72																																			

Notes: The load values of 25% orange parts in the thick frames depend on the boom strength.

Description: 1. The actual lifting capacity is the rated lifting capacity minus the weight of lifting hook, wire rope and all lifting appliances.

2. The rated lifting capacity shown in the table is the value when the weight is hoisted slowly and stably on a level and hard ground without traveling.

3. The rated load is within 75% of the tipover load.

LUFFING JIB LOAD CHARTS

Rated Load Chart of SCC2500C Luffing Jib (without main hook, counterweight 85.2+5.8t)

Boom length (m)		43.5										Unit: (t)														
Jib length (m)	Radius (m)	22	25	28	30	32	34	36	38	40	42	44	46	48	50	52	54	56	58	60	62	64	66	68	70	72
10																										
12		54.6																								
14		54.6	54.6																							
16		50.7	50.4	53.8																						
18		42.2	43.0	49.3	43.1																					
20		36.0	38.9	48.2	42.8	36.8	37.9																			
22		31.1	35.5	33.2	35.3	32.0	34.6																			
24		26.2	32.6	30.4	32.4	28.1	31.7	28.1																		
26			30.0	28.1	24.7	24.9	29.3	27.4	27.4																	
28		26.9	25.6	24.1	27.3	25.5	24.0	22.2	25.1																	
30			23.5	22.0	24.8	23.4	21.9	24.8	23.2	24.8																
32		21.6	20.3	18.8	21.5	20.3	20.3	21.4	20.1	21.4																
34			18.8	17.3	20.0	18.8	17.3	19.8	18.6	19.8																
36				16.1	17.4	16.0	16.0	17.3	17.3	17.3																
38			15.1	14.1	16.3	15.0	15.0	16.1	16.1	16.1																
40				13.2	14.0	13.1	13.1	14.0	13.8	13.8																
42				12.3	13.2	12.2	12.2	13.2	13.0	13.0																
44					11.5	11.5	11.5	11.4	11.4	11.4																
46																										
48																										
50																										
52																										
54																										
56																										
58																										
60																										
62																										
64																										
66																										
68																										
70																										
72																										

Notes: The load values of 25% orange parts in the thick frames depend on the boom strength.

Description: 1. The actual lifting capacity is the rated lifting capacity minus the weight of lifting hook, wire rope and all lifting appliances.

2. The rated lifting capacity shown in the table is the value when the weight is hoisted slowly and stably on a level and hard ground without traveling.

3. The rated load is within 75% of the tipover load.

LUFFING JIB LOAD CHARTS

S Rated Load Chart of SCC2500C Luffing Jib (without main hook, counterweight 85.2+5.8t)

Unit: (t)

Boom length (m)		43.5																
Jib length (m)		31					34					37						
Radius(m)	Boom angle (°)	88	83	78	73	68	63	58	53	48	43	38	33	28	23	18	13	10
		88	83	78	73	68	63	58	53	48	43	38	33	28	23	18	13	10
10																		
12																		
14		53.0																
16		48.2																
18		43.2													40.7			
20		36.9	37.1												36.0			
22		32.1	33.9												33.2	32.5		
24		28.3	31.0												29.2	29.9		
26		25.1	28.7	26.7											25.9	27.5		
28		22.4	26.6	24.8											23.3	25.6	23.8	
30		20.2	24.9	23.1											21.0	23.9	22.1	
32		18.3	22.6	21.2	19.9										19.1	22.3	20.7	
34		20.4	19.7	18.4											17.4	20.8	19.4	
36		18.5	18.3	17.1											15.9	19.0	18.3	
38			17.0	15.9	14.6										14.6	17.3	17.1	
40			16.0	14.9	13.7										15.9	16.0	14.8	
42				14.0	12.8										14.6	15.1	13.9	
44				13.2	12.0	11.2									14.2	13.1	12.0	
46				11.3	10.5										13.4	12.3	11.3	
48				10.7	9.9										11.6	10.7	9.8	
50					9.4										11.0	10.1	9.2	
52															9.6	8.7	8.2	
54																9.1	8.3	
56																7.9	7.9	
58																		
60																		
62																		
64																		
66																		
68																		
70																		
72																		

Notes: The load values of 25% orange parts in the thick frames depend on the boom strength.
 Description: 1. The actual lifting capacity is the rated lifting capacity minus the weight of lifting hook, wire rope and all lifting appliances.
 2. The rated lifting capacity shown in the table is the value when the weight is hoisted slowly and stably on a level and hard ground without traveling.
 3. The rated load is within 75% of the tipover load.

LUFFING JIB LOAD CHARTS

SRated Load Chart of SCC2500C Luffing Jib (without main hook, counterweight 85.2+5.8t)

Unit: (t)

Boom length (m)		43.5												Boom length (m)									
Jib length (m)	Radius(m)	40	43	46	49	52	55	58	61	64	67	70	73	76	79	82	85	88	91	94	97	100	
12																							
14																							
16																							
18																							
20																							
22																							
24																							
26																							
28																							
30																							
32																							
34																							
36																							
38																							
40																							
42																							
44																							
46																							
48																							
50																							
52																							
54																							
56																							
58																							
60																							
62																							
64																							
66																							
68																							
70																							
72																							

Notes: The load values of 25% orange parts in the thick frames depend on the boom strength.

Description: 1. The actual lifting capacity is the rated lifting capacity minus the weight of lifting hook, wire rope and all lifting appliances.

2. The rated lifting capacity shown in the table is the value when the weight is hoisted slowly and stably on a level and hard ground without traveling.

3. The rated load is within 75% of the tipover load.

LUFFING JIB LOAD CHARTS

S Rated Load Chart of SCC2500C Luffing Jib (without main hook, counterweight 85.2+5.8t)

Unit: (t)

Boom length (m) Jib length (m)	43.5										Boom length (m) Jib length (m)														
	52	55	58	61	63	66	68	70	72	74															
Boom angle (°) Radius (m)	88	83	78	73	68	63	58	53	48	43															
12																									
14																									
16																									
18																									
20																									
22																									
24																									
26																									
28																									
30																									
32																									
34																									
36																									
38																									
40																									
42																									
44																									
46																									
48																									
50																									
52																									
54																									
56																									
58																									
60																									
62																									
64																									
66																									
68																									
70																									
72																									

Notes: The load values of 25% orange parts in the thick frames depend on the boom strength.

Description: 1. The actual lifting capacity is the rated lifting capacity minus the weight of lifting hook, wire rope and all lifting appliances.

2. The rated lifting capacity shown in the table is the value when the weight is hoisted slowly and stably on a level and hard ground without traveling.

3. The rated load is within 75% of the tipover load.

LUFFING JIB LOAD CHARTS

S Rated Load Chart of SCC2500C Luffing Jib (without main hook, counterweight 85.2+5.8t)

Boom length (m)		46.5										Unit: (t)						
Jib length (m)		22					25					Jib length (m)						
Boom angle (°)		88	83	78	73	68	63	58	53	48	43	38	33	28	23	18	14	12
Radius(m)		88	83	78	73	68	63	58	53	48	43	38	33	28	23	18	14	12
12	54.6																	
14	54.6																	
16	49.9	47.0																
18	42.5	42.1																
20	36.2	37.9																
22	31.3	34.6	32.2															
24	26.5	31.8	29.5															
26	29.5	27.2																
28	27.1	25.2	23.4															
30	23.1	21.6																
32	21.3	19.9																
34	18.4	16.8																
36	17.1	15.7																
38	14.6	13.6																
40	13.7	12.6																
42	11.9	11.1																
44	11.2	10.4																
46																		
48																		
50																		
52																		
54																		
56																		
58																		
60																		
62																		
64																		
66																		
68																		
70																		
72																		
74																		

Notes: The load values of 25% orange parts in the thick frames depend on the boom strength.

Description: 1. The actual lifting capacity is the rated lifting capacity minus the weight of lifting hook, wire rope and all lifting appliances.

2. The rated lifting capacity shown in the table is the value when the weight is hoisted slowly and stably on a level and hard ground without traveling.

3. The rated load is within 75% of the tipover load.

LUFFING JIB LOAD CHARTS

S Rated Load Chart of SCC2500C Luffing Jib (without main hook, counterweight 85.2+5.8t)

Unit: (t)

		46.5																	
		31					34					37							
Boom length (m)	Jib length (m)	88	83	78	73	68	63	88	83	78	73	68	63	88	83	78	73	68	63
Radius(m)	Boom angle (°)																		
12	12																		
14	14																		
16	16	41.3																	
18	18	41.3	41.3																
20	20	37.2	36.2																
22	22	32.2	33.0	32.8	32.4														
24	24	28.4	30.4	28.9	29.8														
26	26	25.2	28.1	26.0	27.5														
28	28	22.5	26.0	24.1	25.5														
30	30	20.3	24.3	22.4	23.8	22.0													
32	32	18.4	22.7	20.9	19.4	20.5	21.5												
34	34	20.7	18.8	22.3	20.5	20.5	21.8	20.1											
36	36	18.8	20.7	19.4	18.0	19.1	17.4	20.5	18.9										
38	38	16.7	18.8	18.0	16.7	17.9	16.5	16.0	19.3	17.7									
40	40	15.7	15.6	14.1	16.7	15.5	14.7	17.6	16.7	15.3									
42	42	13.7	14.6	13.2	15.8	14.5	16.1	15.8	14.4										
44	44	12.9	13.7	12.3	13.6	12.4	14.8	14.8	13.6	12.4									
46	46	10.9	11.6	10.7	12.8	11.6	14.0	14.0	12.8	11.6									
48	48	10.3	10.9	10.1	10.9	10.9	13.2	13.2	12.0	10.9									
50	50	8.9	10.3	9.5	10.3	9.4	11.3	10.3	10.3	9.3									
52	52	8.4	8.9	8.4	8.8	8.8	10.7	9.7	8.7										
54	54				8.3		9.2	8.2	8.2	52									
56	56						8.8	7.8	7.8	54									
58	58							7.2	6.9	56									
60	60									58									
62	62									60									
64	64									62									
66	66									64									
68	68									66									
70	70									68									
72	72									70									
74	74									72									

Notes: The load values of 25% orange parts in the thick frames depend on the boom strength.

Description: 1. The actual lifting capacity is the rated lifting capacity minus the weight of lifting hook, wire rope and all lifting appliances.

2. The rated lifting capacity shown in the table is the value when the weight is hoisted slowly and stably on a level and hard ground without traveling.

3. The rated load is within 75% of the tipover load.

LUFFING JIB LOAD CHARTS

S Rated Load Chart of SCC2500C Luffing Jib (without main hook, counterweight 85.2+5.8t)

Unit: (t)

		46.5										49									
Boom length (m)		40					42					46					49				
Jib length (m)	Boom angle (°)	88	83	78	73	68	63	58	53	48	43	38	33	28	23	18	13	8	3	0	
Radius(m)	Radius (m)	88	83	78	73	68	63	58	53	48	43	38	33	28	23	18	13	8	3	0	
12	12																				
14	14																				
16	16	34.9																			
18	18	33.9	30.3																		
20	20	31.4	29.0	26.7																	
22	22	29.1	24.8	23.5	21.8																
24	24	26.3	25.8	23.2	20.3	18.8															
26	26	23.9	24.1	21.6	19.0	17.4															
28	28	21.8	23.8	20.3	17.8	16.3	15.3														
30	30	20.1	22.2	19.2	16.8	15.2	14.3	13.4													
32	32	18.6	20.9	18.1	15.7	14.1	13.4	12.7	11.9												
34	34	17.3	19.6	17.1	14.9	13.2	12.7	12.1	11.5	10.6											
36	36	16.0	18.5	15.9	14.6	13.0	12.5	11.9	11.3	10.7	9.9										
38	38	14.6	17.3	14.6	13.5	12.0	11.5	11.0	10.4	9.8	9.3	8.3									
40	40	13.5	16.1	13.5	12.4	11.0	10.5	10.0	9.4	8.9	8.3	7.7	6.8								
42	42	14.9	14.4	13.2	12.9	11.7	11.2	10.6	10.0	9.4	8.9	8.3	7.7	6.8							
44	44		13.7	12.4	12.9	11.7	11.2	10.6	10.0	9.4	8.9	8.3	7.7	6.8							
46	46		12.9	11.7	10.6	10.3	9.7	9.2	8.6	8.1	7.6	7.1	6.6	6.1	5.6						
48	48		11.1	10.0	11.9	10.8	9.7	9.2	8.6	8.1	7.6	7.1	6.6	6.1	5.6						
50	50		10.5	9.4	11.2	10.2	9.2	8.7	8.2	7.7	7.2	6.7	6.2	5.7	5.2						
52	52		8.9	8.0	10.7	9.6	8.7	8.2	7.7	7.2	6.7	6.2	5.7	5.2	4.7						
54	54		8.5	7.5	9.1	8.2	7.2	6.7	6.2	5.7	5.2	4.7	4.2	3.7	3.2						
56	56			7.1	8.7	7.8	6.9	6.4	5.9	5.4	4.9	4.4	3.9	3.4	2.9						
58	58			6.7		7.3	6.4	6.0	5.6	5.2	4.8	4.4	4.0	3.6	3.2						
60	60					7.0	6.1	5.8	5.4	5.0	4.6	4.2	3.8	3.4	3.0						
62	62						5.8	5.5	5.1	4.7	4.3	3.9	3.5	3.1	2.7						
64	64							5.6	5.2	4.8	4.4	4.0	3.6	3.2	2.8						
66	66								5.4	5.0	4.6	4.2	3.8	3.4	3.0						
68	68									4.8	4.4	4.0	3.6	3.2	2.8						
70	70										4.8	4.4	4.0	3.6	3.2						
72	72											4.8	4.4	4.0	3.6						

Notes: The load values of 25% orange parts in the thick frames depend on the boom strength.

Description: 1. The actual lifting capacity is the rated lifting capacity minus the weight of lifting hook, wire rope and all lifting appliances.

2. The rated lifting capacity shown in the table is the value when the weight is hoisted slowly and stably on a level and hard ground without traveling.

3. The rated load is within 75% of the tipover load.

LUFFING JIB LOAD CHARTS

S Rated Load Chart of SCC2500C Luffing Jib (without main hook, counterweight 85.2+5.8t)

Unit: (t)

Boom length (m)		46.5									
Jib length (m)	Radius (m)	52	55	58	61	63	66	69	72	75	78
Boom angle (°)	Radius (m)	88	83	78	73	68	63	58	53	48	43
12	12										
14	14										
16	16										
18	18										
20	20	17.1									
22	22	15.8	13.7	11.6	9.5						
24	24	14.6	12.6	10.7	8.8						
26	26	13.7	11.8	10.0	8.2						
28	28	12.8	11.0	9.3	7.5						
30	30	11.9	10.3	8.7	7.0	8.2					
32	32	11.1	9.5	7.9	6.2	7.5					
34	34	10.5	8.9	7.4	5.8	7.0					
36	36	9.9	8.3	6.7	5.1	6.5					
38	38	9.3	7.7	6.1	4.5	5.8					
40	40	8.8	7.1	5.5	3.9	5.1	6.5				
42	42	8.4	6.7	5.0	3.4	4.5	5.8				
44	44	8.0	6.3	4.6	2.9	3.9	5.2				
46	46	7.5	5.8	4.1	2.3	3.4	4.5				
48	48	7.1	5.4	3.7	1.9	2.9	4.0	5.1			
50	50	6.8	5.1	3.3	2.4	3.4	4.5				
52	52	6.5	5.5	3.7	1.9	2.9	3.9				
54	54	6.2	5.0	3.2	2.4	3.4					
56	56	6.5	5.5	3.8	2.0	2.9					
58	58	6.3	5.1	3.3	2.4						
60	60	6.6	5.5	3.8	2.0						
62	62	6.3	5.1	2.3							
64	64	6.6	5.1	4.0							
66	66	6.4	5.7	3.8							
68	68	5.4	4.4	3.6							
70	70	4.2									
72	72	4.0									

Notes: The load values of 25% orange parts in the thick frames depend on the boom strength.

Description: 1. The actual lifting capacity is the rated lifting capacity minus the weight of lifting hook, wire rope and all lifting appliances.

2. The rated lifting capacity shown in the table is the value when the weight is hoisted slowly and stably on a level and hard ground without traveling.

3. The rated load is within 75% of the tipover load.

LUFFING JIB LOAD CHARTS

SRated Load Chart of SCC2500C Luffing Jib (without main hook, counterweight 85.2+5.8t)

Unit: (t)

		49.5															
		22					25					28					
		88	83	78	73	68	63	68	73	78	83	88	83	78	73	68	63
Boom length (m)	Jib length (m)																
		Radius (m)															
		Boom angle (°)															
12	54.6	41.3															12
14	54.6	41.3									41.3						14
16	48.9	41.3									41.3						16
18	42.8	40.9									41.3						18
20	36.4	36.9									37.2	36.8					20
22	31.4	33.7									32.1	33.7					22
24	26.9	31.0	28.5								28.2	30.9	28.6				24
26		28.7	26.3								24.9	28.7	26.3				26
28		26.8	24.4								26.6	24.5					28
30		22.7	20.8								24.7	22.6	21.0				30
32		20.9	19.5								22.4	20.9	19.3				32
34		18.1	16.2								19.3	17.9					34
36		16.8	15.1								18.0	16.6	15.0				36
38		14.1									15.5	14.0					38
40		13.2	12.1								14.5	13.1					40
42		11.4									12.2	11.2					42
44		10.7									11.5	10.5					44
46											9.8						46
48											9.3						48
50																	50
52																	52
54																	54
56																	56
58																	58
60																	60
62																	62
64																	64
66																	66
68																	68
70																	70
72																	72
74																	74

Notes: The load values of 25% orange parts in the thick frames depend on the boom strength.

Description: 1. The actual lifting capacity is the rated lifting capacity minus the weight of lifting hook, wire rope and all lifting appliances.

2. The rated lifting capacity shown in the table is the value when the weight is hoisted slowly and stably on a level and hard ground without travelling.

3. The rated load is within 75% of the tipover load.

LUFFING JIB LOAD CHARTS

S Rated Load Chart of SCC2500C Luffing Jib (without main hook, counterweight 85.2+5.8t)

Unit: (t)

		49.5																				
		31					34					37	37									
		88	83	78	73	68	63	88	83	78	73	68	63	88	83	78	73	68	63			
Jib length (m) Radius(m)	Boom angle (°)	Booms length (m)																				
		31					34					37					37					37
12																					12	
14	41.3																				14	
16	41.3																				16	
18	41.3																				18	
20	37.4	35.3																			20	
22	32.4	32.2																			22	
24	28.5	29.6																			24	
26	25.3	27.3																			26	
28	22.6	25.4	23.3																		28	
30	20.3	23.7	21.7																		30	
32	18.4	22.2	20.3																		32	
34		20.9	19.0	17.3																	34	
36		19.4	17.6	16.3																	36	
38		17.2	16.4	15.3																	38	
40			15.4	14.3	12.6																40	
42			14.5	13.5	11.8																42	
44				12.6	11.1																44	
46				11.9	10.4	9.5															46	
48				9.9	8.9	8.9															48	
50				9.4	8.4																50	
52					7.9	7.9															52	
54						7.4															54	
56																					56	
58																					58	
60																					60	
62																					62	
64																					64	
66																					66	
68																					68	
70																					70	
72																					72	
74																					74	

Notes: The load values of 25% orange parts in the thick frames depend on the boom strength.

Description: 1. The actual lifting capacity is the rated lifting capacity minus the weight of lifting hook, wire rope and all lifting appliances.

2. The rated lifting capacity shown in the table is the value when the weight is hoisted slowly and stably on a level and hard ground without traveling.

3. The rated load is within 75% of the tipover load.

LUFFING JIB LOAD CHARTS

S Rated Load Chart of SCC2500C Luffing Jib (without main hook, counterweight 85.2+5.8t)

Unit: (t)

		49.5											
		40			43			46			49		
Boom length (m)	Jib length (m)	88	83	78	73	68	63	58	53	48	43	38	33
Radius(m)	Boom angle (°)												
14													
16	34.1												
18	33.4												
20	31.5												
22	29.0												
24	26.3 27.3												
26	24.0 25.3												
28	21.9 23.6												
30	20.2 22.0												
32	18.7 20.7 18.9												
34	17.3 19.4 17.7												
36	16.0 18.3 16.6												
38	14.6 17.3 15.7												
40	13.5 16.1 14.7 13.3												
42	15.0 14.0 12.5												
44	13.2 11.9												
46	12.5 11.2												
48	11.9 10.6 9.4												
50	10.0 8.9												
52	9.5 8.4												
54	8.0 6.9												
56	7.5 6.5												
58	6.1												
60	5.8												
62	5.5												
64													
66													
68													
70													
72													
74													

Notes: The load values of 25% orange parts in the thick frames depend on the boom strength.

Description: 1. The actual lifting capacity is the rated lifting capacity minus the weight of lifting hook, wire rope and all lifting appliances.

2. The rated lifting capacity shown in the table is the value when the weight is hoisted slowly and stably on a level and hard ground without traveling.

3. The rated load is within 75% of the tipover load.

LUFFING JIB LOAD CHARTS

SRated Load Chart of SCC2500C Luffing Jib (without main hook, counterweight 85.2+5.8t)

Unit: (t)

Boom length (m)		49.5											Boom length (m)																									
Jib length (m)	Radius (m)	52	55	58	61	63	66	69	72	75	78	81	84	87	90	Jib length (m)	Radius (m)																					
14	16	18	20	22	24	26	28	30	32	34	36	38	40	42	44	46	48	50	52	54	56	58	60	62	64	66	68	70	72	74								
14	16																																					
18	20																																					
22	24	17.1																																				
26	28	15.8	13.7																																			
30	32	14.7	12.7	11.6																																		
34	36	13.7	11.7	10.7	9.8																																	
38	40	12.8	10.7	9.8	8.7	7.9																																
42	44	11.9	9.9	9.1	8.1	7.2	6.3																															
46	48	11.2	9.2	8.4	7.5	6.6	5.7	4.9																														
50	52	10.5	8.5	7.8	7.0	6.1	5.2	4.4	3.6																													
54	56	9.9	7.9	7.2	6.4	5.5	4.6	3.8	3.0	2.2																												
58	60	9.4	7.4	6.7	5.9	5.0	4.2	3.4	2.6	1.8	1.0																											
62	64	8.8	6.8	6.1	5.3	4.5	3.7	2.9	2.1	1.3	0.5																											
66	68	8.4	6.4	5.7	4.9	4.1	3.3	2.5	1.7	0.9	0.1																											
70	72	8.0	6.0	5.3	4.5	3.7	2.9	2.1	1.3	0.5																												
74		7.5	5.5	4.8	4.0	3.2	2.4	1.6	0.8																													

Notes: The load values of 25% orange parts in the thick frames depend on the boom strength.

Description: 1. The actual lifting capacity is the rated lifting capacity minus the weight of lifting hook, wire rope and all lifting appliances.

2. The rated lifting capacity shown in the table is the value when the weight is hoisted slowly and stably on a level and hard ground without traveling.

3. The rated load is within 75% of the tipover load.

LUFFING JIB LOAD CHARTS

SRated Load Chart of SCC2500C Luffing Jib (without main hook, counterweight 85.2+5.8t)

Unit: (t)

Boom length (m)		52.5																
		22			25			28			30							
Jib length (m)	Boom angle (°)	88	83	78	73	68	63	58	53	48	43	38	33	28	23	18	14	12
		Radius(m)																
12	41.3																	
14	41.3																	
16	41.3																	
18	41.3	39.8																
20	37.0	35.9																
22	31.9	32.8																
24	27.5	30.2	27.5															
26	27.9	25.4																
28	26.0	23.6																
30	22.0	19.9																
32	20.6	18.6																
34	19.2	17.4																
36	16.3	14.7																
38	15.3	13.7																
40	12.8	12.8																
42	11.9	10.7																
44	10.0	9.4																
46	9.4																	
48																		
50																		
52																		
54																		
56																		
58																		
60																		
62																		
64																		
66																		
68																		
70																		
72																		
74																		

Notes: The load values of 25% orange parts in the thick frames depend on the boom strength.

Description: 1. The actual lifting capacity is the rated lifting capacity minus the weight of lifting hook, wire rope and all lifting appliances.

2. The rated lifting capacity shown in the table is the value when the weight is hoisted slowly and stably on a level and hard ground without traveling.

3. The rated load is within 75% of the tipover load.

LUFFING JIB LOAD CHARTS

SRated Load Chart of SCC2500C Luffing Jib (without main hook, counterweight 85.2+5.8t)

Unit: (t)

Boom length (m)	52.5										Boom length (m)				
	31		34		37		37		63			Boom angle (°) Radius (m)			
Jib length (m)	88	83	78	73	68	63	88	83	78	73	68		63	68	63
12															
14	41.3														14
16	41.3						39.0								16
18	40.8						38.5					36.6			18
20	37.0	34.5					36.3					35.6			20
22	33.2	31.4					32.8					32.5			22
24	29.1	28.9					29.4	28.3				29.7	27.7		24
26	26.0	26.6					26.2	26.1				26.3	25.6		26
28	23.1	24.7	22.5				23.3	24.2				23.6	23.8		28
30	20.7	23.1	20.9				21.0	22.6	20.5			21.2	22.1	20.0	30
32	18.8	21.6	19.6				19.0	21.2	19.1			19.3	20.7	18.7	32
34		20.4	18.4	16.5			17.1	19.9	18.0			17.5	19.4	17.5	34
36		19.3	17.3	15.5				18.8	16.9			16.1	18.3	16.4	36
38		17.9	16.3	14.7				17.6	15.9	14.3		14.8	17.3	15.5	38
40			15.3	13.9					15.0	13.5			16.5	14.7	40
42			14.3	13.1	11.5				14.1	12.7			15.2	13.9	42
44				12.2	10.8					12.0	10.6		14.0	13.3	44
46				11.5	10.1					11.3	9.9		12.5	11.1	46
48					9.6	8.2				9.4			11.8	10.5	48
50					9.0	7.7				8.9			9.9	8.8	50
52						7.2					7.0		9.4	8.3	52
54						6.8					6.6		7.8	6.4	54
56											6.2			7.3	56
58														5.6	58
60														5.3	60
62															62
64															64
66															66
68															68
70															70
72															72
74															74

Notes: The load values of 25% orange parts in the thick frames depend on the boom strength.

Description: 1. The actual lifting capacity is the rated lifting capacity minus the weight of lifting hook, wire rope and all lifting appliances.

2. The rated lifting capacity shown in the table is the value when the weight is hoisted slowly and stably on a level and hard ground without traveling.

3. The rated load is within 75% of the tipover load.

LUFFING JIB LOAD CHARTS

S Rated Load Chart of SCC2500C Luffing Jib (without main hook, counterweight 85.2+5.8t)

Unit: (t)

		52.5																							
		40				43				46				49											
Boom length (m)	Jib length (m)	88	83	78	73	68	63	58	53	88	83	78	73	68	63	58	53	88	83	78	73	68	63	58	53
Radius(m)	Boom angle (°)																								
14	14																								
16	16																								
18	18	31.7								27.3															
20	20	31.3								26.9								20.5							
22	22	28.8								25.0								18.9							
24	24	26.5								23.3								17.5							
26	26	24.0	25.1							21.7	24.7							16.4							
28	28	22.0	23.4							20.4	23.1							15.3	17.7						
30	30	20.2	21.9							19.2	21.6							14.3	16.5						
32	32	18.7	20.5							18.2	20.3							13.5	15.5						
34	34	17.3	19.3	17.5						17.1	19.2	17.5						12.7	14.6						
36	36	16.1	18.2	16.5						16.0	18.2	16.5						11.9	13.7						
38	38	14.7	17.2	15.6						14.7	17.1	15.6						11.2	12.9	13.5					
40	40	13.6	16.4	14.7	13.1					13.6	16.3	14.7	13.2					10.4	12.2	12.6					
42	42	15.4	13.9	12.4						12.4	15.5	14.0	12.4					9.7	11.6	11.9					
44	44	14.1	13.2	11.7						11.5	14.3	13.1	11.7					9.1	10.7	11.2					
46	46	12.4	11.2							13.3	12.3	11.2						8.3	10.1	10.6	10.5				
48	48	11.7	10.5	9.1						12.2	11.6	10.5	8.9					9.5	10.8	10.2					
50	50	9.9	8.5							11.3	11.0	10.0	8.3					10.1	10.2	9.7					
52	52	9.4	8.0							10.4	9.4	7.8						9.7	9.2						
54	54		7.5							9.9	9.0	7.3						9.2	8.8	7.2					
56	56		7.1	5.9							8.5	6.8	5.7					8.3	6.7						
58	58			5.5							8.1	6.5	5.4					7.9	6.4						
60	60			5.2							6.1	5.1						6.0							
62	62			4.8							5.8	4.7						5.7	4.5						
64	64										4.5							4.3							
66	66										4.2							4.0							
68	68																	3.6							
70	70																								
72	72																								
74	74																								
76	76																								

Notes: The load values of 25% orange parts in the thick frames depend on the boom strength.

Description: 1. The actual lifting capacity is the rated lifting capacity minus the weight of lifting hook, wire rope and all lifting appliances.

2. The rated lifting capacity shown in the table is the value when the weight is hoisted slowly and stably on a level and hard ground without traveling.

3. The rated load is within 75% of the tipover load.

LUFFING JIB LOAD CHARTS

S Rated Load Chart of SCC2500C Luffing Jib (without main hook, counterweight 85.2+5.8t)

Unit: (t)

Boom length (m) Jib length (m) Radius (m)	52.5										Boom length (m) Jib length (m) Radius (m)
	52	55	58	61	63	66	68	70	72	74	
14											14
16											16
18											18
20	17.2										20
22	15.9	13.8	11.7	9.6							22
24	14.7	12.7	10.7	8.8							24
26	13.7	11.7	9.8	7.9							26
28	12.8	10.8	8.8	6.8							28
30	11.9	9.9	7.9	5.8							30
32	11.2	9.1	7.1	5.0	7.8						32
34	10.5	8.4	6.3	4.2	7.1						34
36	9.9	7.8	5.6	3.5	6.7						36
38	9.4	7.2	5.0	2.8	6.1						38
40	8.9	6.6	4.4	2.1	5.4	6.8					40
42	8.4	6.0	3.7	4.7	6.3	5.6	4.4				42
44	8.0	7.3	5.7	4.1	5.6	4.9	4.4				44
46	7.5	6.9	5.2	3.6	4.9	4.3	4.4				46
48	7.1	6.4	4.7	3.1	4.3	3.7	4.4				48
50	6.8	6.0	4.3	2.6	3.7	3.0	4.4				50
52	6.5	5.6	3.9	2.1	3.2	2.4	4.4				52
54	6.2	5.2	3.4	2.7	3.9	3.3	4.4				54
56	6.6	5.7	4.0	2.2	3.3	2.9	4.4				56
58	6.3	5.4	3.6	1.8	2.9	2.3	4.4				58
60	6.7	4.9	3.1	2.3	3.9	3.1	4.4				60
62	6.5	5.2	3.6	1.9	3.6	3.1	4.4				62
64	6.4	4.8	3.4	3.1	3.4	3.1	4.4				64
66	6.1	3.2	3.2		3.2	3.2	4.4				66
68	4.5	3.0	3.0		3.0	3.0	4.4				68
70	4.3	2.9	2.9		2.9	2.9	4.4				70
72	4.1	2.7	2.7		2.7	2.7	4.4				72
74		2.8	2.8		2.8	2.8	4.4				74
76		2.6	2.6		2.6	2.6	4.4				76

Notes: The load values of 25% orange parts in the thick frames depend on the boom strength.

Description: 1. The actual lifting capacity is the rated lifting capacity minus the weight of lifting hook, wire rope and all lifting appliances.

2. The rated lifting capacity shown in the table is the value when the weight is hoisted slowly and stably on a level and hard ground without traveling.

3. The rated load is within 75% of the tipover load.

LUFFING JIB LOAD CHARTS

S Rated Load Chart of SCC2500C Luffing Jib (without main hook, counterweight 85.2+5.8t)

Unit: (t)

		55.5															
		22					25					28					
Boom length (m)	Jib length (m)	88	83	78	73	68	63	68	73	78	83	88	83	78	73	68	63
Radius (m)	Boom angle (°)																
12	41.3																
14	41.3											41.3					
16	41.3										41.0	40.7					
18	38.0	38.6									37.4	37.2					
20	35.1	34.9								35.0	34.5	34.2					
22	32.1	31.8								31.9	31.9	31.7	31.2				
24	27.9	29.3	26.4							29.4	28.9	29.0	28.7				
26		27.1	24.4						24.6	25.5	25.7	26.5					
28		25.3	22.6						22.7	22.1	22.1	22.2	22.2				
30		23.8	21.1	18.9					21.2	23.7	23.1	20.7					
32			19.8	17.6					18.3	22.3	21.7	19.4					
34			18.7	16.5					16.8	18.8	18.2						
36			15.6	13.8					15.7	17.4	17.0	15.2					
38			14.8	13.0					14.6	14.6	14.2						
40				12.1					13.7	13.7	13.4						
42				11.4	9.4				12.8	12.8	12.6	11.1					
44				10.7	9.2				10.6	10.6	10.4	9.7					
46				8.6					10.0	10.0	9.7						
48				8.1					7.8	7.8	7.6						
50									7.2	7.2	7.1						
52											6.7						
54																	
56																	
58																	
60																	
62																	
64																	
66																	
68																	
70																	
72																	
74																	

Notes: The load values of 25% orange parts in the thick frames depend on the boom strength.
 Description: 1. The actual lifting capacity is the rated lifting capacity minus the weight of lifting hook, wire rope and all lifting appliances.
 2. The rated lifting capacity shown in the table is the value when the weight is hoisted slowly and stably on a level and hard ground without traveling.
 3. The rated load is within 75% of the tipover load.

LUFFING JIB LOAD CHARTS

S Rated Load Chart of SCC2500C Luffing Jib (without main hook, counterweight 85.2+5.8t)

Unit: (t)

		55.5															
		31					34					37					
Boom length (m)	Jib length (m)	88	83	78	73	68	63	58	53	48	43	38	33	28	23	18	14
Boom angle (°)	Radius (m)	88	83	78	73	68	63	58	53	48	43	38	33	28	23	18	14
12																	
14		41.3															
16		40.5															
18		36.9															
20		34.0															
22		31.4	30.5														
24		29.2	28.1														
26		25.9	25.9														
28		23.2	24.1	21.6													
30		20.8	22.4	20.2													
32		18.8	21.0	18.9													
34		15.9	19.8	17.6													
36			18.8	16.6	14.7												
38			17.9	15.7	13.9												
40			14.9	13.1													
42			14.0	12.4	10.8												
44				11.8	10.1												
46				11.1	9.5												
48				10.5	8.9	7.4											
50					8.4	6.9											
52					7.9	6.5											
54						6.1											
56						5.7											
58																	
60																	
62																	
64																	
66																	
68																	
70																	
72																	
74																	

Notes: The load values of 25% orange parts in the thick frames depend on the boom strength.

Description: 1. The actual lifting capacity is the rated lifting capacity minus the weight of lifting hook, wire rope and all lifting appliances.

2. The rated lifting capacity shown in the table is the value when the weight is hoisted slowly and stably on a level and hard ground without travelling.

3. The rated load is within 75% of the tipover load.

LUFFING JIB LOAD CHARTS

S Rated Load Chart of SCC2500C Luffing Jib (without main hook, counterweight 85.2+5.8t)

Unit: (t)

Jib length (m)	55.5											Jib length (m)					
	40	43	46	49													
Boom length (m)	88	83	78	73	68	63	58	53	48	43	38	33	28	23	18	14	
Boom angle (°)	14	16	18	20	22	24	26	28	30	32	34	36	38	40	42	44	
Radius (m)																	
18	29.8																
20	29.3	27.3															
22	27.8	27.0	23.8														
24	25.9	25.0	22.0	20.5													
26	24.1	23.3	20.4	17.6													
28	22.0	21.8	19.1	16.4													
30	20.3	20.4	17.9	15.3	17.9												
32	18.8	19.3	16.8	14.4	16.6												
34	17.4	18.2	15.8	13.5	15.5												
36	16.1	17.2	14.5	12.8	14.5												
38	14.7	16.0	14.0	11.9	13.6												
40	13.6	14.7	12.9	11.2	12.8	13.4											
42	15.1	13.4	12.0	10.4	12.1	12.6											
44	14.3	12.7	11.2	9.8	11.4	11.9											
46	12.0	10.5	10.3	10.2	10.6	10.6											
48	11.5	10.0	11.8	11.0	10.7	10.8	10.2	10.1	9.3	9.0	9.5	9.0	9.5	9.0	9.5	9.0	8.5
50																	
52																	
54																	
56																	
58																	
60																	
62																	
64																	
66																	
68																	
70																	
72																	
74																	
76																	

Notes: The load values of 25% orange parts in the thick frames depend on the boom strength.

- Description: 1. The actual lifting capacity is the rated lifting capacity minus the weight of lifting hook, wire rope and all lifting appliances.
 2. The rated lifting capacity shown in the table is the value when the weight is hoisted slowly and stably on a level and hard ground without traveling.
 3. The rated load is within 75% of the tipover load.

LUFFING JIB LOAD CHARTS

SRated Load Chart of SCC2500C Luffing Jib (without main hook, counterweight 85.2+5.8t)

Unit: (t)

Boom length (m)		55.5											61		63		68		73		78		83		88		92		97		10.8				
Jib length (m)	Radius (m)	14	16	18	20	22	24	26	28	30	32	34	36	38	40	42	44	46	48	50	52	54	56	58	60	62	64	66	68	70	72	74	76		
14	14																																		
16	16																																		
18	18																																		
20	20																																		
22	22																																		
24	24																																		
26	26																																		
28	28																																		
30	30																																		
32	32																																		
34	34																																		
36	36																																		
38	38																																		
40	40																																		
42	42																																		
44	44																																		
46	46																																		
48	48																																		
50	50																																		
52	52																																		
54	54																																		
56	56																																		
58	58																																		
60	60																																		
62	62																																		
64	64																																		
66	66																																		
68	68																																		
70	70																																		
72	72																																		
74	74																																		
76	76																																		

Notes: The load values of 25% orange parts in the thick frames depend on the boom strength.

Description: 1. The actual lifting capacity is the rated lifting capacity minus the weight of lifting hook, wire rope and all lifting appliances.

2. The rated lifting capacity shown in the table is the value when the weight is hoisted slowly and stably on a level and hard ground without traveling.

3. The rated load is within 75% of the tipover load.

LUFFING JIB LOAD CHARTS

S Rated Load Chart of SCC2500C Luffing Jib (without main hook, counterweight 85.2+5.8t)

Unit: (t)

		58.5																		
		22					25													
		88	83	78	73	68	63	88	83	78	73	68	63	88	83	78	73	68	63	
Boom length (m)	Jib length (m)	Radius (m)																		
Boom angle (°)	Jib length (m)	Radius (m)																		
14	40.2													39.4						14
16	36.4													35.6						16
18	33.3													32.5						18
20	30.6													29.8						20
22	28.5													27.6						22
24	26.7													25.7						24
26	26.4			23.6										24.1						26
28	24.6			21.8										21.8						28
30	23.2			20.4										22.5						30
32	19.1			16.8										21.1						32
34	18.0			15.7										17.6						34
36	14.8			14.8										16.6						36
38	14.0			14.0										15.6						38
40	13.4			13.4										13.0						40
42	10.8			10.8										12.2						42
44	10.2			10.2										9.8						44
46	8.2			8.2										9.2						46
48	7.5			7.5										8.7						48
50														6.5						50
52														6.1						52
54														5.2						54
56																				56
58																				58
60																				60
62																				62
64																				64
66																				66
68																				68
70																				70
72																				72
74																				74

Notes: The load values of 25% orange parts in the thick frames depend on the boom strength.

Description: 1. The actual lifting capacity is the rated lifting capacity minus the weight of lifting hook, wire rope and all lifting appliances.

2. The rated lifting capacity shown in the table is the value when the weight is hoisted slowly and stably on a level and hard ground without travelling.

3. The rated load is within 75% of the tipover load.

LUFFING JIB LOAD CHARTS

SRated Load Chart of SCC2500C Luffing Jib (without main hook, counterweight 85.2+5.8t)

Unit: (t)

		58.5															
		31					34					37					
Boom length (m)	Jib length (m)	88	83	78	73	68	63	68	73	78	83	88	83	78	73	68	63
Boom angle (°)	Radius (m)	14	16	18	20	22	24	26	28	30	32	34	36	38	40	42	44
38.8	31.2																
35.1	29.7																
32.0	28.4																
29.4	27.0																
27.1	25.1																
25.3	23.5																
23.7	22.0																
22.2	20.7																
20.9	19.2																
19.2	17.0																
16.4	18.3																
18.3	17.3																
17.3	15.2																
15.2	14.4																
14.4	13.7																
13.7	13.1																
11.2	10.7																
10.7	10.2																
9.1	8.1																
8.6	7.5																
8.1	5.5																
6.2	5.1																
5.8	4.8																
5.5	4.6																
5.1	4.3																
4.8	3.9																
8.1	8.4																
7.9	7.3																
7.7	5.3																
7.1	4.9																
6.7	4.6																
6.3	4.3																
5.9	3.9																
4.4	3.6																
4.1																	
3.9																	
3.6																	
6.6																	
6.8																	
7.0																	
7.2																	
7.4																	

Notes: The load values of 25% orange parts in the thick frames depend on the boom strength.
 Description: 1. The actual lifting capacity is the rated lifting capacity minus the weight of lifting hook, wire rope and all lifting appliances.
 2. The rated lifting capacity shown in the table is the value when the weight is hoisted slowly and stably on a level and hard ground without travelling.
 3. The rated load is within 75% of the tipover load.

LUFFING JIB LOAD CHARTS

S Rated Load Chart of SCC2500C Luffing Jib (without main hook, counterweight 85.2+5.8t)

Unit: (t)

		58.5																				
		43						46						49		63						
Boom length (m)	Jib length (m)	88	83	78	73	68	63	88	83	78	73	68	63	83	78	73	68	83	78	73	68	63
Boom angle (°)	Jib length (m)																					
Radius (m)	Boom angle (°)																					
14																						
16		27.1																				
18		26.9	26.4																			
20		26.2	25.1																			
22		25.1	23.4																			
24		23.4	21.8	24.3																		
26		21.9	20.5	22.5																		
28		20.5	19.3	21.0																		
30		19.3	18.2	19.7																		
32		18.3	17.2	18.5	16.3																	
34		16.8	16.0	17.4	15.4																	
36		15.4	14.7	15.4																		
38		14.2	13.6	14.5																		
40		15.6	14.2	13.7	11.9																	
42		14.7	13.0	11.3																		
44		13.9	12.3	10.7																		
46		11.6	11.6	10.1																		
48		11.0	10.4	9.5	7.6																	
50		10.4	9.0	7.1																		
52		8.6	6.7																			
54		8.1	6.3																			
56		5.9	4.4																			
58		5.5	4.1																			
60		3.8																				
62		3.6																				
64		3.3																				
66																						
68																						
70																						
72																						
74																						
76																						

Notes: The load values of 25% orange parts in the thick frames depend on the boom strength.
 Description: 1. The actual lifting capacity is the rated lifting capacity minus the weight of lifting hook, wire rope and all lifting appliances.
 2. The rated lifting capacity shown in the table is the value when the weight is hoisted slowly and stably on a level and hard ground without traveling.
 3. The rated load is within 75% of the tipover load.

LUFFING JIB LOAD CHARTS

S Rated Load Chart of SCC2500C Luffing Jib (without main hook, counterweight 85.2+5.8t)

		58.5										61											
		55					58					63					68						
		52		53		54		55		56		57		58		59		60		61		62	
Boom length (m)	Jib length (m)	88	83	78	73	68	63	58	53	48	43	38	33	28	23	18	13	8	3	0	0	0	0
Boom angle (°)	Radius (m)	14	16	18	20	22	24	26	28	30	32	34	36	38	40	42	44	46	48	50	52	54	56
14	14																						
16	16																						
18	18																						
20	20	17.3																					
22	22	16.0						11.9															
24	24	14.8						10.3															
26	26	13.8						9.7															
28	28	12.9						9.2															
30	30	12.0	14.4					8.4	10.0														
32	32	11.2	13.4					7.9	9.5														
34	34	10.5	12.4					7.2	8.9														
36	36	9.9	11.6					6.8	8.1														
38	38	9.4	10.9	13.0				6.2	7.7	9.2													
40	40	8.9	10.3	12.1				5.8	7.0	8.4													
42	42	8.4	9.7	11.3				5.5	6.6	8.0													
44	44	8.0	9.2	10.7				5.0	6.0	7.2													
46	46	7.5	8.7	10.1				4.7	5.7	6.8													
48	48	7.1	8.3	9.5	8.7			4.2	5.2	6.5	7.0												
50	50	6.8	7.8	9.0	8.2			3.9	4.9	5.9	6.3												
52	52	6.5	7.4	8.5	7.8			3.4	4.3	5.6	6.0												
54	54	6.2	7.0	8.1	7.3			2.7	4.1	5.0	5.4												
56	56	6.7	7.7	7.0	5.5			3.4	5.3	6.2	6.1	6.8											
58	58	6.4	7.2	6.7	5.1			4.3	5.7	5.7	5.0	4.6	5.0										
60	60	6.9	6.4	4.8				3.5	5.5	5.4	4.6	4.4	4.4	4.4									
62	62	6.6	6.0	4.5				3.4	4.4	4.9	4.3	3.8	3.8	4.2									
64	64	6.3	5.7	4.2				4.2	4.6	3.9	3.7	2.7	3.6	3.7									
66	66		5.4	3.9				4.4	3.7		3.4	3.4	3.4	3.4									
68	68		5.1	3.7				4.2	3.3		2.6	3.0	2.6	3.0									
70	70		3.4					3.2	3.0		2.7		2.7										
72	72		3.2					2.3															
74	74		3.0																				
76	76																						

Notes: The load values of 25% orange parts in the thick frames depend on the boom strength.

Description: 1. The actual lifting capacity is the rated lifting capacity minus the weight of lifting hook, wire rope and all lifting appliances.

2. The rated lifting capacity shown in the table is the value when the weight is hoisted slowly and stably on a level and hard ground without travelling.

3. The rated load is within 75% of the tipover load.

LUFFING JIB LOAD CHARTS

SRated Load Chart of SCC2500C Luffing Jib (without main hook, counterweight 85.2+5.8t)

Unit: (t)

		61.5																	
		22					25					28		Boom length (m)					
		88	83	78	73	68	63	88	83	78	73	68	63	88	83	78	73	68	63
Jib length (m)	Radius (m)																		
14	40.1							39.9											37.9
16	36.1							34.3											32.5
18	29.1							28.8											28.4
20	26.4		33.7					26.2											26.0
22	24.2	30.8					33.5	24.1											23.9
24	22.7	28.2					27.5	22.5											22.3
26	21.2	24.9					24.6	21.0											20.8
28	20.1	23.8	20.2				23.4	19.9		20.1									19.6
30	19.0	22.0	19.9				21.6	18.8		19.4									18.5
32	18.3	20.6	17.1				20.2	18.0		17.2									17.6
34		19.2	16.0				18.9	17.9		16.1									17.0
36		18.2	15.1	13.0			17.9	15.2	13.1	15.3									17.5
38			14.2	12.1				14.3	12.2	14.4	12.3								16.8
40			13.6	11.3				13.7	11.4	13.7	11.6								17.5
42			12.9	10.8	10.0			13.0	10.9	9.8	13.0	11.0							16.8
44			10.2	9.4				10.3	9.2	12.4	10.4	9.0							17.5
46			9.7	8.7				9.8	8.6										17.5
48			9.4	8.5				9.5	8.3										17.5
50			8.0	6.3				7.8	6.0										17.5
52			7.3	5.6				7.1	5.4										17.5
54			4.9	4.9				4.8	4.8										17.5
56			4.6	4.6				4.5	4.5										17.5
58																			17.5
60																			17.5
62																			17.5
64																			17.5
66																			17.5
68																			17.5
70																			17.5
72																			17.5
74																			17.5

Notes: The load values of 25% orange parts in the thick frames depend on the boom strength.

Description: 1. The actual lifting capacity is the rated lifting capacity minus the weight of lifting hook, wire rope and all lifting appliances.

2. The rated lifting capacity shown in the table is the value when the weight is hoisted slowly and stably on a level and hard ground without travelling.

3. The rated load is within 75% of the tipover load.

LUFFING JIB LOAD CHARTS

S Rated Load Chart of SCC2500C Luffing Jib (without main hook, counterweight 85.2+5.8t)

		61.5																				
		31					34					37		Unit: (t)								
Boom length (m)	Jib length (m)	88	83	78	73	68	63	88	83	78	73	68	63	88	83	78	73	68	63	Boom length (m)	Jib length (m)	
Radius(ft)	Boom angle (°)																				Boom angle (°)	Radius (m)
14	34.2																				14	14
16	30.8																				16	16
18	28.1																				18	18
20	25.8																				20	20
22	23.8																				22	22
24	22.1																				24	24
26	20.6																				26	26
28	19.4																				28	28
30	18.3																				30	30
32	17.3																				32	32
34	16.6																				34	34
36	16.6																				36	36
38	16.4																				38	38
40	16.4																				40	40
42	16.4																				42	42
44	16.4																				44	44
46	16.4																				46	46
48	16.4																				48	48
50	16.4																				50	50
52	16.4																				52	52
54	16.4																				54	54
56	16.4																				56	56
58	16.4																				58	58
60	16.4																				60	60
62	16.4																				62	62
64	16.4																				64	64
66	16.4																				66	66
68	16.4																				68	68
70	16.4																				70	70
72	16.4																				72	72
74	16.4																				74	74

Notes: The load values of 25% orange parts in the thick frames depend on the boom strength.

Description: 1. The actual lifting capacity is the rated lifting capacity minus the weight of lifting hook, wire rope and all lifting appliances.

2. The rated lifting capacity shown in the table is the value when the weight is hoisted slowly and stably on a level and hard ground without traveling.

3. The rated load is within 75% of the tipover load.

LUFFING JIB LOAD CHARTS

SRated Load Chart of SCC2500C Luffing Jib (without main hook, counterweight 85.2+5.8t)

Boom length (m)		61.5										Unit: (t)	
Jib length (m)	Radius (m)	40	43	46	49	52	55	58	61	64	67	70	74
Boom length (m)	Jib length (m)												
Boom angle (°)	Radius (m)												
14	14												
16	16												
18	18	26.6											
20	20	25.2	25.9										
22	22	23.3	23.1	22.5									
24	24	21.5	21.3	20.7	19.9								
26	26	20.0	19.8	19.1	18.4	17.8							
28	28	18.7	18.5	17.8	17.0	16.6	15.8						
30	30	17.5	17.3	16.6	15.8	15.6	14.7	13.8	16.2				
32	32	16.5	16.2	15.6	14.6	14.6	13.7	12.9	15.1	16.2			
34	34	15.6	15.3	14.6	13.7	13.7	12.8	12.2	14.1	14.1	13.3		
36	36	14.8	14.5	13.7	13.0	13.0	12.1	11.4	13.3	11.4	10.5		
38	38	14.1	13.8	13.0	12.3	12.3	11.4	10.8	12.4	10.5	10.5		
40	40	13.0	13.1	12.3	11.7	11.7	10.8	10.3	11.7	10.0	10.0		
42	42	12.4	12.4	11.6	11.1	11.1	10.2	9.7	11.1	9.2	9.2		
44	44	13.3	13.0	12.1	11.6	11.6	10.7	10.2	11.1	9.2	9.2		
46	46	11.5	12.3	11.2	10.6	10.6	9.8	9.3	10.5	8.5	8.5		
48	48	10.9	11.8	10.6	10.1	10.1	9.3	8.8	10.0	8.1	8.1		
50	50	10.4	11.4	10.2	9.7	9.7	8.9	8.4	9.5	7.5	7.5		
52	52	8.4	9.2	8.1	7.8	7.8	7.1	6.6	8.0	6.1	6.1		
54	54	8.0	9.2	7.8	7.5	7.5	6.8	6.3	7.5	5.5	5.5		
56	56	5.5	8.8	7.2	6.9	6.9	6.2	5.7	6.8	4.8	4.8		
58	58	5.0	6.8	5.5	5.2	5.2	4.5	4.0	5.5	3.8	3.8		
60	60	4.7	6.5	5.2	4.9	4.9	4.2	3.7	5.0	3.5	3.5		
62	62	4.4	4.2	3.9	3.6	3.6	3.0	2.5	4.4	3.0	3.0		
64	64		4.0	3.6	3.3	3.3	2.8	2.3	3.9	2.7	2.7		
66	66			3.7	3.3	3.3	2.8	2.3	3.6	2.5	2.5		
68	68												
70	70												
72	72												
74	74												

Notes: The load values of 25% orange parts in the thick frames depend on the boom strength.

Description: 1. The actual lifting capacity is the rated lifting capacity minus the weight of lifting hook, wire rope and all lifting appliances.

2. The rated lifting capacity shown in the table is the value when the weight is hoisted slowly and stably on a level and hard ground without traveling.

3. The rated load is within 75% of the tipover load.

LUFFING JIB LOAD CHARTS

S Rated Load Chart of SCC2500C Luffing Jib (without main hook, counterweight 85.2+5.8t)

		61.5												Unit: (t)		
Boom length (m)	Jib length (m)	52	55	58	61	63	66	69	72	75	78	81	84	87	90	93
Boom length (m)	Jib length (m)	52	55	58	61	63	66	69	72	75	78	81	84	87	90	93
Radius (m)	Boom angle (°)	88	83	78	73	68	63	58	53	48	43	38	33	28	23	18
14	14															
16	16															
18	18															
20	20	17.3				12.0								9.3		
22	22	16.0				11.3								8.9		
24	24	14.8				10.3								8.0		
26	26	13.8				9.7								7.7		
28	28	12.9				8.9								6.9		
30	30	12.0	14.5			10.2	12.3							6.6	7.9	
32	32	11.2	13.5			9.6	11.5							6.3	7.6	
34	34	10.6	12.6			8.9	10.7							5.5	6.8	
36	36	9.9	11.8			8.4	10.1							5.3	6.5	
38	38	9.4	11.0	12.9		7.8	9.4	10.8						4.6	6.2	
40	40	8.9	10.4	12.1		7.3	8.7	10.3	8.4					4.3	5.4	6.6
42	42	8.4	9.8	11.4		6.8	8.3	9.7	8.0					3.7	5.2	6.3
44	44	8.0	9.3	10.8		6.5	7.7	9.1	7.3					3.5	4.5	5.6
46	46	7.5	8.8	10.2		6.1	7.3	8.6	6.9					3.3	4.3	5.3
48	48	7.1	8.3	9.7	8.1	5.7	6.7	8.2	6.6					2.7	3.6	5.1
50	50	6.8	7.9	9.1	7.7	5.4	6.4	7.5	6.9	6.2				2.5	3.4	4.4
52	52	6.5	7.4	8.6	7.2	4.4	5.9	7.1	6.6	5.9				2.8	4.2	5.2
54	54	6.2	7.1	8.2	6.8	4.3	5.6	6.6	6.1	5.3				2.6	3.5	4.5
56	56	6.7	7.8	6.5	4.9	5.3	6.3	5.8	4.9	5.0				2.4	3.3	4.3
58	58	6.4	7.3	6.2	4.5	4.3	5.8	5.3	4.5	4.6				2.7	3.6	
60	60	6.2	7.0	5.9	4.1	4.1	5.5	5.1	4.2	4.2				2.5	3.4	4.3
62	62		6.7	5.6	3.9	4.4	4.8	4.0	3.5	4.0				3.2	4.1	
64	64		6.4	5.3	3.7	4.3	4.4	3.6	3.5	3.6				2.6	3.5	
66	66			5.0	3.4	4.1	3.3		3.3	3.3				2.4	3.3	
68	68			4.7	3.2	3.6	3.0		2.9					2.7		
70	70			4.4	3.0		2.8		2.7					2.5		
72	72				2.7											
74	74															

Notes: The load values of 25% orange parts in the thick frames depend on the boom strength.

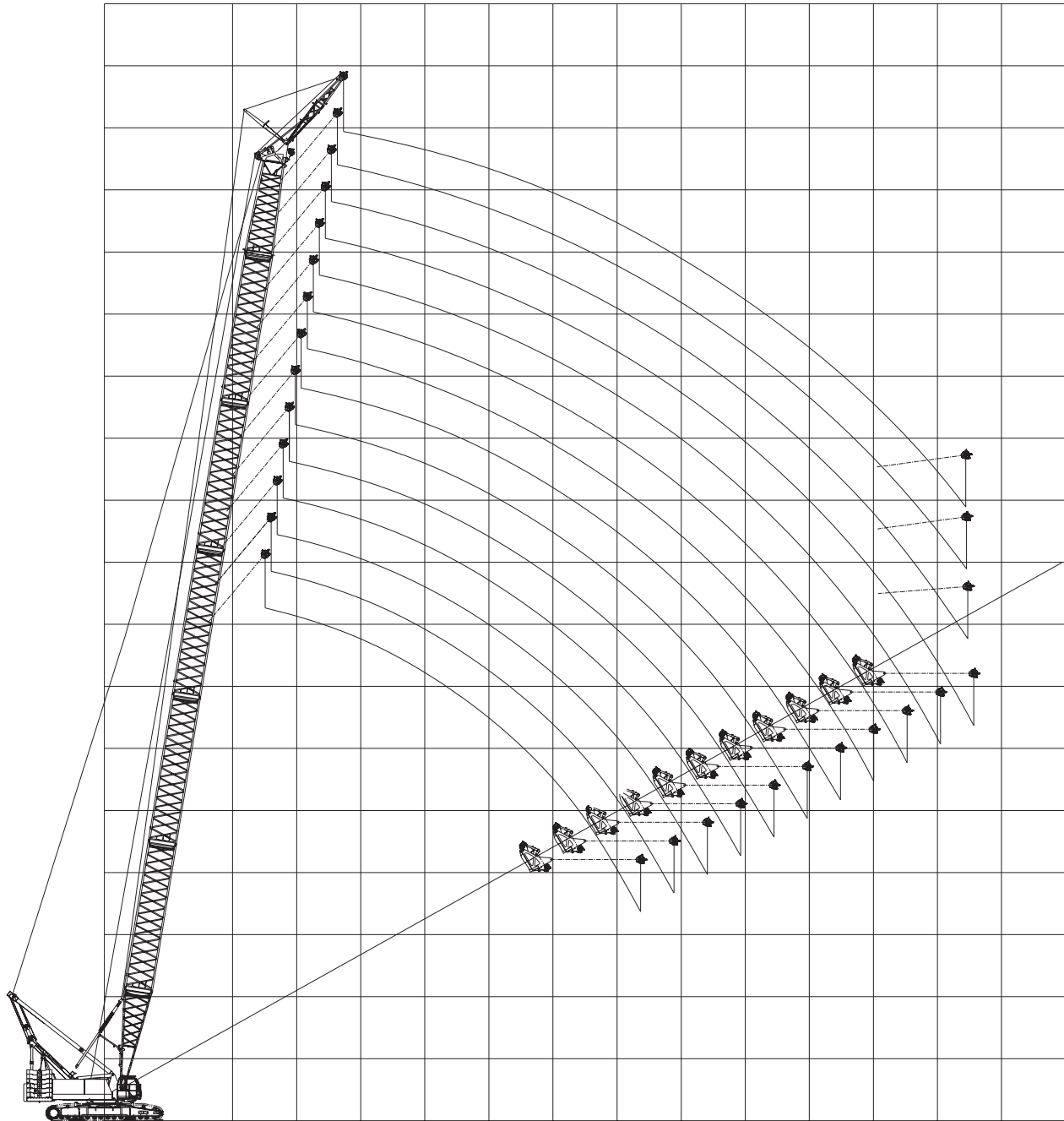
Description: 1. The actual lifting capacity is the rated lifting capacity minus the weight of lifting hook, wire rope and all lifting appliances.

2. The rated lifting capacity shown in the table is the value when the weight is hoisted slowly and stably on a level and hard ground without traveling.

3. The rated load is within 75% of the tipover load.



SF_H OPERATING CONDITION OF HEAVY-DUTY FIXED SHORT JIB



LOAD CHARTS OF SF_H OPERATING CONDITION

Load Chart of SCC2500C Heavy-duty Fixed Short Jib (without main hook)

Unit: (t)

Range (m)	Boom length (m)									Range (m)
	19.5		37.5	40.5	43.5	46.5	49.5	52.5	55.5	
	Main hook (Without auxiliary hook)	Auxiliary hook (without main hook)								
5	247.1									
6	221.8									
7	198.8									
8	172.8									
8	150.1									
10	133.5	10.3/80	80.0	78.5	77.5	76.5				10
12	103.0	77.9	77.9	75.6	74.7	72.9	71.0	69.1	67.4	12
14	82.0	72.7	66.5	65.0	63.1	61.5	60.0	58.5	57.0	14
16	67.7	66.5	58.5	57.1	55.7	54.5	53.2	51.9	50.6	16
18	56.9	58.5	51.5	50.3	49.1	48.0	46.9	45.8	44.7	18
20	18.5/52.2	51.5	45.4	44.7	43.6	42.7	41.7	40.7	39.8	20
22		45.4	40.0	39.5	39.1	38.4	37.5	36.5	35.6	22
24		40.0	35.5	35.2	34.8	34.5	33.7	32.9	32.1	24
26		35.5	31.9	31.5	31.1	30.8	30.5	29.8	29.1	26
28			28.7	28.4	28.0	27.8	27.4	27.1	26.5	28
30			26.0	25.7	25.4	25.1	24.7	24.5	24.0	30
32			23.7	23.4	23.0	22.8	22.5	22.1	21.7	32
34			21.6	21.4	21.0	20.8	20.5	20.1	19.7	34
36			19.8	19.5	19.2	19.0	18.6	18.4	18.0	36
38			18.2	17.9	17.5	17.4	17.1	16.7	16.4	38
40			16.7	16.5	16.1	16.0	15.6	15.3	15.0	40
42			15.4	15.1	14.8	14.6	14.4	14.0	13.6	42
44				13.9	13.6	13.5	13.2	12.8	12.5	44
46					12.5	12.4	12.1	11.8	11.5	46
48						11.4	11.1	10.8	10.5	48
50							10.2	9.9	9.5	50
52							9.3	9.0	8.7	52
54								8.3	7.9	54
56									7.2	56
Counterweight(t)	85.2	85.2	85.2	85.2	85.2	85.2	85.2	85.2	85.2	Counterweight(t)

Notes: The 40% orange and italic parts in the table indicate the rated loads with additional counterweight, the values of 25% orange and italic parts depend on the boom strength.

- escription: 1. The rated lifting capacity shown in the table is the value when the weight is hoisted slowly.
- 2. The rated lifting capacity shown in the table is the value when the weight is hoisted slowly and stably on a level and hard ground without traveling.
- 3. The rated load is within 75% of the tipover load.
- 4. The 19.5m operating condition is applicable to the hoisting of shield machine for metro construction or similar products; and the shield machine can be turned over without requiring auxiliary crane.

LOAD CHARTS OF SF_H OPERATING CONDITION

Load Chart of SCC2500C Heavy-duty Fixed Short Jib (without main hook)

Unit: (t)

Radius (m)	Boom length (m)							Radius (m)
	58.5	61.5	64.5	67.5	70.5	73.5	76.5	
12	64.9							12
14	55.3	54.0	52.8	51.6	49.5			14
16	49.5	48.4	47.2	46.0	44.9	43.8	42.0	16
18	43.7	42.6	41.6	40.6	39.7	38.7	37.7	18
20	38.9	38.0	37.1	36.1	35.3	34.5	33.5	20
22	34.9	34.0	33.2	32.4	31.5	30.7	30.0	22
24	31.5	30.6	29.8	29.1	28.4	27.6	26.9	24
26	28.5	27.7	27.0	26.2	25.5	24.9	24.2	26
28	25.8	25.1	24.5	23.7	23.2	22.5	21.8	28
30	23.5	22.8	22.2	21.5	21.0	20.4	19.7	30
32	21.5	20.8	20.3	19.6	19.1	18.5	17.8	32
34	19.5	19.1	18.5	17.8	17.4	16.7	16.2	34
36	17.7	17.4	16.8	16.3	15.8	15.2	14.6	36
38	16.2	15.8	15.5	14.8	14.4	13.8	13.3	38
40	14.7	14.4	14.1	13.5	13.1	12.5	12.0	40
42	13.5	13.1	12.8	12.4	11.9	11.4	10.8	42
44	12.3	11.9	11.6	11.3	10.8	10.3	9.8	44
46	11.2	10.9	10.5	10.2	9.8	9.3	8.8	46
48	10.3	9.9	9.6	9.3	8.9	8.4	7.9	48
50	9.4	9.0	8.7	8.4	8.1	7.5	7.1	50
52	8.5	8.2	7.9	7.5	7.3	6.7	6.3	52
54	7.7	7.5	7.1	6.7	6.5	6.0	5.5	54
56	7.0	6.7	6.4	6.1	5.8	5.4	4.8	56
58	6.4	6.0	5.7	5.4	5.2	4.6	4.2	58
60	5.7	5.4	5.1	4.8	4.5	4.1	3.6	60
62		4.8	4.5	4.2	4.0	3.5	3.0	62
64			4.0	3.6	3.5	2.9	2.5	64
66				3.1	2.9	2.5	2.0	66
68				2.6	2.4			68
Counterweight(t)	85.2	85.2	85.2	85.2	85.2	85.2	85.2	Counterweight(t)

Notes: The 40% orange and italic parts in the table indicate the rated loads with additional counterweight, the values of 25% orange and italic parts depend on the boom strength.

escription: 1. The rated lifting capacity shown in the table is the value when the weight is hoisted slowly.

2. The rated lifting capacity shown in the table is the value when the weight is hoisted slowly and stably on a level and hard ground without traveling.

3. The rated load is within 75% of the tipover load.

4. The 19.5m operating condition is applicable to the hoisting of shield machine for metro construction or similar products; and the shield machine can be turned over without requiring auxiliary crane.



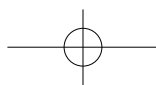
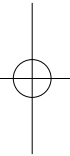
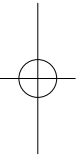
Notes

Area with horizontal dashed lines for notes.



Notes

Area with horizontal dashed lines for notes.





Quality Changes the World

SANY GROUP CO., LTD.

Address: SANY Industrial Park, Economic and Technological
Development Zone, Changsha, Hunan, China

Service Hotline: +0086-4006-098-318

E-mail: crd@sany.com.cn

For more information, please visit: www.sanygroup.com

B05S2ENAM1-SCC2500C

