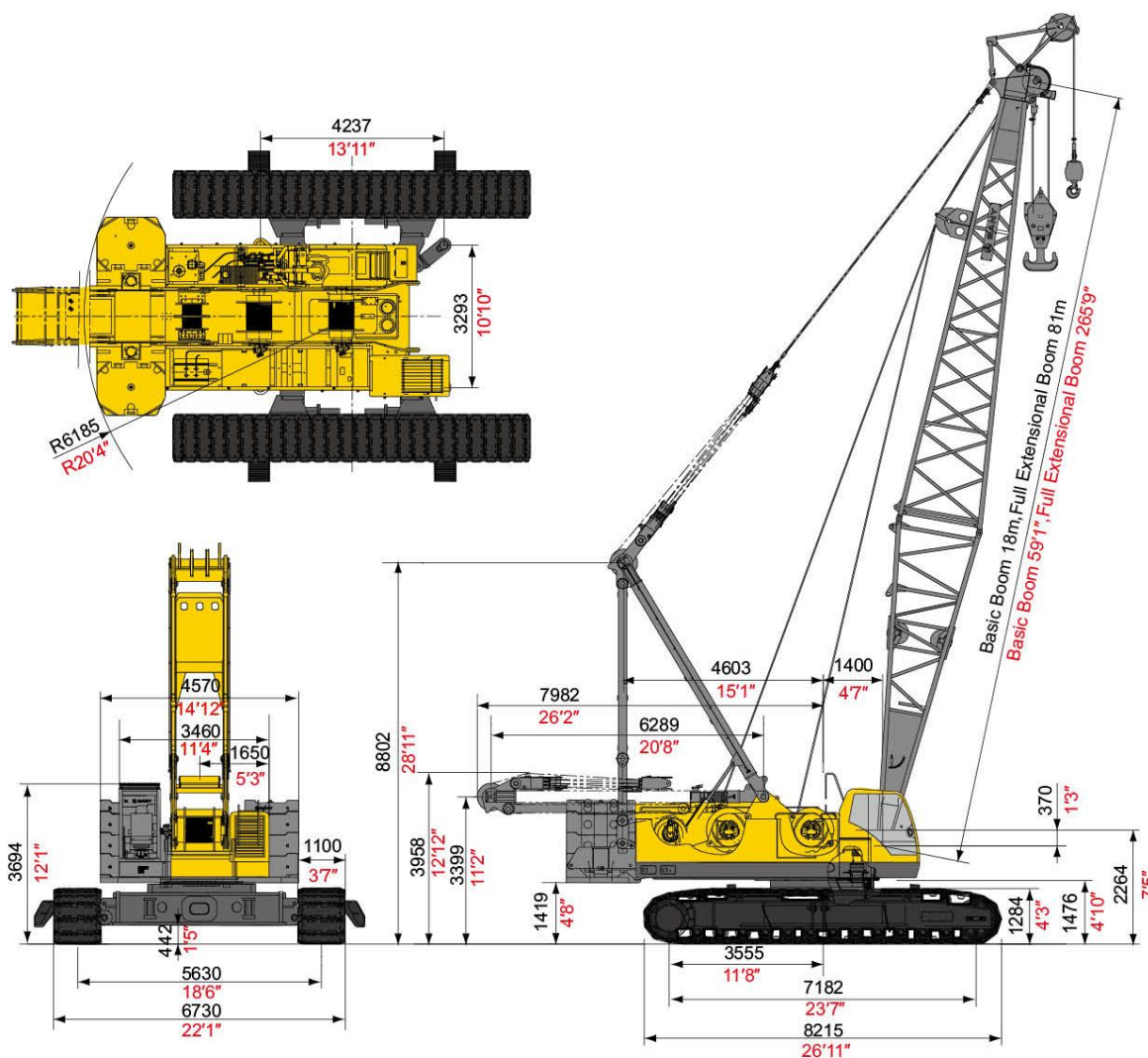


Outline Dimensions



SCC1500C Hydraulic Crawler Crane



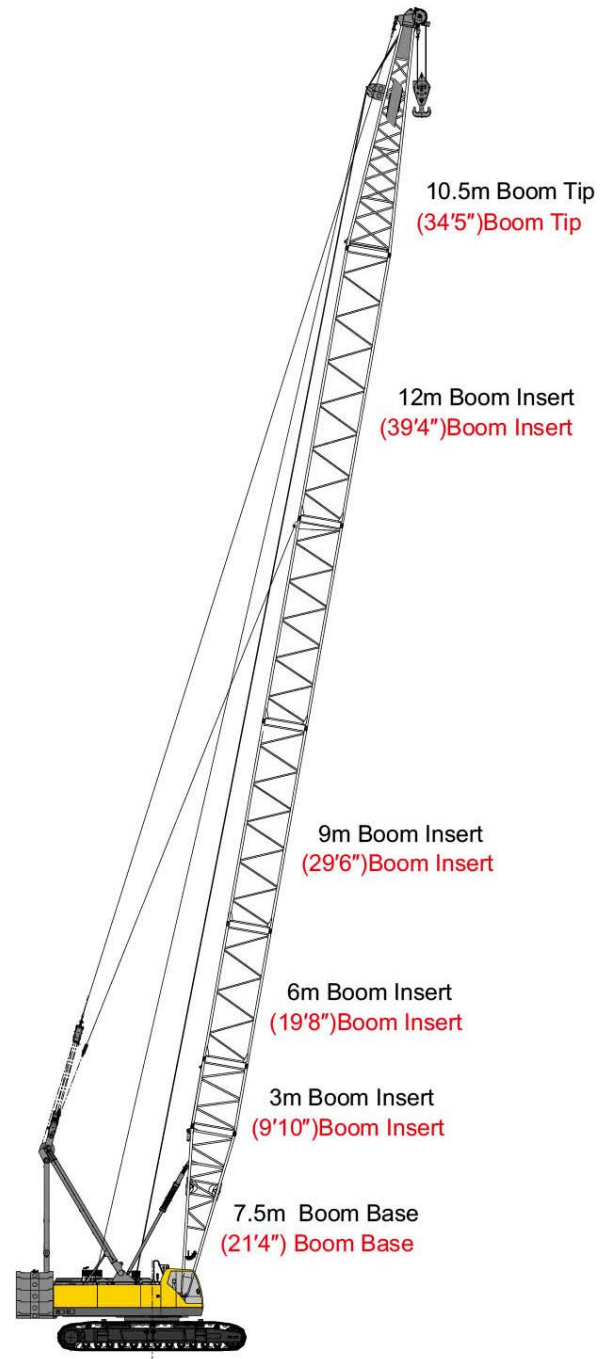
Outline Dimensions of SCC1500C Hydraulic Crawler Crane

Performance Data

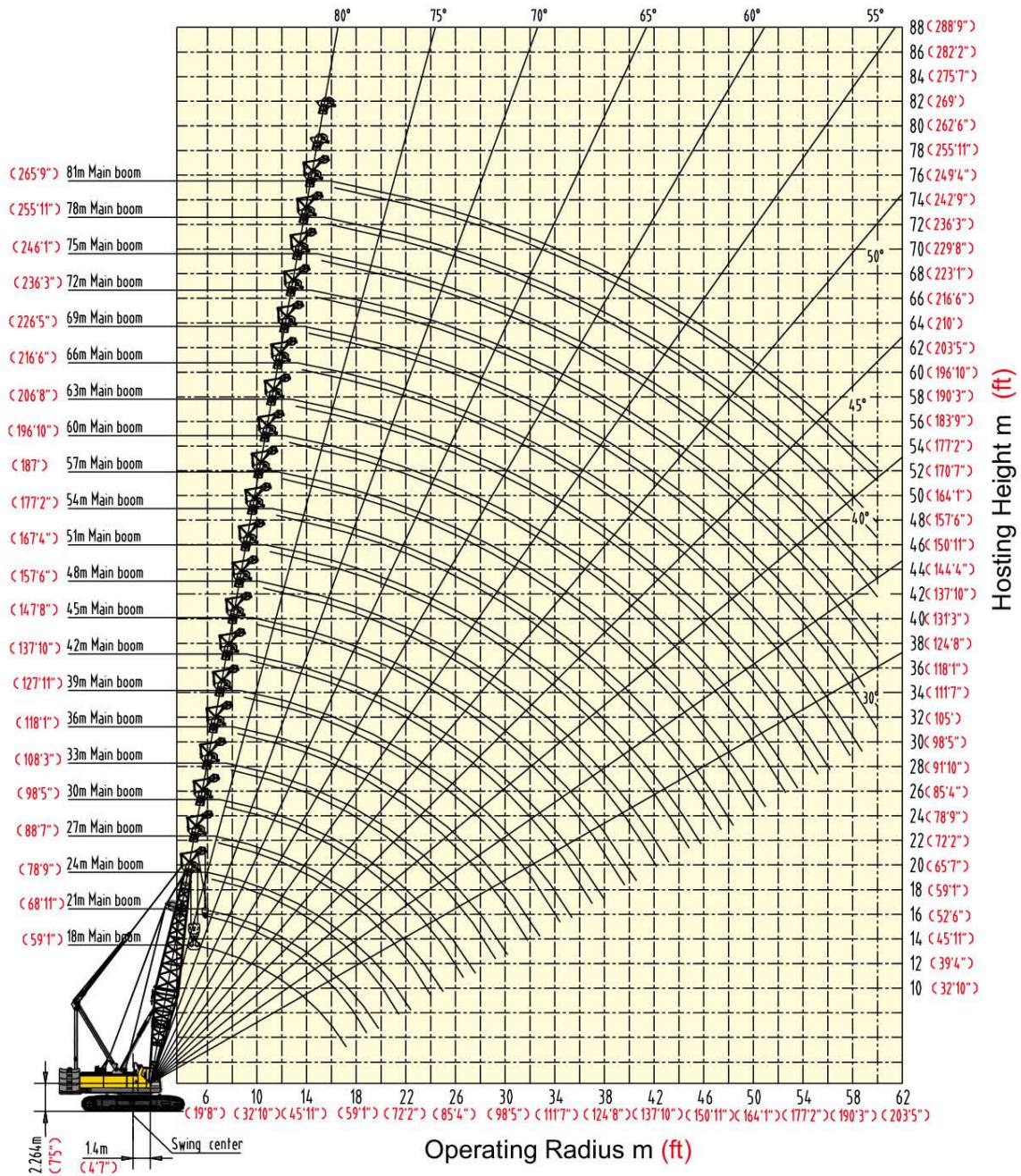
Main Performance Data of SCC1500C Hydraulic Crawler Crane			
Performance Index		Unit	Data
H Operating Condition	Max. Rated Load	t (Ust)	155 (170.9)
	Boom Length	m (ft)	18 ~ 81 (59' 1" ~ 265' 9")
	Boom Luffing Angle		30° ~ 80°
FJ Operating Condition	Full Extensional Boom+ Full Extensional Jib	m (ft)	(69 + 31) / (75 + 13) (226' 5" ~ 101' 8")/ (246' 1" ~ 42' 8")
	Jib Offset Angle		15° , 30°
Working Speed	Wire Speed of Main and Aux. Winch(Outermost Layer)	m/min (fpm)	0 ~ 125 (0~410)
	Wire Speed of Luffing Winch (Outermost Layer)	m/min (fpm)	(0 ~ 24) × 2 (0~78.7) × 2
	Slewing Speed	rpm	0 ~ 2.0
	Traveling Speed	km/h (mph)	0 ~ 1.2/0 ~ 0.6 (two speeds) (0 ~ 0.75 /0 ~ 0.37) (two speeds)
	Gradeability		30%
Engine	Output Power	kW (hp)	242 (324.5)
	Rated Rotational Speed	rpm	2100
Transport Data	Max. Transport Weight of Single Part	kg (lb)	50,000 110,230
	Transport Dimensions (Length × Width × Height)	mm (ft)	10230 × 3470 × 3500 (33' 7" × 11' 5" × 11' 6")
	Average Ground Bearing Pressure	MPa (psi)	0.093 (13.5)

H Operating Condition/Combination of Boom

Boom Length (m)	Boom Insert			
	3m (9'10")	6m (19'8")	9m (29'6")	12m (39'4")
18(59'1")	-	-	-	-
21(68'11")	1	-	-	-
24(78'9")	-	1	-	-
27(88'7")	1	1	-	-
30(98'5")	1	-	1	-
	-	2	-	-
33(108'3")	1	2	-	-
	-	1	1	-
36(118'1")	1	1	1	-
39(127'11")	1	1	-	1
	1	-	2	-
42(137'10")	-	2	1	-
	1	2	1	-
45(147'8")	1	-	1	1
	-	1	2	-
48(157'6")	1	1	1	1
51(167'4")	1	1	-	2
	1	-	2	1
54(177'2")	-	2	1	1
	1	2	1	1
57(187')	1	-	1	2
	-	1	1	2
60(196'10")	1	1	1	2
63(206'8")	1	-	2	2
	1	2	2	1
66(216'6")	1	2	1	2
69(226'5")	1	1	2	2
	1	3	2	1
72(236'3")	-	2	2	2
	1	3	1	2
75(246'1")	1	2	2	2
78(255'11")	-	3	2	2
81(265'9")	1	3	2	2



Operating Range Diagram of H Operating Condition



Hoisting Height and Operating Range Diagram

Load Charts of H Operating Condition

Main Boom Load Charts 1/5								kg(lb)×1000
Radius m (ft)	Length m (ft)	18	21	24	27	30	33	36
		(59'1")	(68'11")	(78'9")	(88'7")	(98'5")	(108'3")	(118'1")
5 (16'5")	155/4.94m (341.7/16'2")	135.3/5.46m (298.3/17'11")						
6 (19'8")	144.0 (317.5)	129.8 (286.2)	120.3/5.95m (265.2/19'6")	106.1/6.5m (233.9/21'4")				
7 (22'12")	124.5 (274.5)	118.2 (260.6)	107.8 (237.7)	101.8 (224.4)	95.7 (211)	85.8/7.54m (189.2/24'9")		
8 (26'3")	99.7 (219.8)	99.6 (219.6)	99.4 (219.1)	99.2 (218.7)	90.1 (198.6)	83.9 (185)	77.9/8.07m (171.7/26'6")	
9 (29'6")	83.0 (183)	82.8 (182.5)	82.7 (182.3)	82.4 (181.7)	82.3 (181.4)	82.0 (180.8)	74.7 (164.7)	
10 (32'10")	70.9 (156.3)	70.8 (156.1)	70.6 (155.6)	70.4 (155.2)	70.2 (154.8)	70.0 (154.3)	69.8 (153.9)	
11 (36'1")	61.9 (136.5)	61.7 (136)	61.5 (135.6)	61.3 (135.1)	61.1 (134.7)	60.9 (134.3)	60.7 (133.8)	
12 (39'4")	54.8 (120.8)	54.6 (120.4)	54.5 (120.2)	54.2 (119.5)	54.1 (119.3)	53.8 (118.6)	53.6 (118.2)	
13 (42'8")	49.1 (108.2)	48.9 (107.8)	48.8 (107.6)	48.5 (106.9)	48.4 (106.7)	48.1 (106)	47.9 (105.6)	
14 (45'11")	44.5 (98.1)	44.3 (97.7)	44.1 (97.2)	43.8 (96.6)	43.7 (96.3)	43.4 (95.7)	43.3 (95.5)	
15 (49'3")	40.6 (89.5)	40.4 (89.1)	40.2 (88.6)	40.0 (88.2)	39.8 (87.7)	39.5 (87.1)	39.4 (86.9)	
16 (52'6")	37.3 (82.2)	37.1 (81.8)	36.9 (81.3)	36.7 (80.9)	36.5 (80.5)	36.2 (79.8)	36.1 (79.6)	
17 (55'9")	34/17.19m (75/56'5")	34.3 (75.6)	34.1 (75.2)	33.8 (74.5)	33.7 (74.3)	33.4 (73.6)	33.2 (73.2)	
18 (59'1")		31.8 (70.1)	31.7 (69.9)	31.4 (69.2)	31.2 (68.8)	31.0 (68.3)	30.8 (67.9)	
19 (62'4")		29.7 (65.5)	29.5 (65)	29.2 (64.4)	29.1 (64.2)	28.8 (63.5)	28.6 (63.1)	
20 (65'7")		28.1/19.8m (61.9/64'12")	27.6 (60.8)	27.3 (60.2)	27.2 (60)	26.9 (59.3)	26.7 (58.9)	
21 (68'11")			25.9 (57.1)	25.6 (56.4)	25.5 (56.2)	25.2 (55.6)	25.0 (55.1)	
22 (72'2")			23.9/22.4m (52.7/73'6")	24.1 (53.1)	24.0 (52.9)	23.7 (52.2)	23.5 (51.8)	
23 (75'6")				22.8 (50.3)	22.6 (49.8)	22.3 (49.2)	22.2 (48.9)	
24 (78'9")				21.5 (47.4)	21.4 (47.2)	21.1 (46.5)	20.9 (46.1)	
26 (85'4")				20.4/25m (45/82'0")	19.2 (42.3)	18.9 (41.7)	18.8 (41.4)	
28 (91'10")					17.8/27.6m (39.2/90'7")	17.1 (37.7)	17.0 (37.5)	
30 (98'5")						15.5/30.2m (34.2/99'1")	15.4 (34)	
32 (104'12")							14.1 (31.1)	
34 (111'7")							13.6/32.8m (30/107'7")	
Counterweight kg(lb)×1000	53 (116.8)	53 (116.8)	53 (116.8)	53 (116.8)	53 (116.8)	53 (116.8)	53 (116.8)	53 (116.8)
Multiplying - factor	14	12	10	9	8	7	6	

Load Charts of H Operating Condition

Main Boom Load Charts 2/5									kg(lb)×1000
Length m(ft)	39	42	45	48	51				
Radius m (ft)	(127'11")	(137'10")	(147'8")	(157'6")	(167'4")				
8 (26'3")	70.8/8.58m (156.1/28'2")								
9 (29'6")	68.7 (151.5)	64.5/9.1m (142.2/29'10")	58.7/9.63m (129.4/31'7")	58.7/9.63m (129.4/31'7")					
10 (32'10")	64.8 (142.9)	62.2 (137.1)	57.9 (127.6)	57.9 (127.6)	54/10.1m (119/33'2")	54/10.1m (119/33'2")	49.3/10.6m (108.7/34'9")	49.3/10.6m (108.7/34'9")	
11 (36'1")	61.1 (134.7)	57.8 (127.4)	56.7 (125)	56.7 (125)	52.5 (115.7)	52.5 (115.7)	48.3 (106.5)	48.3 (106.5)	
12 (39'4")	53.4 (117.7)	53.3 (117.5)	53.1 (117.1)	55.5 (122.4)	50.9 (112.2)	50.9 (112.2)	47.2 (104.1)	47.2 (104.1)	
13 (42'8")	47.8 (105.4)	47.6 (104.9)	47.4 (104.5)	54.3 (119.7)	47.2 (104.1)	49.5 (109.1)	45.5 (100.3)	45.5 (100.3)	
14 (45'11")	43.1 (95)	42.9 (94.6)	42.7 (94.1)	49.0 (108)	42.5 (93.7)	48.1 (106)	42.3 (93.3)	43.8 (96.6)	
15 (49'3")	39.2 (86.4)	39.0 (86)	38.8 (85.5)	44.6 (98.3)	38.6 (85.1)	44.3 (97.7)	38.4 (84.7)	42.1 (92.8)	
16 (52'6")	35.9 (79.1)	35.7 (78.7)	35.5 (78.3)	40.8 (89.9)	35.3 (77.8)	40.6 (89.5)	35.1 (77.4)	40.4 (89.1)	
17 (55'9")	33.0 (72.8)	32.9 (72.5)	32.7 (72.1)	37.6 (82.9)	32.5 (71.6)	37.4 (82.5)	32.3 (71.2)	37.2 (82)	
18 (59'1")	30.6 (67.5)	30.4 (67)	30.2 (66.6)	34.8 (76.7)	30.0 (66.1)	34.6 (76.3)	29.8 (65.7)	34.4 (75.8)	
19 (62'4")	28.4 (62.6)	28.3 (62.4)	28.1 (61.9)	32.4 (71.4)	27.8 (61.3)	32.1 (70.8)	27.6 (60.8)	31.9 (70.3)	
20 (65'7")	26.5 (58.4)	26.4 (58.2)	26.2 (57.8)	30.2 (66.6)	25.9 (57.1)	30.0 (66.1)	25.7 (56.7)	29.8 (65.7)	
21 (68'11")	24.8 (54.7)	24.7 (54.5)	24.5 (54)	28.3 (62.4)	24.2 (53.4)	28.1 (31)	24.0 (52.9)	27.9 (61.5)	
22 (72'2")	23.3 (51.4)	23.2 (51.1)	23.0 (50.7)	26.6 (58.6)	22.7 (50)	26.3 (29)	22.5 (49.6)	26.1 (57.5)	
23 (75'6")	22.0 (48.5)	21.8 (48.1)	21.6 (47.6)	25.1 (55.3)	21.3 (47)	24.8 (54.7)	21.1 (46.5)	24.6 (54.2)	
24 (78'9")	20.7 (45.6)	20.6 (45.4)	20.4 (45)	23.7 (52.2)	20.1 (44.3)	23.4 (51.6)	19.9 (43.9)	23.2 (51.1)	
26 (85'4")	18.6 (41)	18.4 (40.6)	18.2 (40.1)	21.2 (46.7)	18.0 (39.7)	21.0 (46.3)	17.8 (39.2)	20.8 (45.9)	
28 (91'10")	16.8 (37)	16.6 (36.6)	16.4 (36.2)	19.2 (42.3)	16.1 (35.5)	18.9 (41.7)	15.9 (35.1)	18.7 (41.2)	
30 (98'5")	15.2 (33.5)	15.1 (33.3)	14.9 (32.8)	17.4 (38.4)	14.6 (32.2)	17.2 (37.9)	14.4 (31.7)	17.0 (37.5)	
32 (104'12")	13.9 (30.6)	13.7 (30.2)	13.5 (29.8)	15.9 (35.1)	13.3 (29.3)	15.7 (34.6)	13.1 (28.9)	15.5 (34.2)	
34 (111'7")	12.7 (28)	12.6 (27.8)	12.4 (27.3)	14.6 (32.2)	12.1 (26.7)	14.3 (31.5)	11.9 (26.2)	14.1 (31.1)	
36 (118'1")	12/35.38m (26.5/116'1")	11.6 (25.6)	11.3 (24.9)	13.4 (29.5)	11.1 (24.5)	13.2 (29.1)	10.9 (24)	13.0 (28.7)	
38 (124'8")		10.7/37.95m (23.6/124'6")	10.4 (22.9)	12.4 (27.3)	10.2 (22.5)	12.2 (26.9)	10.0 (22)	12.0 (26.5)	
40 (131'3")			9.4/40.58m (20.7/133'2")	11.3/40.58m (24.9/133'2")	9.4 (20.7)	11.3 (24.9)	9.2 (20.3)	11.0 (24.3)	
42 (137'10")					8.7 (19.2)	10.4 (22.9)	8.5 (18.7)	10.2 (22.5)	
44 (144'4")					8.3/43.2m (18.3/141'9")	10.0/43.2m (22/141'9")	7.3/45.75m (16.1/150'1")	8.9/45.75m (19.6/150'1")	
Counterweight kg (lb)×1000	53 (116.8)	53 (116.8)	53 (116.8)	53+12 (116.8+26.5)	53 (116.8)	53+12 (116.8+26.5)	53 (116.8)	53+12 (116.8+26.5)	
Multiplying - factor	6	5	5	5	5	5	4	4	

Load Charts of H Operating Condition

Main Boom Load Charts 3/5									kg(lb)×1000
Length m(ft) Radius m(ft)	54 (177'2")		57 (187'0")		60 (196'10")		63 (206'8")		
	11 (36'1")	45.5/11.2m (100.3/36'9")	45.5/11.2m (100.3/36'9")	41.8/11.7m (92.2/38'5")	41.8/11.7m (92.2/38'5")				
12 (39'4")	44.2 (97.4)	44.2 (97.4)	41.4 (91.3)	41.4 (91.3)	39.2/12.2m (86.4/40'0")	39.2/12.2m (86.4/40'0")			
13 (42'8")	43.0 (94.8)	43.0 (94.8)	40.1 (88.4)	40.1 (88.4)	37.9 (83.6)	37.9 (83.6)	35/12.75m (77.2/41'10")	35/12.75m (77.2/41'10")	
14 (45'11")	42.1 (92.8)	42.5 (93.7)	38.7 (85.3)	38.7 (85.3)	36.7 (80.9)	36.7 (80.9)	33.6 (74.1)	33.6 (74.1)	
15 (49'3")	38.1 (84)	40.6 (89.5)	38.0 (83.8)	37.9 (83.6)	35.0 (77.2)	35.0 (77.2)	32.2 (71)	32.2 (71)	
16 (52'6")	34.8 (76.7)	38.7 (85.3)	34.7 (76.5)	36.6 (80.7)	33.3 (73.4)	33.3 (73.4)	30.8 (67.9)	30.8 (67.9)	
17 (55'9")	32.0 (70.5)	36.9 (81.3)	31.8 (70.1)	35.2 (77.6)	31.6 (69.7)	32.2 (71)	29.4 (64.8)	29.4 (64.8)	
18 (59'1")	29.5 (65)	34.1 (75.2)	29.3 (64.6)	33.9 (74.7)	29.2 (64.4)	31.2 (68.8)	28.0 (61.7)	28.0 (61.7)	
19 (62'4")	27.4 (60.4)	31.7 (69.9)	27.2 (60)	31.5 (69.4)	27.0 (59.5)	30.1 (66.4)	26.8 (59.1)	27.5 (60.6)	
20 (65'7")	25.5 (56.2)	29.5 (65)	25.3 (55.8)	29.3 (64.6)	25.1 (55.3)	29.1 (64.2)	24.9 (54.9)	27.0 (59.5)	
21 (68'11")	23.8 (52.5)	27.6 (60.8)	23.6 (52)	27.4 (60.4)	23.4 (51.6)	27.2 (60)	23.2 (51.1)	26.1 (57.5)	
22 (72'2")	22.2 (48.9)	25.9 (57.1)	22.1 (48.7)	25.7 (56.7)	21.9 (48.3)	25.5 (56.2)	21.6 (47.6)	25.3 (55.8)	
23 (75'6")	20.9 (46.1)	24.3 (53.6)	20.7 (45.6)	24.1 (53.1)	20.5 (45.2)	23.9 (52.7)	20.3 (44.8)	23.7 (52.2)	
24 (78'9")	19.6 (43.2)	22.9 (50.5)	19.5 (43)	22.7 (50)	19.3 (42.5)	22.5 (49.6)	19.0 (41.9)	22.3 (49.2)	
26 (85'4")	17.5 (38.6)	20.5 (45.2)	17.3 (38.1)	20.3 (44.8)	17.1 (37.7)	20.1 (44.3)	16.9 (37.3)	19.9 (43.9)	
28 (91'10")	15.7 (34.6)	18.4 (40.6)	15.5 (34.2)	18.3 (40.3)	15.3 (33.7)	18.0 (39.7)	15.1 (33.3)	17.8 (39.2)	
30 (98'5")	14.1 (31.1)	16.7 (36.8)	13.9 (30.6)	16.5 (36.4)	13.7 (30.2)	16.3 (35.9)	13.5 (29.8)	16.1 (35.5)	
32 (104'12")	12.8 (28.2)	15.2 (33.5)	12.6 (27.8)	15.0 (33.1)	12.4 (27.3)	14.8 (32.6)	12.2 (26.9)	14.6 (32.2)	
34 (111'7")	11.6 (25.6)	13.9 (30.6)	11.4 (25.1)	13.7 (30.2)	11.2 (24.7)	13.5 (29.8)	11.0 (24.3)	13.3 (29.3)	
36 (118'1")	10.6 (23.4)	12.7 (28)	10.4 (22.9)	12.5 (27.6)	10.2 (22.5)	12.3 (27.1)	10.0 (22)	12.1 (26.7)	
38 (124'8")	9.7 (21.4)	11.7 (25.8)	9.5 (20.9)	11.5 (25.4)	9.3 (20.5)	11.3 (24.9)	9.1 (20.1)	11.1 (24.5)	
40 (131'3")	8.9 (19.6)	10.8 (23.8)	8.7 (19.2)	10.6 (23.4)	8.5 (18.7)	10.4 (22.9)	8.3 (18.3)	10.2 (22.5)	
42 (137'10")	8.2 (18.1)	9.9 (21.8)	8.0 (17.6)	9.8 (21.6)	7.8 (17.2)	9.6 (21.2)	7.6 (16.8)	9.3 (20.5)	
44 (144'4")	7.5 (16.5)	9.2 (20.3)	7.3 (16.1)	9.0 (19.8)	7.1 (15.7)	8.8 (19.4)	6.8 (15)	8.6 (19)	
46 (150'11")	6.9 (15.2)	8.5 (18.7)	6.7 (14.8)	8.3 (18.3)	6.5 (14.3)	8.1 (17.9)	6.2 (13.7)	7.9 (17.4)	
48 (157'6")	6.2/48.38m (13.7/158'9")	7.8/48.38m (17.2/158'9")	6.1 (13.4)	7.7 (17)	5.9 (13)	7.5 (16.5)	5.6 (12.3)	7.3 (16.1)	
50 (164'0")			5.3/50.97m (11.7/167'3")	6.9/50.97m (15.2/167'3")	5.3 (11.7)	6.9 (15.2)	5.1 (11.2)	6.7 (14.8)	
52 (170'7")					4.8 (10.6)	6.4 (14.1)	4.6 (10.1)	6.1 (13.4)	
54 (177'2")					4.5/53.57m (9.9/175'9")	6.0/53.57m (13.2/175'9")	4.1 (9)	5.6 (12.3)	
56 (183'9")							3.7/56.16m (8.2/184'3")	5.1/56.16m (11.2/184'3")	
Counterweight kg(lb)×1000	53 (116.8)	53+12 (116.8+26.5)	53 (116.8)	53+12 (116.8+26.5)	53 (116.8)	53+12 (116.8+26.5)	53 (116.8)	53+12 (116.8+26.5)	
Multiplying - factor	4	4	4	4	4	4	3	3	

Load Charts of H Operating Condition

Main Boom Load Charts 4/5									kg(lb)×1000
Length m(ft) Radius m(ft)	66 (216'6")		69 (226'5")		72 (236'3")		75 (246'1")		
	13 (42'8")	31.5/13.2m (69.4/43'4")	31.5/13.2m (69.4/43'4")						
14 (45'11")	30.9 (68.1)	30.9 (68.1)	28.3/13.8m (62.4/45'3")	28.3/13.8m (62.4/45'3")	25.5/14.3m (56.2/46'11")	25.5/14.3m (56.2/46'11")			
15 (49'3")	29.8 (65.6)	29.8 (65.7)	27.3 (60.2)	27.3 (60.2)	24.9 (54.9)	24.9 (54.9)	22.7/14.8m (50/48'7")	22.7/14.8m (50/48'7")	
16 (52'6")	28.6 (63.1)	28.6 (63.1)	26.5 (58.4)	26.5 (58.4)	24.3 (53.6)	24.3 (53.6)	22.1 (48.7)	22.1 (48.7)	
17 (55'9")	27.5 (60.6)	27.5 (60.6)	25.6 (56.3)	25.6 (56.3)	23.6 (52)	23.6 (52)	21.6 (47.6)	21.6 (47.6)	
18 (59'1")	26.4 (58.2)	26.4 (58.2)	24.6 (54.2)	24.6 (54.2)	22.9 (50.4)	22.9 (50.5)	21.1 (46.5)	21.1 (46.5)	
19 (62'4")	25.2 (55.6)	25.2 (55.6)	23.7 (52.1)	23.7 (52.1)	22.1 (48.8)	22.1 (48.7)	20.6 (45.4)	20.6 (45.4)	
20 (65'7")	24.0 (52.9)	24.0 (52.9)	22.7 (50)	22.7 (50)	21.4 (47.2)	21.4 (47.2)	20.1 (44.3)	20.1 (44.3)	
21 (68'11")	22.9 (50.5)	23.5 (51.8)	21.8 (48)	21.8 (48)	20.7 (45.5)	20.7 (45.6)	19.6 (43.1)	19.6 (43.1)	
22 (72'2")	21.4 (47.2)	23.0 (50.7)	20.8 (45.9)	20.8 (45.9)	19.9 (43.9)	19.9 (43.9)	19.0 (41.9)	19.0 (41.9)	
23 (75'6")	20.0 (44.1)	22.5 (49.6)	19.8 (43.7)	20.3 (44.8)	19.2 (42.3)	19.2 (42.3)	18.5 (40.7)	18.5 (40.7)	
24 (78'9")	18.8 (41.4)	22.1 (48.7)	18.6 (41)	19.8 (43.7)	18.3 (40.3)	18.5 (40.8)	17.9 (39.5)	17.9 (39.5)	
26 (85'4")	16.6 (36.6)	19.6 (43.2)	16.4 (36.2)	18.6 (41)	16.2 (35.7)	17.8 (39.2)	16.0 (35.3)	17.0 (37.5)	
28 (91'10")	14.8 (32.6)	17.6 (38.8)	14.6 (32.2)	17.4 (38.4)	14.4 (31.7)	17.1 (37.7)	14.2 (31.3)	16.1 (35.5)	
30 (98'5")	13.3 (29.3)	15.8 (34.8)	13.1 (28.9)	15.6 (34.4)	12.8 (28.2)	15.4 (34)	12.6 (27.8)	15.2 (33.5)	
32 (104'12")	11.9 (26.2)	14.3 (31.5)	11.7 (25.8)	14.1 (31.1)	11.5 (25.4)	13.9 (30.6)	11.3 (24.9)	13.7 (30.2)	
34 (111'7")	10.8 (23.8)	13.0 (28.7)	10.6 (23.4)	12.8 (28.2)	10.3 (22.7)	12.6 (27.8)	10.1 (22.3)	12.3 (27.1)	
36 (118'1")	9.8 (21.6)	11.9 (26.2)	9.5 (20.9)	11.6 (25.6)	9.3 (20.5)	11.4 (25.1)	9.1 (20.1)	11.2 (24.7)	
38 (124'8")	8.9 (19.6)	10.8 (23.8)	8.6 (19)	10.6 (23.4)	8.4 (18.5)	10.4 (22.9)	8.1 (17.9)	10.1 (22.3)	
40 (131'3")	8.0 (17.6)	9.9 (21.8)	7.8 (17.2)	9.7 (21.4)	7.5 (16.5)	9.4 (20.7)	7.2 (15.9)	9.2 (20.3)	
42 (137'10")	7.3 (16.1)	9.1 (20.1)	7.0 (15.4)	8.9 (19.6)	6.7 (14.8)	8.6 (19)	6.4 (14.1)	8.4 (18.5)	
44 (144'4")	6.6 (14.6)	8.4 (18.5)	6.3 (13.9)	8.1 (17.9)	6.0 (13.2)	7.8 (17.2)	5.7 (12.6)	7.6 (16.8)	
46 (150'11")	5.9 (13)	7.7 (17)	5.6 (12.3)	7.4 (16.3)	5.4 (11.9)	7.1 (15.7)	5.1 (11.2)	6.8 (15)	
48 (157'6")	5.3 (11.7)	7.0 (15.4)	5.1 (11.2)	6.7 (14.8)	4.8 (10.6)	6.4 (14.1)	4.5 (9.9)	6.2 (13.7)	
50 (164'0")	4.8 (10.6)	6.4 (14.1)	4.5 (9.9)	6.1 (13.4)	4.2 (9.3)	5.8 (12.8)	4.0 (8.8)	5.6 (12.3)	
52 (170'7")	4.3 (9.5)	5.8 (12.8)	4.0 (8.8)	5.6 (12.3)	3.7 (8.2)	5.3 (11.7)	3.5 (7.7)	5.0 (11)	
54 (177'2")	3.8 (8.4)	5.3 (11.7)	3.6 (7.9)	5.0 (11)	3.3 (7.3)	4.8 (10.6)	3.0 (6.6)	4.5 (9.9)	
56 (183'9")	3.4 (7.5)	4.8 (10.6)	3.2 (7.1)	4.6 (10.1)	2.9 (6.4)	4.3 (9.5)	2.6 (5.7)	4.0 (8.8)	
58 (190'3")	2.9/58.8m (6.4/192'11")	4.2/58.8m (9.3/192'11")	2.8 (6.2)	4.1 (9)	2.5 (5.5)	3.8 (8.4)	2.2 (4.9)	3.6 (7.9)	
60 (196'10")			2.4 (5.3)	3.7 (8.2)	2.1 (4.6)	3.4 (7.5)	1.8 (4)	3.2 (7.1)	
Counterweight kg(lb)×1000	53 (116.8)	53+12 (116.8+26.5)	53 (116.8)	53+12 (116.8+26.5)	53 (116.8)	53+12 (116.8+26.5)	53 (116.8)	53+12 (116.8+26.5)	
Multiplying - factor	3	3	3	3	2	2	2	2	

Load Charts of H Operating Condition

Main Boom Load Charts 5/5					kg(lb)×1000		
Length m(ft)	78 (255'11")		81 (265'9")				
Radius m (ft)							
15 (49'3")	22/15.3m (48.5/50'2")	22/15.3m (48.5/50'2")					
16 (52'6")	21.4 (47.1)	21.4 (47.2)	20.6 (45.4)	20.6 (45.4)			
17 (55'9")	20.9 (46)	20.9 (46.1)	20.2 (44.5)	20.2 (44.5)			
18 (59'1")	20.4 (45)	20.4 (45)	19.7 (43.4)	19.7 (43.4)			
19 (62'4")	19.9 (43.9)	19.9 (43.9)	19.2 (42.3)	19.2 (42.3)			
20 (65'7")	19.4 (42.8)	19.4 (42.8)	18.7 (41.2)	18.7 (41.2)			
21 (68'11")	18.9 (41.6)	18.9 (41.7)	18.2 (40.1)	18.2 (40.1)			
22 (72'2")	18.4 (40.5)	18.4 (40.6)	17.7 (39)	17.7 (39)			
23 (75'6")	17.8 (39.3)	17.8 (39.2)	17.2 (37.9)	17.2 (37.9)			
24 (78'9")	17.3 (38.1)	17.3 (38.1)	16.7 (36.8)	16.7 (36.8)			
26 (85'4")	15.7 (34.6)	16.5 (36.4)	15.5 (34.2)	16.0 (35.3)			
28 (91'10")	13.9 (30.6)	15.6 (34.4)	13.7 (30.2)	15.4 (34)			
30 (98'5")	12.4 (27.3)	14.9 (32.8)	12.2 (26.9)	14.7 (32.4)			
32 (104'12")	11.0 (24.3)	13.4 (29.5)	10.8 (23.8)	13.2 (14.6)			
34 (111'7")	9.9 (21.8)	12.1 (26.7)	9.7 (21.4)	11.9 (26.2)			
36 (118'1")	8.8 (19.4)	10.9 (24)	8.6 (19)	10.7 (23.6)			
38 (124'8")	7.8 (17.2)	9.9 (21.8)	7.6 (16.8)	9.7 (21.4)			
40 (131'3")	6.9 (15.2)	9.0 (19.8)	6.7 (14.8)	8.7 (19.2)			
42 (137'10")	6.2 (13.7)	8.1 (17.9)	5.9 (13)	7.8 (17.2)			
44 (144'4")	5.4 (11.9)	7.3 (16.1)	5.2 (11.5)	7.0 (15.4)			
46 (150'11")	4.8 (10.6)	6.5 (14.3)	4.5 (9.9)	6.3 (13.9)			
48 (157'6")	4.2 (9.3)	5.9 (13)	4.0 (8.8)	5.6 (12.3)			
50 (164'0")	3.7 (8.2)	5.3 (11.7)	3.4 (7.5)	5.0 (11)			
52 (170'7")	3.2 (7.1)	4.7 (10.4)	2.9 (6.4)	4.5 (9.9)			
54 (177'2")	2.7 (6)	4.2 (9.3)	2.5 (5.5)	3.9 (8.6)			
56 (183'9")	2.3 (5.1)	3.7 (8.2)	2.0 (4.4)	3.5 (7.7)			
58 (190'3")	1.9 (4.2)	3.3 (7.3)	1.7 (3.7)	3.0 (6.6)			
60 (196'10")	1.5 (3.3)	2.9 (6.4)	1.3 (2.9)	2.6 (5.7)			
Counterweight kg(lb)×1000	53 (116.8)	53+12 (116.8+26.5)	53 (116.8)	53+12 (116.8+26.5)			
Multiplying - factor	2	2	2	2			